

KENT COUNTY REMONUMENTATION

LAND CORNER RECORDATION CERTIFICATE
Filing Requirement of Act 74, Mich. P.A. 1970

SECTION

For corners in

KENT COUNTY
(County)

Located in:

Corner Code #

1. Public Land Survey

T 10N R 12W

Tyrone Twp.

2. Property Controlling in Section

S T R

E-7

3. Miscellaneous Property in Sec.

S T R

4. Lot No. _____, Recorded Plat _____
5. Private Claims _____

I, Kirk Breitels, in a field survey on Feb. 15, 1999 do hereby state that under requirements of P.A. 74, Michigan P.A. of 1970, the corner points mentioned in lines 1 and 2 above were in conformance with regulations and rules therefore as required in the current manual of survey instructions of the United States Department of the Interior, Bureau of Land Management or by a decree of a Court of Law and /or that the corner points mentioned in lines 3, 4 and 5 above were in conformance with the rules of the Michigan Board of Land Surveyors or by a Decree of a Court of Law; established, re-established, monumented, recovered, found as expressed below:

NOTE: Not more than 2 corners, all in the same town and range, may be recorded on this certificate.

A. Description of original monument and accessories and/or subsequent restoration:

E-7 1837	GLO	Whitcomb	Set Post
1907-56	Williams & Works		Stone & Iron
	Kent Co. Wits		Stone & Iron
1983	LCRC #3688	Bueche	Set Kent County Monument in Mon. Box
1994	LCRC #7580	J. Glaza	Kent County Monument

The position of this corner was previously approved by the Kent County Remonumentation Peer Group, monumented by John C. Bueche on 12-5-83 and was recorded per LCRC #3688.

B. Description of corner evidence found and/or method applied in restoring or reestablishing corner:

E-7 Found Kent County Monument (Harrison) per wit. from above LCRC as set by John C. Bueche in place of the Large Spike in a 3/4" Iron he found in a Mon. Box. Spike and Iron check Kent Co. Wit. and Williams & Works information. LCRC #7580

PK Nail P. Pole	S45°W 70.48'	Nail & Remon. tag P. Pole	S45°W 70.45'
"X" cut in conc. curb return	N70°W 56.81'	"X" cut in concrete curb return	N70°W 56.81'
"X" cut in conc. curb return	N30°W 53.84'	"X" cut in concrete curb return	N30°W 53.84'
"X" cut in conc. curb return	N30°E 54.55'	"X" cut in concrete curb return	N30°E 54.55'
"X" cut in conc. curb return	N75°E 55.00'	"X" cut in concrete curb return	N75°E 55.00'
"X" cut in conc. curb return	S30°E 50.80'	"X" cut in concrete curb return	S30°E 50.80'

The selected location is accepted by me and is generally accepted by professional surveyors as the best available evidence of the position of the original corner.

C. Description of monument for corner and accessories established to perpetuate locating the position of the corner:

E-7 Standard Kent County Monument in Mon. Box

Nail & KC Remon. tag SE side P. Pole	S45°W 70.42'
"X" in concrete curb return	N70°W 56.81'
"X" in concrete curb return	N30°W 53.84'
"X" in concrete curb return	N30°E 54.55'
"X" in concrete curb return	N75°E 55.00'
"X" in concrete curb return	S30°E 50.80'

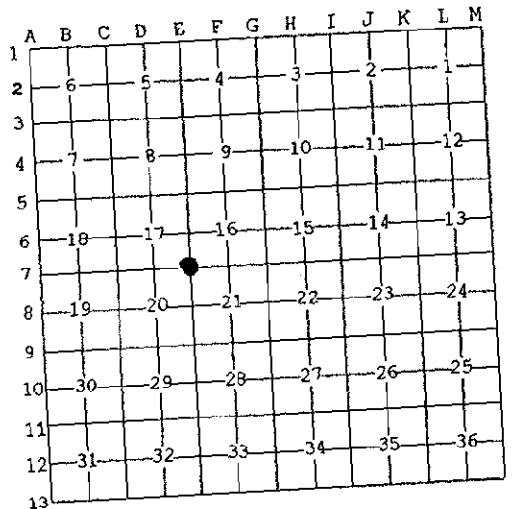
On C/L blacktop road N-S and on C/L gravel road E-W

STATE OF MICHIGAN
COUNTY OF KENT
RECEIVED FOR RECORD
1999 MAR 24 AM 8:01

REC. OF DEEDS

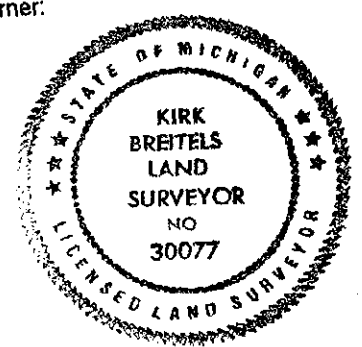
11148

Register of Deeds Stamp & File Number



P.A. 345 1990 KENT COUNTY

PEER APPROVED 2/25/99
CHAIRMAN [Signature]



Signed by [Signature]
Surveyor's Michigan License No. 30077

Date 2/25/99