

57.00
52.00

MAY 22 2000

KENT COUNTY REMONUMENTATION

SECTION

LAND CORNER RECORDATION CERTIFICATE
Filing Requirement of Act 74, Mich. P.A. 1970

REG. OF DEEDS

[Signature]

STATE OF MICHIGAN
COUNTY OF KENT
RECEIVED FOR RECORD
1999 NOV -4 AM 8:37

For corners in

<u>KENT COUNTY</u> (County)	Located In:	Corner Code #
	Tyrone Twp.	
1. Public Land Survey	T <u>10N</u> R <u>12W</u>	<u>E-11</u>
	T _____ R _____	_____
	T _____ R _____	_____
	T _____ R _____	_____
2. Property Controlling in Section	S _____ T _____ R _____	_____
	S _____ T _____ R _____	_____
3. Miscellaneous Property in Sec.	S _____ T _____ R _____	_____
	S _____ T _____ R _____	_____

11495

Register of Deeds Stamp & File Number

4. Lot No. _____, Recorded Plat _____
5. Private Claims _____

I, Kirk Breitels, in a field survey on Sept. 22, 1999 do hereby state that under requirements of P.A. 74, Michigan P.A. of 1970, the corner points mentioned in lines 1 and 2 above were in conformance with regulations and rules therefore as required in the current manual of survey instructions of the United States Department of the Interior, Bureau of Land Management or by a decree of a Court of Law and /or that the corner points mentioned in lines 3, 4 and 5 above were in conformance with the rules of the Michigan Board of Land Surveyors or by a Decree of a Court of Law; established, re-established, monumented, recovered, found as expressed below:

NOTE: Not more than 2 corners, all in the same town and range, may be recorded on this certificate.

A	B	C	D	E	F	G	H	I	J	K	L	M
1												
2	6		5		4		3		2		1	
3												
4	7		8		9		10		11		12	
5												
6	18		17		16		15		14		13	
7												
8	19		20		21		22		23		24	
9												
10	30		29		28		27		26		25	
11												
12	31		32		33		34		35		36	
13												

P.A. 345 1990 KENT COUNTY

PEER APPROVED 9/23/99
CHAIRMAN [Signature]

A. Description of original monument and accessories and/or subsequent restoration:

E-11 1837 GLO	Whitcomb	Set Post
Kent Co. Wits		Iron
1971 LCRC #88	Spicer	Square Iron in Mon. Box
1983 LCRC #3424	Bueche	Set Kent County Monument in Mon. Box
1994 LCRC #7582	J. Glaza	Kent County Monument

The position of this corner was previously approved by the Kent County Remonumentation Peer Group, monumented by John C. Bueche on 5-17-83 and was recorded per LCRC #3424.

B. Description of corner evidence found and/or method applied in restoring or reestablishing corner:

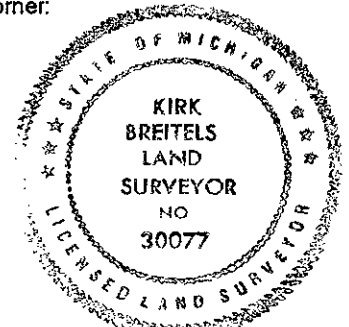
E-11 Found Kent County Monument (Harrison) per witnesses from above LCRC as set by John C. Bueche in place of the Square Iron he found in a Mon. Box. Said Iron checks with Kent Co. Wits. and LCRC #88.
LCRC #3424 LCRC #7582

NW corner brick building	S45°E 49.14'	NW corner brick building	S45°E 49.22'
SW corner build at 1 st step	N45°E 50.53'	Nail & Remon. tag P. Pole	N70°W 120.87'
Back of walks	S45°W 43.92'	Nail & Remon. tag Lt. Pole	N10°W 99.99'
Back of walks	N45°W 44.57'	Nail & Remon. tag P. Pole	N35°E 43.48'
Nail & Remon. tag P. Pole	S70°E 107.23'	Nail & Remon. tag G. Pole	S60°W 50.07'

The selected location is accepted by me and is generally accepted by professional surveyors as the best available evidence of the position of the original corner.

C. Description of monument for corner and accessories established to perpetuate locating the position of the corner:

E-11 Standard Kent County Monument in Mon. Box	
NW corner brick building	S45°E 49.18'
Nail & KC Remon. tag N. side P. Pole	N70°W 120.86'
Nail & KC Remon. tag NW side P. Pole	N35°E 43.48'
Nail & KC Remon. tag N. side G. Pole	S60°W 50.01'
NE corner brick building	S70°E 107.32'
SE corner block building	N40°W 98.35'



Signed by [Signature]
Surveyor's Michigan License No. 30077

Date 10/28/99