

Surveyors  
 Board of Surveyors

MAY 22 2000

KENT COUNTY REMONUMENTATION

LAND CORNER RECORDATION CERTIFICATE  
 Filing Requirement of Act 74, Mich. P.A. 1970

SECTION

REG. OF DEEDS

STATE OF MICHIGAN  
 COUNTY OF KENT  
 RECEIVED FOR RECORD  
 1999 MAR 24 AM 9:02

For corners in

KENT COUNTY (County)	Located In:	Corner Code #
	Tyrone Twp.	F-7
1. Public Land Survey	T 10N R 12W	
	T ___ R ___	
	T ___ R ___	
	T ___ R ___	
2. Property Controlling in Section	S ___ T ___ R ___	
	S ___ T ___ R ___	
3. Miscellaneous Property in Sec.	S ___ T ___ R ___	
	S ___ T ___ R ___	

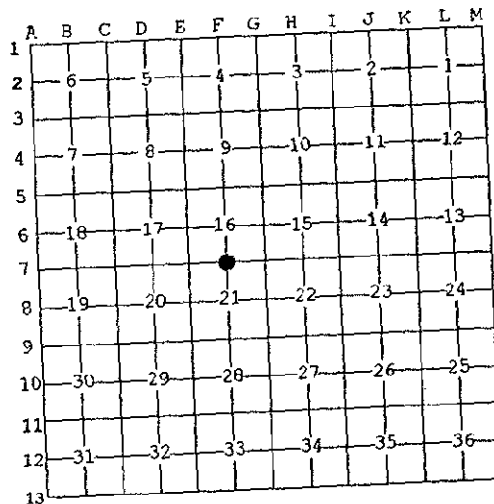
11154

Register of Deeds Stamp & File Number

4. Lot No. \_\_\_\_\_, Recorded Plat \_\_\_\_\_  
 5. Private Claims \_\_\_\_\_

I, Kirk Breitels, in a field survey on Jan. 25, 1999 do hereby state that under requirements of P.A. 74, Michigan P.A. of 1970, the corner points mentioned in lines 1 and 2 above were in conformance with regulations and rules therefore as required in the current manual of survey instructions of the United States Department of the Interior, Bureau of Land Management or by a decree of a Court of Law and/or that the corner points mentioned in lines 3, 4 and 5 above were in conformance with the rules of the Michigan Board of Land Surveyors or by a Decree of a Court of Law, established, re-established, monumented, recovered, found as expressed below:

NOTE: Not more than 2 corners, all in the same town and range, may be recorded on this certificate.



A. Description of original monument and accessories and/or subsequent restoration:

F-7 1837	GLO	Whitcomb	Set Post
1895-1919	Williams & Works		Stone
1938	Kent Co. Wits		Iron
1983	LCRC #3686	Bueche	Set Kent County Monument
1994	LCRC #7529	J. Glaza	Kent County Monument

P.A. 345 1990 KENT COUNTY  
 PEER APPROVED 2/25/99  
 CHAIRMAN [Signature]

The position of this corner was previously approved by the Kent County Remonumentation Peer Group, monumented by John C. Bueche on 12-5-83 and was recorded per LCRC #3686.

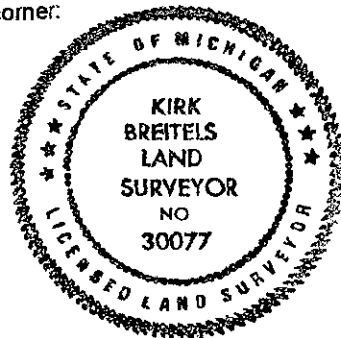
B. Description of corner evidence found and/or method applied in restoring or reestablishing corner:

F-7 Found Kent County Monument (Harrison) per witnesses from above LCRC as set by John C. Bueche in place of the 1 1/2" Iron over a large Stone he found. Both check with Kent Co. Wits. and Williams & Works information.  
 LCRC #3686  
 Nail & Remon. tag 40" Oak S65°E 76.77' Nail & Remon. tag 45" Oak S65°E 76.68'  
 Nail & Remon. tag dbl. 10" Oak S45°W 66.92' Nail & Remon. tag 14" dbl. Oak S45°W 66.72'  
 Nail & Remon. tag 40" Oak S80°W 88.14' Nail & Remon. tag 30" Oak-S80°W 88.03'  
 SE cor. garage foundation N25°W 150.35' Nail & Remon. tag 10" Sassafras N75°E 77.15'  
 "V" cut on fence post N00°E 34.00' C/L gravel road E-W is North 3' ±  
 Nail & Remon. tag 10" Sassafras N75°E 77.0' On C/L bit. road to South

The selected location is accepted by me and is generally accepted by professional surveyors as the best available evidence of the position of the original corner.

C. Description of monument for corner and accessories established to perpetuate locating the position of the corner:

F-7 Standard Kent County Monument		
Nail & KC Remon. tag S. side 48" Oak	S65°E	76.73'
Nail & KC Remon. tag NW side 16" dbl. Oak	S45°W	66.76'
Nail & KC Remon. tag N. side 32" Oak	S80°W	88.03'
Nail & KC Remon. tag S. side 12" Sassafras	N75°E	77.15'
C/L gravel road E-W is North 3' ±		
On C/L bit. road to South		



Signed by [Signature]  
 Surveyor's Michigan License No. 30077

Date 2/25/99