

\$7.00
\$2.00

MAY 22 2000

KENT COUNTY REMONUMENTATION

LAND CORNER RECORDATION CERTIFICATE
Filing Requirement of Act 74, Mich. P.A. 1970

SECTION

For corners in

KENT COUNTY
(County)

Located In:

Corner Code #

Tyrone Twp.
F-11

1. Public Land Survey

T 10N R 12W
T R
T R
T R

2. Property Controlling in Section

S T R
S T R

3. Miscellaneous Property in Sec.

S T R
S T R

4. Lot No. _____, Recorded Plat _____
5. Private Claims _____

REG. OF DEEDS

[Signature]

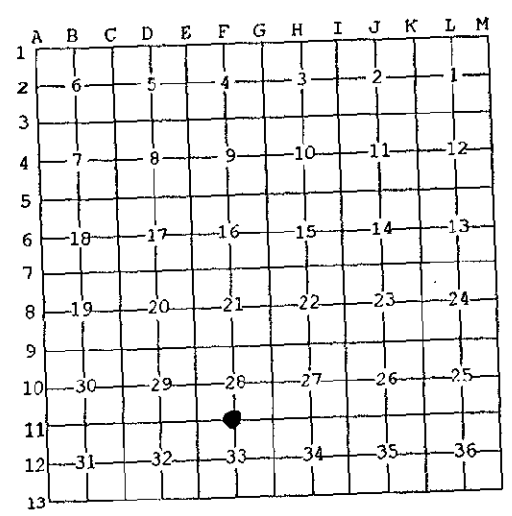
1999 MAR 24 AM 8:02

STATE OF MICHIGAN
COUNTY OF KENT
RECEIVED FOR RECORD

11156

Register of Deeds Stamp & File Number

I, Kirk Breitels, in a field survey on Jan. 26, 1999 do hereby state that under requirements of P.A. 74, Michigan P.A. of 1970, the corner points mentioned in lines 1 and 2 above were in conformance with regulations and rules therefore as required in the current manual of survey instructions of the United States Department of the Interior, Bureau of Land Management or by a decree of a Court of Law and /or that the corner points mentioned in lines 3, 4 and 5 above were in conformance with the rules of the Michigan Board of Land Surveyors or by a Decree of a Court of Law; established, re-established, monumented, recovered, found as expressed below:



NOTE: Not more than 2 corners, all in the same town and range, may be recorded on this certificate.

A. Description of original monument and accessories and/or subsequent restoration:

F-11 1837	GLO	Whitcomb	Set Post
1966	Kent Co. Wits		Iron
1977	LCRC #1067	Merdzinski	1" Iron in Mon. Box
1983	LCRC #3653	Nederveld	Set Kent County Monument in Mon. Box
1994	LCRC #7552	J. Glaza	Kent County Monument
1995	LCRC #8748	Breitels	Reset Kent County Monument in Mon. Box after const.

P.A. 345 1990 KENT COUNTY
PEER APPROVED 2/25/99
CHAIRMAN [Signature]

The position of this corner was previously approved by the Kent County Remonumentation Peer Group, monumented by Gordon D. Nederveld on 9-8-83 and was recorded per LCRC #3653.

B. Description of corner evidence found and/or method applied in restoring or reestablishing corner:

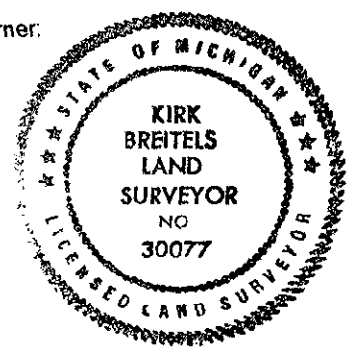
F-11 Found Kent County Monument (Harrison) per witnesses from above LCRC as reset by Kirk Breitels in the same location as set by Gordon D. Nederveld in place of the 1" Iron he found inside a Mon. Box. Said Iron checks with LCRC #1067 and Kent Co. Wits.

LCRC #3653	Nail & Remon. tag P. Pole N00°W 70.65'	LCRC #7552 - #8748	Nail & Remon. tag P. Pole N00°W 70.61' - 70.64'
	Nail & Remon. tag P. Pole N68°W 256.01'		Nail & Remon. tag P. Pole N75°W 255.87' - 255.98'
	"X" on top 12" culv. S35°E 28.47'		"X" on top conc. culv. S35°E 28.47' - 28.47'
	"X" on top 12" culv. N48°E 34.43'		"X" on top conc. culv. N48°E 34.43' - 34.43'
			Nail & Remon. tag P. Pole N75°E 263.12' - 263.12'

The selected location is accepted by me and is generally accepted by professional surveyors as the best available evidence of the position of the original corner.

C. Description of monument for corner and accessories established to perpetuate locating the position of the corner:

F-11 Standard Kent County Monument in Mon. Box	
Nail & KC Remon. tag W. side P. Pole	N00°W 70.64'
Nail & KC Remon. tag N. side P. Pole	N75°W 255.98'
"X" top C/L E. end 12" concrete culvert	S35°E 28.47'
"X" top C/L E. end 12" concrete culvert	N48°E 34.43'
Nail & KC Remon. tag S. side P. Pole	N75°E 263.12'
On C/L of E-W asphalt road (17 Mile Rd.)	



Signed by *[Signature]*
Surveyor's Michigan License No. 30077

Date 2/25/99