

\$7.00
\$2.00

MAY 22 2000

KENT COUNTY REMONUMENTATION

SECTION

LAND CORNER RECORDATION CERTIFICATE
Filing Requirement of Act 74, Mich. P.A. 1970

STATE OF MICHIGAN
COUNTY OF KENT
RECEIVED FOR RECORD
1999 MAR 21 AM 8:02

REG. OF DEEDS
[Signature]

11166

Register of Deeds Stamp & File Number

For corners in
KENT COUNTY
(County)

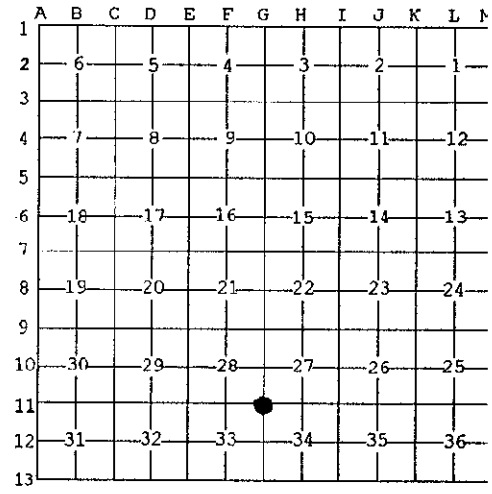
Located In:	Corner Code #
T10N R 12W	Tyrone Twp. G-11
T R	
T R	
T R	
S T R	
S T R	
S T R	
S T R	

- 1. Public Land Survey
- 2. Property Controlling in Section
- 3. Miscellaneous Property in Sec.

- 4. Lot No. _____, Recorded Plat _____
- 5. Private Claims _____

I, Kirk Breitels, in a field survey on Jan. 26, 1999 do hereby state that under requirements of P.A. 74, Michigan P.A. of 1970, the corner points mentioned in lines 1 and 2 above were in conformance with regulations and rules therefore as required in the current manual of survey instructions of the United States Department of the Interior, Bureau of Land Management or by a decree of a Court of Law and/or that the corner points mentioned in lines 3, 4 and 5 above were in conformance with the rules of the Michigan Board of Land Surveyors or by a Decree of a Court of Law; established, re-established, monumented, recovered, found as expressed below:

NOTE: Not more than 2 corners, all in the same town and range, may be recorded on this certificate.



A. Description of original monument and accessories and/or subsequent restoration:

G-11 1837	GLO	Whitcomb	Set Post
1938	Kent Co. Wits		3/4" Iron
1977	LCRC #3	Ratekin	3/4" Iron
1983	LCRC #3654	Nederveld	Set Kent County Monument
1994	LCRC #7586	J. Glaza	Kent County Monument
1995	LCRC #8749	Breitels	Reset Kent County Monument in Mon. Box after const.

The position of this corner was previously approved by the Kent County Remonumentation Peer Group, monumented by Gordon D. Nederveld on 9-8-83 and was recorded per LCRC #3654.

P.A. 345 1990 KENT COUNTY
PEER APPROVED 2/25/99
CHAIRMAN [Signature]

B. Description of corner evidence found and/or method applied in restoring or reestablishing corner:

G-11 Found Kent County Monument (Harrison) per witnesses from above LCRC as reset by Kirk Breitels in the same location as set by Gordon D. Nederveld in place of the 3/4" Iron he found. Said Iron checks with LCRC #3 and Kent Co. Wits.	
LCRC #3654	LCRC #7586 - #8749
Nail & Remon. tag P. Pole N10°E 206.24'	Nail & Remon. tag P. Pole N10°E 206.24' - 206.40'
Nail & Remon. tag 10" Elm N06°E 157.55'	Nail & Remon. tag 10" Elm N06°W 157.48' - 157.51'
SW corner CP tower S36°E 70.10'	Nail & Remon. tag fence post S07°W 41.49' - 41.49'
NE corner CP tower S55°E 71.91'	Nail & Remon. tag 6" tree N65°W 84.83' - 84.83'

The selected location is accepted by me and is generally accepted by professional surveyors as the best available evidence of the position of the original corner.

C. Description of monument for corner and accessories established to perpetuate locating the position of the corner:

G-11 Standard Kent County Monument in Mon. Box	
Nail & KC Remon. tag W. side P. Pole	N10°E 206.40'
Nail & KC Remon. tag E. side 10" Elm	N06°W 157.51'
Nail & KC Remon. tag E. side fence post	S07°W 41.57' (leaning)
Nail & KC Remon. tag SW side 8" tree	N65°W 84.83'
SW corner CP tower leg	S36°E 70.1' ±
NE corner CP tower leg	S55°E 71.9' ±



Signed by *[Signature]*
Surveyor's Michigan License No. 30077

Date 2/25/99