

\$7.00
\$2.00

SURVEY &
REMONUMENTATION

MAR 08 1999

KENT COUNTY REMONUMENTATION

LAND CORNER RECORDATION CERTIFICATE
Filing Requirement of Act 74, Mich. P.A. 1970

STATE OF MICHIGAN
COUNTY OF KENT
RECEIVED FOR RECORD
98 MAY 21 AM 8:30
REG. OF DEEDS
[Signature]

For corners in

SECTION

KENT COUNTY
(County)

Located In:

Corner Code #

- 1. Public Land Survey T 10N R 12W G-13
 T R
 T R
 T R
- 2. Property Controlling S T R
 in Section S T R
- 3. Miscellaneous S T R
 Property in Sec. S T R

10595

Register of Deeds Stamp & File Number

- 4. Lot No. _____, Recorded Plat _____
- 5. Private Claims _____

	A	B	C	D	E	F	G	H	I	J	K	L	M
1													
2		6		5		4		3		2		1	
3													
4		7		8		9		10		11		12	
5													
6		18		17		16		15		14		13	
7													
8		19		20		21		22		23		24	
9													
10		30		29		28		27		26		25	
11													
12		31		32		33		34		35		36	
13													

I, Kirk Breitels, in a field survey on Feb. 20, 1998 do hereby state that under requirements of P.A. 74, Michigan P.A. of 1970, the corner points mentioned in lines 1 and 2 above were in conformance with regulations and rules therefore as required in the current manual of survey instructions of the United States Department of the Interior, Bureau of Land Management or by a decree of a Court of Law and/or that the corner points mentioned in lines 3, 4 and 5 above were in conformance with the rules of the Michigan Board of Land Surveyors or by a Decree of a Court of Law; established, re-established, monumented, recovered, found as expressed below:

NOTE: Not more than 2 corners, all in the same town and range, may be recorded on this certificate.

A. Description of original monument and accessories and/or subsequent restoration:

- | | | |
|--------------------|------------|--------------------------|
| G-13 1837 GLO | Brookfield | Set Post |
| 1958 Kent Co. Wits | | Iron |
| 1992 LCRC #6614 | Bueche | Set Kent County Monument |
| 1994 LCRC #7563 | J. Glaza | Kent County Monument |

P.A. 345 1990 KENT COUNTY
PEER APPROVED 4/30/98
CHAIRMAN [Signature]

The position of this corner was previously approved by the Kent County Remonumentation Peer Group, monumented by John C. Bueche on 10-12-92 and was recorded per LCRC#6614.

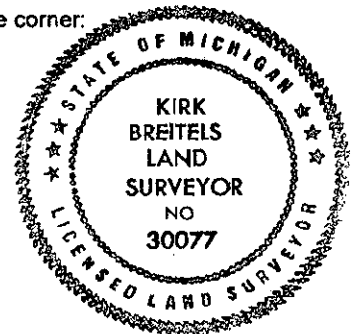
B. Description of corner evidence found and/or method applied in restoring or reestablishing corner:

- G-13 Found Kent County Monument (Harrison) per witnesses from above LCRC as set by John C. Bueche in place of the Iron he found. Said Iron checks with Kent Co. Wits.
- | | | | |
|----------------------------------|--------------|----------------------------------|--------------|
| LCRC #6614 | LCRC #7563 | | |
| Nail & Remon. tag 6" Oak | N40°W. 5.32' | Nail & Remon. tag 6" Oak | N40°W 5.32' |
| SW cor. tower leg | S55°E 62.73' | SW corner tower leg (at ground) | S55°E 62.73' |
| NW cor. tower leg | S75°E 58.82' | NW corner tower leg (at ground) | S75°E 58.82' |
| Nail & Remon. tag top fence post | South 3.19' | Nail & Remon. tag top fence post | South 3.27' |
| Nail & Remon. tag | | Kent Co. Mon. (G-1, T9N, R12W) | N90°E 12.20' |

The selected location is accepted by me and is generally accepted by professional surveyors as the best available evidence of the position of the original corner.

C. Description of monument for corner and accessories established to perpetuate locating the position of the corner:

- G-13 Standard Kent County Monument
- | | |
|---|--------------|
| Nail & KC Remon. tag N. side 6" Oak | N40°W 5.37' |
| SW corner tower leg (at ground) | S55°E 62.73' |
| NW corner tower leg (at ground) | S75°E 58.82' |
| Nail & KC Remon. tag top of corner fence post | South 3.20' |
| Nail & KC Remon. tag N. side 3" Oak | N90°W 17.25' |
| Kent Co. Mon. (G-1, T9N, R12W) | N90°E 12.20' |



Signed by [Signature]
Surveyor's Michigan License No. 30077

Date 4/30/98