

12.00  
52.00

MAY 22 2000

KENT COUNTY REMONUMENTATION

LAND CORNER RECORDATION CERTIFICATE  
Filing Requirement of Act 74, Mich. P.A. 1970

SECTION

For corners in

KENT COUNTY

(County)

Located In:

Corner Code #

Tyrone Twp.

1. Public Land Survey

T 10N R 12W

H-2

T R

T R

T R

2. Property Controlling in Section

S

T R

S

T R

3. Miscellaneous Property in Sec.

S

T R

S

T R

4. Lot No. \_\_\_\_\_, Recorded Plat \_\_\_\_\_

5. Private Claims \_\_\_\_\_

I, Kirk Breitels, in a field survey on Oct. 19, 1999 do hereby state that under requirements of P.A. 74, Michigan P.A. of 1970, the corner points mentioned in lines 1 and 2 above were in conformance with regulations and rules therefore as required in the current manual of survey instructions of the United States Department of the Interior, Bureau of Land Management or by a decree of a Court of Law and /or that the corner points mentioned in lines 3, 4 and 5 above were in conformance with the rules of the Michigan Board of Land Surveyors or by a Decree of a Court of Law; established, re-established, monumented, recovered, found as expressed below:

NOTE: Not more than 2 corners, all in the same town and range, may be recorded on this certificate.

A. Description of original monument and accessories and/or subsequent restoration:

H-2 1837 GLO Not Set  
Williams & Works No information  
Kent Co. Wits No information

P.A. 345 1990 KENT COUNTY  
PEER APPROVED 10/28/99  
CHAIRMAN Henry Hulse

B. Description of corner evidence found and/or method applied in restoring or reestablishing corner:

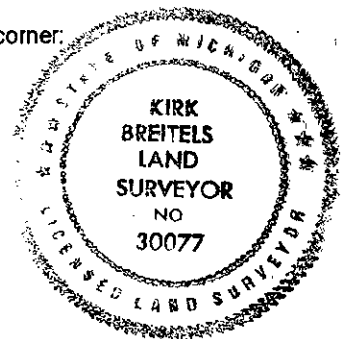
H-2 Established Intersection of 1/4 lines and found nothing at corner. N-S fence is 5' East and E-W fence is 24' North.

Minimal survey information in this section agrees with Intersection of 1/4 lines.

The Intersection of 1/4 lines is accepted by me and is generally accepted by professional surveyors as the best available evidence of the position of the corner.

C. Description of monument for corner and accessories established to perpetuate locating the position of the corner:

H-2 Set Standard Kent County Monument at the Intersection of 1/4 lines  
Northerly corner (wood 2"x4") deer blind S00°E 168.75'  
Nail & KC Remon. tag W. side 6" Poplar S25°E 179.68'  
Nail & KC Remon. tag E. side 6" Poplar N15°E 29.48'  
Nail & KC Remon. tag SW side 6" Poplar N45°W 50.03'  
N-S fence is 5' East & E-W fence is 24' North.



Signed by Kirk Breitels  
Surveyor's Michigan License No. 30077

Date 12/6/99

11608  
Register of Deeds Stamp & File Number

Grid with columns A-L and rows 1-12. Cell H-3 is circled.