

\$7.00
\$2.00

SURVEY &
RECORDATION

MAY 24 2000

KENT COUNTY REMONUMENTATION

LAND CORNER RECORDATION CERTIFICATE Filing Requirement of Act 74, Mich. P.A. 1970

For corners in

KENT COUNTY
(County)

SECTION _____

Located In:

Corner Code #

Tyrone Twp.

1. Public Land Survey	T <u>10</u> N R <u>12</u> W	H-5
	T _____ R _____	_____
	T _____ R _____	_____
	T _____ R _____	_____
2. Property Controlling in Section	S _____ T _____ R _____	_____
	S _____ T _____ R _____	_____
3. Miscellaneous Property in Sec.	S _____ T _____ R _____	_____
	S _____ T _____ R _____	_____

1999 MAR 24 AM 8:00
 REGISTER OF DEEDS
 STATE OF MICHIGAN
 COUNTY OF KENT
 RECEIVED FOR RECORD
 11163
 Register of Deeds Stamp & File Number

4. Lot No. _____, Recorded Plat _____
5. Private Claims _____

I, Kirk Breitels, in a field survey on Jan. 22, 19 99 do hereby state that under requirements of P.A. 74, Michigan P.A. of 1970, the corner points mentioned in lines 1 and 2 above were in conformance with regulations and rules therefore as required in the current manual of survey instructions of the United States Department of the Interior, Bureau of Land Management or by a decree of a Court of Law and/or that the corner points mentioned in lines 3, 4 and 5 above were in conformance with the rules of the Michigan Board of Land Surveyors or by a Decree of a Court of Law, established, re-established, monumented, recovered, found as expressed below:

NOTE: Not more than 2 corners, all in the same town and range, may be recorded on this certificate.

A	B	C	D	E	F	G	H	I	J	K	L	M
1												
2	6	5	4	3	2	1						
3												
4	7	8	9	10	11	12						
5												
6	18	17	16	15	14	13						
7												
8	19	20	21	22	23	24						
9												
10	30	29	28	27	26	25						
11												
12	31	32	33	34	35	36						
13												

A. Description of original monument and accessories and/or subsequent restoration:

H-5 1837	GLO	Whitcomb	Set Post
1967	Kent Co. Wits		Mon. Box
1975	LCRC #824	Bonnema	3/4" Iron in Mon. Box
1983	LCRC #3432	Bueche	Set Kent County Monument in Mon. Box
1991	LCRC #5997	Byl	Kent County Monument in Mon. Box

P.A. 345 1990 KENT COUNTY
PEER APPROVED 2/25/99
CHAIRMAN [Signature]

The position of this corner was previously approved by the Kent County Remonumentation Peer Group, monumented by John C. Bueche on 5-18-83 and was recorded per LCRC #3432.

B. Description of corner evidence found and/or method applied in restoring or reestablishing corner:

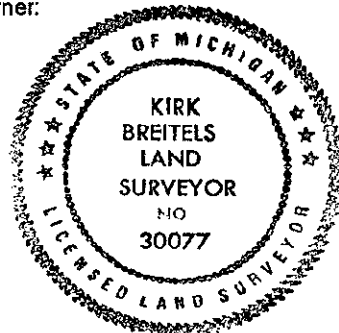
H-5 Found Kent County Monument (Harrison) per witnesses from above LCRC as set by John C. Bueche in place of the Iron he found inside a Mon. Box. Said Iron checks with Kent Co. Wits. and LCRC #824.
LCRC #3432 LCRC #5997

Nail & Remon. tag 40" Oak	S05°E	159.35'	Nail & Remon. tag 42" Oak	S05°E	159.35'
Nail & Remon. tag 26" Oak	N60°E	48.22'	Nail & Remon. tag 28" Oak	N60°E	48.23'
"X" cut W. end conc. culv.	N70°W	89.75'	"X" cut top of 18" conc. culv.	N70°W	89.75'
"X" cut E. end conc. culv.	S75°W	91.00'	"X" cut top of 18" conc. culv.	S75°W	91.03'
PK Nail in W. end CMP	S20°W	92.30'	PK Nail top W. end 7' CMP	S20°W	92.30'
PK Nail in E. end CMP	S15°E	89.30'	PK Nail top E. end 7' CMP	S15°E	89.30'

The selected location is accepted by me and is generally accepted by professional surveyors as the best available evidence of the position of the original corner.

C. Description of monument for corner and accessories established to perpetuate locating the position of the corner:

H-5 Standard Kent County Monument in Mon. Box		
Nail & KC Remon. tag E. side 42" dead Oak	S05°E	159.35'
Nail & KC Remon. tag NW side 36" Oak	N60°E	48.27'
"X" cut top of 18" concrete culvert	N70°W	89.80'
"X" cut top of 18" concrete culvert	S75°W	91.03'
PK Nail top W. end 7' CMP	S20°W	92.30'
PK Nail top E. end 7' CMP	S15°E	89.30'
Nail & KC Remon. tag NE side wood fence post	S60°E	51.19'
C/L E-W bit. road is N. 3' and C/L grav. road S. is W. 7'		



Signed by [Signature]
Surveyor's Michigan License No. 30077

Date 2/25/99