

\$7.00  
\$2.00

MAY 22 2000

SECTION

# KENT COUNTY REMONUMENTATION

## LAND CORNER RECORDATION CERTIFICATE Filing Requirement of Act 74, Mich. P.A. 1970

Seq. 2

STATE OF MICHIGAN  
COUNTY OF KENT  
RECEIVED FOR RECORD  
1999 MAR 24 AM 9:02

REG. OF DEEDS

*[Signature]*

11170

Register of Deeds Stamp & File Number

For corners in

KENT COUNTY (County)	Located In:	Corner Code #
1. Public Land Survey	T <u>10</u> N R <u>12</u> W	Tyrone Twp. H-10
	T ___ R ___	_____
	T ___ R ___	_____
	T ___ R ___	_____
2. Property Controlling in Section	S ___ T ___ R ___	_____
	S ___ T ___ R ___	_____
3. Miscellaneous Property in Sec.	S ___ T ___ R ___	_____
	S ___ T ___ R ___	_____

- 4. Lot No. \_\_\_\_\_, Recorded Plat \_\_\_\_\_
- 5. Private Claims \_\_\_\_\_

I, Kirk Breitels, in a field survey on Feb. 9, 19 99 do hereby state that under requirements of P.A. 74, Michigan P.A. of 1970, the corner points mentioned in lines 1 and 2 above were in conformance with regulations and rules therefore as required in the current manual of survey instructions of the United States Department of the Interior, Bureau of Land Management or by a decree of a Court of Law and/or that the corner points mentioned in lines 3, 4 and 5 above were in conformance with the rules of the Michigan Board of Land Surveyors or by a Decree of a Court of Law; established, re-established, monumented, recovered, found as expressed below:

NOTE: Not more than 2 corners, all in the same town and range, may be recorded on this certificate.

	A	B	C	D	E	F	G	H	I	J	K	L	M
1													
2	6	5	4	3	2	1							
3													
4	7	8	9	10	11	12							
5													
6	18	17	16	15	14	13							
7													
8	19	20	21	22	23	24							
9													
10	30	29	28	27	26	25							
11													
12	31	32	33	34	35	36							
13													

### A. Description of original monument and accessories and/or subsequent restoration:

H-10 1837	GLO	Whitcomb	Not Set
	Kent Co. Wits		No information
1993	LCRC #6841	W. Glaza	Set Kent County Monument

P.A. 345 1990 KENT COUNTY  
PEER APPROVED 2/25/99  
CHAIRMAN Wallace E. Glaza

The position of this corner was previously approved by the Kent County Remonumentation Peer Group, monumented by Wallace E. Glaza on 9-1-93 and was recorded per LCRC #6841.

### B. Description of corner evidence found and/or method applied in restoring or reestablishing corner:

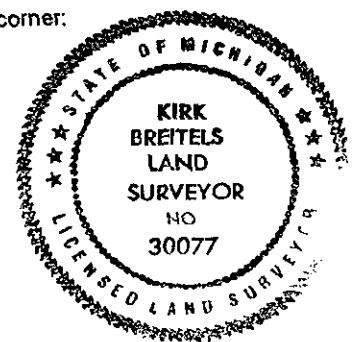
H-10 Found Kent County Monument (Harrison) per witnesses from above LCRC as set by Wallace E. Glaza in place of the MVK Iron he found. Said MVK Iron checks intersection of 1/4 lines per MVK information.

LCRC #6841				
Nail & Remon. tag W. side 22" Maple	N07°E	431.34'		
Nail & Remon. tag N. side P. Pole	S88°E	211.73'		
Nail & Remon. tag W. side 24" Locust	S10°E	295.39'		
West edge of bituminous road	East	7.8'		

The selected location is accepted by me and is generally accepted by professional surveyors as the best available evidence of the position of the corner.

### C. Description of monument for corner and accessories established to perpetuate locating the position of the corner:

H-10 Standard Kent County Monument				
Nail & KC Remon. tag N. side P. Pole	N07°E	211.69'		
Nail & KC Remon. tag W. side 26" Locust	S10°E	295.53'		
Nail & KC Remon. tag SW side 6" Elm	S55°E	68.18'		
Nail & KC Remon. tag E. side Twin 10" Elm	N00°E	219.37'		
West edge of bituminous road	East	7.8' ±		
At S. edge of field drive				



Signed by *[Signature]*  
Surveyor's Michigan License No. 30077

Date 2/25/99