

SURVEY & REMONUMENTATION

KENT COUNTY REMONUMENTATION

\$7.00
\$2.00

MAR 08 1999

SECTION

LAND CORNER RECORDATION CERTIFICATE
Filing Requirement of Act 74, Mich. P.A. 1970

For corners in
KENT COUNTY
(County)

Located In:	Corner Code #
T-10N R-12W	H-13
T- R-	
T- R-	
T- R-	
S- T- R-	
S- T- R-	
S- T- R-	
S- T- R-	

- Public Land Survey
- Property Controlling in Section
- Miscellaneous Property in Sec.

- Lot No. _____, Recorded Plat _____
- Private Claims _____

I, Kirk Breitels, in a field survey on Feb. 20, 1998 do hereby state that under requirements of P.A. 74, Michigan P.A. of 1970, the corner points mentioned in lines 1 and 2 above were in conformance with regulations and rules therefore as required in the current manual of survey instructions of the United States Department of the Interior, Bureau of Land Management or by a decree of a Court of Law and/or that the corner points mentioned in lines 3, 4 and 5 above were in conformance with the rules of the Michigan Board of Land Surveyors or by a Decree of a Court of Law; established, re-established, monumented, recovered, found as expressed below:

NOTE: Not more than 2 corners, all in the same town and range, may be recorded on this certificate.

STATE OF MICHIGAN
COUNTY OF KENT
RECEIVED FOR RECORD

98 MAY 21 AM 8:30

REG. OF DEEDS

Handwritten Signature

10596

Register of Deeds Stamp & File Number

	A	B	C	D	E	F	G	H	I	J	K	L	M
1													
2	6		5		4		3		2		1		
3													
4	7		8		9		10		11		12		
5													
6	10		17		16		15		14		13		
7													
8	19		20		21		22		23		24		
9													
10	30		29		28		27		26		25		
11													
12	31		32		33		34		35		36		
13													

A. Description of original monument and accessories and/or subsequent restoration:

H-13 1837 GLO	Brookfield	Set Post
Kent Co. Wits		Stone
1972 LCRC #159	Bonnema	"T" Iron
1980 LCRC #1744	Merdzinski	Set Kent County Monument
1991 LCRC #6001	Byl	Kent County Monument

P.A. 345 1990 KENT COUNTY
PEER APPROVED 4/30/98
CHAIRMAN *Handwritten Signature*

The position of this corner was previously approved by the Kent County Remonumentation Peer Group, monumented by John A. Merdzinski on 12-16-80 and was recorded per LCRC#1744.

B. Description of corner evidence found and/or method applied in restoring or reestablishing corner:

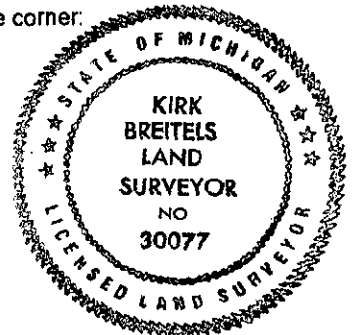
H-13 Found Kent County Monument (Harrison) per witnesses from above LCRC as set by John A. Merdzinski in place of the "T" Iron he found. Said "T" Iron checks with Kent Co. Wits. and LCRC #159.
LCRC #1744 LCRC #6001

Nail-tag 6" Ash N30°W 22.62'	Nail-tag 6" Ash N30°W 22.50'	Fc. Cor. Post
Nail-tag 10" Elm N00°W 25.65'	N85°E 60.61'	Nail & Remon. tag 12" Elm N00°W 25.49'
N85°E 60.61'		N45°W 0.5'
Nail-tag 6" Tw. Birch N35°E 27.07'		Nail & Remon. tag 16" Ash S65°W 22.30'
Nail-tag 12" Ash S65°W 22.30'		Nail & Remon. tag 27" Maple S15°W 28.56'
Nail-tag 22" Maple S15°W 28.56'	Fc. Cor. Post	Nail & Remon. tag 30" Beech S25°E 24.53'
Nail-tag 24" Beech S25°E 24.53'	N45°W 0.5'	Nail & Remon. tag 8" Ash N85°E 60.74'

The selected location is accepted by me and is generally accepted by professional surveyors as the best available evidence of the position of the original corner.

C. Description of monument for corner and accessories established to perpetuate locating the position of the corner:

H-13 Standard Kent County Monument	
Nail & KC Remon. tag W. side 12" Ash	N30°W 22.56'
Nail & KC Remon. tag W. side 14" dead Elm	N00°W 25.49'
Nail & KC Remon. tag N. side 18" Ash	S65°W 22.30'
Nail & KC Remon. tag W. side 30" Maple	S15°W 28.58'
Nail & KC Remon. tag W. side 32" Beech	S25°E 24.56'
Nail & KC Remon. tag S. side 10" Ash	N85°E 60.76'
Fence corner post (remains of fence to N-W)	N45°W 0.5'
Kent Co. Mon. (H-1, T9N, R12W)	East 36.30'



Signed by *Handwritten Signature*
Surveyor's Michigan License No. 30077

Date 4/30/98