

\$7.00
\$2.00

MAY 26 2000

KENT COUNTY REMONUMENTATION

SECTION _____

LAND CORNER RECORDATION CERTIFICATE Filing Requirement of Act 74, Mich. P.A. 1970

For corners in

<u>KENT COUNTY</u> (County)	Located In:	Corner Code #
	T <u>10N</u> R <u>12W</u>	Tyrone Twp. I-10
1. Public Land Survey	T _____ R _____	_____
	T _____ R _____	_____
	T _____ R _____	_____
2. Property Controlling in Section	S _____ T _____ R _____	_____
	S _____ T _____ R _____	_____
3. Miscellaneous Property in Sec.	S _____ T _____ R _____	_____
	S _____ T _____ R _____	_____

REG. OF DEEDS

STATE OF MICHIGAN
COUNTY OF KENT
RECEIVED FOR RECORD
1999 MAR 24 AM 8:02

11177

Register of Deeds Stamp & File Number

4. Lot No. _____, Recorded Plat _____
5. Private Claims _____

I, Kirk Breitels, in a field survey on Jan. 19, 1999 do hereby state that under requirements of P.A. 74, Michigan P.A. of 1970, the corner points mentioned in lines 1 and 2 above were in conformance with regulations and rules therefore as required in the current manual of survey instructions of the United States Department of the Interior, Bureau of Land Management or by a decree of a Court of Law and /or that the corner points mentioned in lines 3, 4 and 5 above were in conformance with the rules of the Michigan Board of Land Surveyors or by a Decree of a Court of Law; established, re-established, monumented, recovered, found as expressed below:

NOTE: Not more than 2 corners, all in the same town and range, may be recorded on this certificate.

A	B	C	D	E	F	G	H	I	J	K	L	M
1												
2	6		5		4		3		2		1	
3												
4	7		8		9		10		11		12	
5												
6	19		17		16		15		14		13	
7												
8	19		20		21		22		23		24	
9												
10	30		29		28		27	●	26		25	
11												
12	31		32		33		34		35		36	
13												

A. Description of original monument and accessories and/or subsequent restoration:

I-10 1837	GLO	Whitcomb	Set Post
1965	Kent Co. Wits		Axle in Mon. Box
1972	LCRC #190	Salisbury	Axle in Mon. Box
1980	LCRC #1745	Merdzinski	Set Kent County Monument
1991	LCRC #6011	Byl	Kent County Monument

P.A. 345 1990 KENT COUNTY
PEER APPROVED 2/25/99
CHAIRMAN Henry Huber

The position of this corner was previously approved by the Kent County Remonumentation Peer Group, monumented by John A. Merdzinski on 12-15-80 and was recorded per LCRC #1745.

B. Description of corner evidence found and/or method applied in restoring or reestablishing corner:

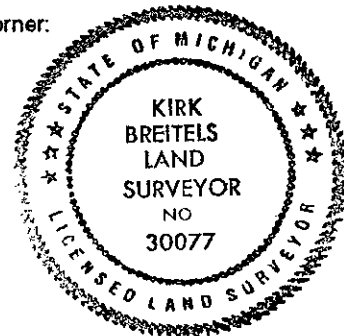
I-10 Found Kent County Monument (Harrison) per witnesses from above LCRC as set by John A. Merdzinski in place of the 2" Iron over an Axle over a Stone in a Mon. Box that he found. All check with Kent Co. Wits and LCRC #190.

LCRC #1745	Nail & Remon. tag 32" Oak	N85°W 25.96'	Nail & Remon. tag 18" Oak	S30°E 73.16'
	Nail & Remon. tag 36" Maple	S15°W 92.38'	Nail & Remon. tag 8" Twin Maple	S55°E 44.03'
	Nail & Remon. tag 12" Oak	S30°E 72.92'	Nail & Remon. tag 10" Hickory	N40°W 41.64'
	Nail & Remon. tag 8" Twin Maple	S55°E 44.03'	Nail & Remon. tag Twin 6" Poplar	N55°E 43.25'
	Nail & Remon. tag 8" Hickory clump	N40°W 41.62'	C/L "T" fence post	S90°W 32.95'
	Nail & Remon. tag 4" Twin Poplar	N50°E 66.91'		

The selected location is accepted by me and is generally accepted by professional surveyors as the best available evidence of the position of the original corner.

C. Description of monument for corner and accessories established to perpetuate locating the position of the corner:

I-10 Standard Kent County Monument	Nail & KC Remon. tag W. side 22" Oak	S30°E 73.13'
	Nail & KC Remon. tag NE side Twin 10" Maple	S55°E 44.05'
	Nail & KC Remon. tag NW side Twin 6" Poplar	N55°E 43.27'
	Nail & KC Remon. tag S. side P. Pole	S90°W 74.16'
	C/L "T" fence post	S90°W 32.80'
	6.5' West of C/L bit. road.	



Signed by Kirk Breitels
Surveyor's Michigan License No. 30077

Date 2/25/99