

MAY 22 2000

\$7.00  
\$2.00

SECTION

KENT COUNTY REMONUMENTATION

LAND CORNER RECORDATION CERTIFICATE  
Filing Requirement of Act 74, Mich. P.A. 1970

For corners in

KENT COUNTY (County)	Located In:	Corner Code #
1. Public Land Survey	T <u>10N</u> R <u>12W</u>	Tyrone Twp. <u>I-1</u>
	T <u>    </u> R <u>    </u>	<u>    </u>
	T <u>    </u> R <u>    </u>	<u>    </u>
	T <u>    </u> R <u>    </u>	<u>    </u>
2. Property Controlling in Section	S <u>    </u> T <u>    </u> R <u>    </u>	<u>    </u>
	S <u>    </u> T <u>    </u> R <u>    </u>	<u>    </u>
3. Miscellaneous Property in Sec.	S <u>    </u> T <u>    </u> R <u>    </u>	<u>    </u>
	S <u>    </u> T <u>    </u> R <u>    </u>	<u>    </u>

4. Lot No. \_\_\_\_\_, Recorded Plat \_\_\_\_\_  
5. Private Claims \_\_\_\_\_

I, Kirk Breitels, in a field survey on Sept. 23, 1999 do hereby state that under requirements of P.A. 74, Michigan P.A. of 1970, the corner points mentioned in lines 1 and 2 above were in conformance with regulations and rules therefore as required in the current manual of survey instructions of the United States Department of the Interior, Bureau of Land Management or by a decree of a Court of Law and /or that the corner points mentioned in lines 3, 4 and 5 above were in conformance with the rules of the Michigan Board of Land Surveyors or by a Decree of a Court of Law; established, re-established, monumented, recovered, found as expressed below:

NOTE: Not more than 2 corners, all in the same town and range, may be recorded on this certificate.

A. Description of original monument and accessories and/or subsequent restoration:

J-1	1837	GLO	Whitcomb	Not Post
	1985	LCRC #4376	Ochs	Set Kent County Monument on Twp. Line
	1991	LCRC #6015	Byl	Kent County Monument

P.A. 345 1900 KENT COUNTY  
PEER APPROVED 9/23/99  
CHAIRMAN [Signature]

The position of this corner was previously approved by the Kent County Remonumentation Peer Group, monumented by Norman L. Ochs on 10-23-85 and was recorded per LCRC #4376.

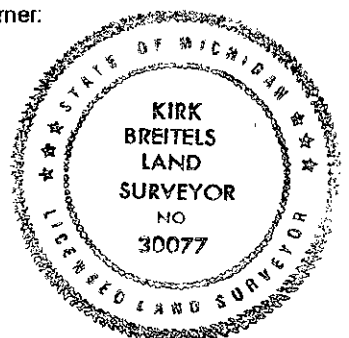
B. Description of corner evidence found and/or method applied in restoring or reestablishing corner:

J-1	Found Kent County Monument (Harrison) per witnesses from above LCRC as set on Twp. Line by Norman L. Ochs in place of the Iron & Cap (Wickham) he found. Said Iron & Cap was 0.56' South of Twp. line and at midpoint of mile.
	LCRC #4376
	LCRC #6015
	Spike in Tw. 12" Maple S25°E 57.23'
	Spike in Tw. 24"-28" Maple S50°W 36.47'
	Spike in 14" Maple N35°W 46.21'
	Center of rail post N70°E 60.94'
	SF. cor. Sec. 35 Grant Twp. East 284.40'
	Nail & Remon. tag Tw. 28"-24" Maple S50°W 36.45'
	Nail & Remon. tag 18" Maple N35°W 46.19'
	Nail & Remon. tag 36" Maple S15°E 131.92'
	Center top I-beam post N70°E 61.31'
	Cast Iron Mon. SE cor. Sec. 35-11-12 East 284.25'

The selected location is accepted by me and is generally accepted by professional surveyors as the best available evidence of the position of the corner.

C. Description of monument for corner and accessories established to perpetuate locating the position of the corner:

J-1	Standard Kent County Monument
	Nail & KC Remon. tag W. side Maple cluster S50°W 36.41'
	Nail & KC Remon. tag E. side 24" Maple N35°W 46.19'
	Nail & KC Remon. tag W. side 40" Maple S15°E 131.92'
	C/L Top I-beam post (West post) N60°E 52.00'
	SE cor. Sec. 35-11-12 (Newaygo Co. Mon.) East 284.35'
	C/L river is East 80' ±



Signed by [Signature]  
Surveyor's Michigan License No. 30077

Date 10/28/99

REC. OF DEEDS  
1999 NOV -4 AM 8:37  
STATE OF MICHIGAN  
COUNTY OF KENT  
RECEIVED FOR RECORD

**11502**  
Register of Deeds Stamp & File Number