

KENT COUNTY REMONUMENTATION

LAND CORNER RECORDATION CERTIFICATE  
Filing Requirement of Act 74, Mich. P.A. 1970

STATE OF MICHIGAN  
COUNTY OF KENT  
RECEIVED FOR RECORD  
1999 MAR 24 AM 8:02

REG. OF DEEDS

11180

Register of Deeds Stamp & File Number

For corners in

KENT COUNTY

(County)

Located In:

Corner Code #

Tyrone Twp.

1. Public Land Survey	T 10NR 12W	J-5
	T ___ R ___	_____
	T ___ R ___	_____
	T ___ R ___	_____
2. Property Controlling in Section	S ___ T ___ R ___	_____
	S ___ T ___ R ___	_____
3. Miscellaneous Property in Sec.	S ___ T ___ R ___	_____
	S ___ T ___ R ___	_____

4. Lot No. \_\_\_\_\_, Recorded Plat \_\_\_\_\_  
5. Private Claims \_\_\_\_\_

I, Kirk Breitels, in a field survey on Jan. 15, 19 99 do hereby state that under requirements of P.A. 74, Michigan P.A. of 1970, the corner points mentioned in lines 1 and 2 above were in conformance with regulations and rules therefore as required in the current manual of survey instructions of the United States Department of the Interior, Bureau of Land Management or by a decree of a Court of Law and/or that the corner points mentioned in lines 3, 4 and 5 above were in conformance with the rules of the Michigan Board of Land Surveyors or by a Decree of a Court of Law; established, re-established, monumented, recovered, found as expressed below:

NOTE: Not more than 2 corners, all in the same town and range, may be recorded on this certificate.

A	B	C	D	E	F	G	H	I	J	K	L	M
1												
2	6	5	4	3	2	1						
3												
4	7	8	9	10	11	12						
5												
6	10	17	16	15	14	13						
7												
8	19	20	21	22	23	24						
9												
10	30	29	28	27	26	25						
11												
12	31	32	33	34	35	36						
13												

A. Description of original monument and accessories and/or subsequent restoration:

J-5	1837	GLO	Whitcomb	Set Post
	1936	Kent Co. Wits		Concrete Monument
	1986	LCRC #4452	Kolehouse	Set Kent County Monument
	1991	LCRC #6016	Byl	Kent County Monument

P.A. 345 1990 KENT COUNTY

PEER APPROVED 2/25/99

CHAIRMAN Randy Kolehouse

The position of this corner was previously approved by the Kent County Remonumentation Peer Group, monumented by Randy J. Kolehouse on 4-5-86 and was recorded per LCRC #4452.

B. Description of corner evidence found and/or method applied in restoring or reestablishing corner:

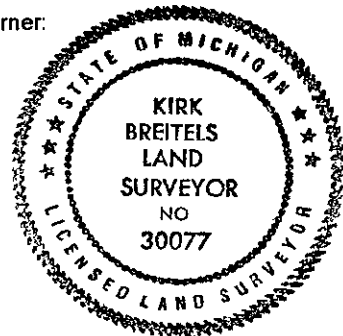
J-5 Found Kent County Monument (Harrison) per witnesses from above LCRC as set by Randy J. Kolehouse in place of the PK Nail he found over a Concrete Monument. Both check with Kent Co. Wits.

LCRC #4452	LCRC #6016
Nail & Remon. tag 18" Tw. Oak South 70.47'	Nail & Remon. tag 20" Tw. Oak S00°W 70.47'
Nail & Remon. tag 12" Pine S70°W 53.45'	Nail & Remon. tag 14" Pine S70°W 53.41'
Nail & Remon. tag 12" Pine N60°W 79.80'	Nail & Remon. tag 14" Pine N60°W 79.74'
Nail & Remon. tag 12" Pine N45°W 46.50'	Nail & Remon. tag 14" Pine N45°W 46.43'
Concrete Monument North 33.0'	Concrete Monument North 33.00'

C/L 20 Mile Rd. is North 10'  
The selected location is accepted by me and is generally accepted by professional surveyors as the best available evidence of the position of the original corner.

C. Description of monument for corner and accessories established to perpetuate locating the position of the corner:

J-5 Standard Kent County Monument	
Nail & KC Remon. tag E. side Twin 22" Oak	S00°W 70.47'
Nail & KC Remon. tag NW side 16" Pine	S70°W 53.45'
Nail & KC Remon. tag SW side 16" Pine	N60°W 79.80'
Nail & KC Remon. tag SW side 16" Pine	N45°W 46.43'
Concrete Monument	North 33.00'
C/L E-W blacktop road is North 10' ±	



Signed by Kirk Breitels  
Surveyor's Michigan License No. 30077

Date 2/25/99