

\$7.00  
\$2.00

MAY 22 2000

# KENT COUNTY REMONUMENTATION

SECTION

## LAND CORNER RECORDATION CERTIFICATE Filing Requirement of Act 74, Mich. P.A. 1970

For corners in

KENT COUNTY  
(County)

Located In:

Corner Code #

- 1. Public Land Survey
- 2. Property Controlling in Section
- 3. Miscellaneous Property in Sec.

T 10 N R 12 W  
 T \_\_\_ R \_\_\_  
 T \_\_\_ R \_\_\_  
 T \_\_\_ R \_\_\_  
 S \_\_\_ T \_\_\_ R \_\_\_  
 S \_\_\_ T \_\_\_ R \_\_\_  
 S \_\_\_ T \_\_\_ R \_\_\_  
 S \_\_\_ T \_\_\_ R \_\_\_

Tyrone Twp.  
J-8  
 \_\_\_\_\_  
 \_\_\_\_\_  
 \_\_\_\_\_  
 \_\_\_\_\_  
 \_\_\_\_\_  
 \_\_\_\_\_  
 \_\_\_\_\_

STATE OF MICHIGAN  
COUNTY OF KENT  
RECEIVED FOR RECORD

1999 DEC 17 AM 8:01

REG. OF DEEDS

*[Signature]*

11626

Register of Deeds Stamp & File Number

4. Lot No. \_\_\_\_\_, Recorded Plat \_\_\_\_\_  
 5. Private Claims \_\_\_\_\_

I, Kirk Breitels, in a field survey on Nov. 30, 1999 do hereby state that under requirements of P.A. 74, Michigan P.A. of 1970, the corner points mentioned in lines 1 and 2 above were in conformance with regulations and rules therefore as required in the current manual of survey instructions of the United States Department of the Interior, Bureau of Land Management or by a decree of a Court of Law and /or that the corner points mentioned in lines 3, 4 and 5 above were in conformance with the rules of the Michigan Board of Land Surveyors or by a Decree of a Court of Law; established, re-established, monumented, recovered, found as expressed below:

NOTE: Not more than 2 corners, all in the same town and range, may be recorded on this certificate.

	A	B	C	D	E	F	G	H	I	J	K	L	M
1													
2		6		5		4		3		2		1	
3													
4		7		8		9		10		11		12	
5													
6		19		17		16		15		14		13	
7													
8		19		20		21		22		23		24	
9													
10		30		29		28		27		26		25	
11													
12		31		32		33		34		35		36	
13													

### A. Description of original monument and accessories and/or subsequent restoration:

J-8 1837	GLO	Not Set
1903	Williams & Works	Set Iron 2633.5' East of W 1/4 corner
	Kent Co. Wits	No information

P.A. 345 1990 KENT COUNTY  
 PEER APPROVED 12/02/99  
 CHAIRMAN *[Signature]*

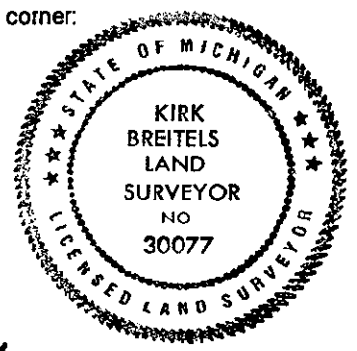
### B. Description of corner evidence found and/or method applied in restoring or reestablishing corner:

J-8 Did not find Iron as set by Williams & Works in 1903. Found 1/8 corner and Irons (Irons are old) for 6 parcels in the SW 1/4 of the NW 1/4. Measured 1317.26' East (deed = 1315.82') from W 1/4 corner to RR Spike found at 1/8 corner. This 1/8 corner combined with Iron found at Central 1/8 corner of the NW 1/4 fits Irons for parcels to North. ESTABLISHED Center of Section by doubling distance and extending line East from RR Spike found at 1/8 corner. 1/2 mile measures 2634.52' (1903 WW = 2633.5). Angle at S 1/4 corner for description in the SE 1/4 corner using this Center measures within 00°00'45" of deed angle. A property line in the SE 1/4 as staked 660' south of the East 1/4 corner and running East (by deed = parallel to E-W 1/4 line) creates a bearing that is an average ± of the North and South section line bearings. Center of Section as established is 00°12' different than this property line. The Center of Section as ESTABLISHED is 4.3' North and 2.1' East of the Intersection of 1/4 lines. The Center of Section as ESTABLISHED is accepted by me and is generally accepted by professional surveyors as the best available evidence of the position of the corner.

### C. Description of monument for corner and accessories established to perpetuate locating the position of the corner:

J-8 Set Standard Kent County Monument as ESTABLISHED

Nail & KC Remon. tag W. side	10" Maple	S10°E	41.13'
Nail & KC Remon. tag NE side	18" Oak	N30°W	13.99'
Nail & KC Remon. tag S. side	26" Oak	N70°E	43.78'
Nail & KC Remon. tag N. side	14" Poplar	S65°E	31.66'
Capped Rerod (Traverse Point)		S25°W	4.81



Signed by *[Signature]*  
 Surveyor's Michigan License No. 30077

Date 12/15/99