

KENT COUNTY REMONUMENTATION

SECTION

LAND CORNER RECORDATION CERTIFICATE  
Filing Requirement of Act 74, Mich. P.A. 1970

For corners in

KENT COUNTY

(County)

Located In:

Corner Code #

Tyrone Twp.

1. Public Land Survey

T 10N R 12W

L-2

T R

T R

T R

T R

2. Property Controlling in Section

S T R

S T R

3. Miscellaneous Property in Sec.

S T R

S T R

REG. OF DEEDS

STATE OF MICHIGAN  
COUNTY OF KENT  
RECEIVED FOR RECORD  
1999 MAR 24 AM 8:03

11193

Register of Deeds Stamp & File Number

4. Lot No. \_\_\_\_\_, Recorded Plat \_\_\_\_\_

5. Private Claims \_\_\_\_\_

I, Kirk Breitels, in a field survey on Jan. 22, 19 99 do hereby state that under requirements of P.A. 74, Michigan P.A. of 1970, the corner points mentioned in lines 1 and 2 above were in conformance with regulations and rules therefore as required in the current manual of survey instructions of the United States Department of the Interior, Bureau of Land Management or by a decree of a Court of Law and/or that the corner points mentioned in lines 3, 4 and 5 above were in conformance with the rules of the Michigan Board of Land Surveyors or by a Decree of a Court of Law; established, re-established, monumented, recovered, found as expressed below:

NOTE: Not more than 2 corners, all in the same town and range, may be recorded on this certificate.

A	B	C	D	E	F	G	H	I	J	K	L	M
1												
2	6		5		4		3		2			1
3												
4	7		8		9		10		11			12
5												
6	10		17		16		15		14			13
7												
8	19		20		21		22		23			24
9												
10	30		29		28		27		26			25
11												
12	31		32		33		34		35			36
13												

A. Description of original monument and accessories and/or subsequent restoration:

L-2 1837	GLO	Whitcomb	Not set
1895-1916	Williams & Works		Set & used corner
1973	LCRC #375	Bonnema	Found 1" Iron
1993	LCRC #6843	Bonnema	Set Kent County Monument

P.A. 345 1990 KENT COUNTY  
PEER APPROVED 2/25/99  
CHAIRMAN Harry Huber

The position of this corner was previously approved by the Kent County Remonumentation Peer Group, monumented by Douglas W. Bonnema on 9-7-93 and was recorded per LCRC #6843.

B. Description of corner evidence found and/or method applied in restoring or reestablishing corner:

L-2 Found Kent County Monument (Harrison) per witnesses from above LCRC as set by Douglas W. Bonnema in place of the 1" Iron he found. Said Iron checks with Williams & Works information and LCRC #375.

LCRC #6843

Nail & Remon. tag W. side 26" Oak	S10°W	56.10'
Nail & Remon. tag SE side Tw. 24" Oak	S5°?	61.98'
Nail & Remon. tag SW side P. Pole	N45°W	51.52'
Nail & Remon. tag NW side 14" Walnut	N31°E	31.76'
Nail & Remon. tag NW side 32" Walnut	N70°E	69.93'

C/L E-W gravel road is North 1' ±

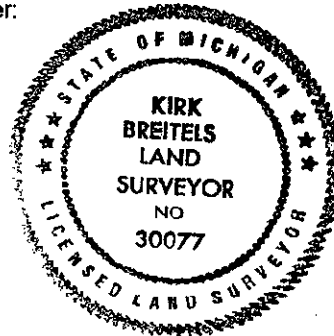
The selected location is accepted by me and is generally accepted by professional surveyors as the best available evidence of the position of the corner.

C. Description of monument for corner and accessories established to perpetuate locating the position of the corner:

L-2 Standard Kent County Monument

Nail & KC Remon. tag W. side 28" Oak	S10°W	56.23'
Nail & KC Remon. tag SE side Tw. 24" Oak	S60°E	61.98'
Nail & KC Remon. tag SW side P. Pole	N45°W	51.57'
Nail & KC Remon. tag NW side 16" Walnut	N31°E	31.80'
Nail & KC Remon. tag NW side 32" Walnut	N70°E	69.96'

C/L E-W gravel road is North 1' ±



Signed by Kirk Breitels

Date 2/25/99

Surveyor's Michigan License No. 30077