

\$7.00
\$2.00

1997 4 6-2893

KENT COUNTY REMONUMENTATION

SECTION

LAND CORNER RECORDATION CERTIFICATE
Filing Requirement of Act 74, Mich. P.A. 1970

STATE OF MICHIGAN
COUNTY OF KENT
RECEIVED FOR RECORD
1999 MAR 24 AM 9:03

REG. OF DEEDS

11194

Register of Deeds Stamp & File Number

For corners in

KENT COUNTY

(County)

Located In:

Corner Code #

Tyrone Twp.

1. Public Land Survey

T 10N R 12W

L-3

T R

T R

T R

T R

2. Property Controlling in Section

S T R

S T R

3. Miscellaneous Property in Sec.

S T R

S T R

4. Lot No. _____, Recorded Plat _____

5. Private Claims _____

I, Kirk Breitels, in a field survey on Jan. 21, 19 99 do hereby state that under requirements of P.A. 74, Michigan P.A. of 1970, the corner points mentioned in lines 1 and 2 above were in conformance with regulations and rules therefore as required in the current manual of survey instructions of the United States Department of the Interior, Bureau of Land Management or by a decree of a Court of Law and /or that the corner points mentioned in lines 3, 4 and 5 above were in conformance with the rules of the Michigan Board of Land Surveyors or by a Decree of a Court of Law; established, re-established, monumented, recovered, found as expressed below:

NOTE: Not more than 2 corners, all in the same town and range, may be recorded on this certificate.

	A	B	C	D	E	F	G	H	I	J	K	L	M
1													
2	6		5		4		3		2		1		
3													
4	7		8		9		10		11		12		
5													
6	18		17		16		15		14		13		
7													
8	19		20		21		22		23		24		
9													
10	30		29		28		27		26		25		
11													
12	31		32		33		34		35		36		
13													

A. Description of original monument and accessories and/or subsequent restoration:

L-3 1837	GLO	Whitcomb	Set Post
	Kent Co. Wits		Iron
1971	LCRC #90	Chambers	"T" Iron
1983	LCRC #3437	Bueche	Set Kent County Monument
1991	LCRC #6032	Byl	Kent County Monument

P.A. 345 1990 KENT COUNTY
PEER APPROVED 2/25/99
CHAIRMAN [Signature]

The position of this corner was previously approved by the Kent County Remonumentation Peer Group, monumented by John C. Bueche on 5-24-83 and was recorded per LCRC #3437.

B. Description of corner evidence found and/or method applied in restoring or reestablishing corner:

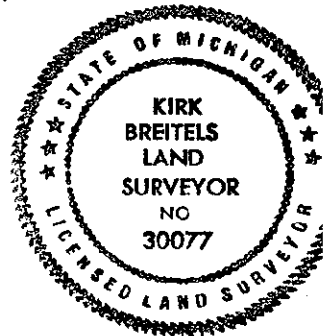
L-3 Found Kent County Monument (Harrison) per witnesses from above LCRC as set by John C. Bueche in place of the 1" Well Point he found. Said Well Point checks with LCRC #90 and Kent Co. Wits.
LCRC #3437 LCRC #6032

Nail & Remon. tag 14" Hickory	S65°E	51.85'	Nail & Remon. tag 16" Hickory	S65°E	51.85'
Nail & Remon. tag 36" Cottonwood	N50°E	59.95'	Nail & Remon. tag 40" Cottonwood	N50°E	59.95'
Nail & Remon. tag 8" Maple	S15°W	26.46'	Nail & Remon. tag 12" Maple	S15°W	26.46'
Nail & Remon. tag dbl. 20" Maple	N65°W	93.15'	Nail & Remon. tag dbl. 20" Maple	N65°W	93.10'
Nail & Remon. tag 4-16" Maples	S85°W	118.84'	Nail & Remon. tag 4 8"-18" Maples	S85°W	118.75'
Iron	South	23.80'			

The selected location is accepted by me and is generally accepted by professional surveyors as the best available evidence of the position of the original corner.

C. Description of monument for corner and accessories established to perpetuate locating the position of the corner:

L-3 Standard Kent County Monument		
Nail & KC Remon: tag N. side 16" Hickory	S65°E	51.85'
Nail & KC Remon. tag NW side 40" Stump	N50°E	60.00'
Nail & KC Remon. tag W. side 12" Maple	S15°W	26.46'
Nail & KC Remon. tag S. side dbl. 24" Maple	N65°W	93.10'
Nail & KC Remon. tag N. side 18" Oak	S60°W	65.23'
Fence line to South is East 2'		
C/L E-W gravel road is North 2'		



Signed by [Signature]
Surveyor's Michigan License No. 30077

Date 2/25/99