

SECTION

KENT COUNTY REMONUMENTATION

LAND CORNER RECORDATION CERTIFICATE
Filing Requirement of Act 74, Mich. P.A. 1970

For corners in

KENT COUNTY

(County)

Located in:

Corner Code #

Tyrone Twp.

1. Public Land Survey

T 10N R 12W

L-5

T R

T R

T R

T R

2. Property Controlling
in Section

S T R

S T R

3. Miscellaneous
Property in Sec.

S T R

S T R

REG. OF DEEDS

[Signature]

STATE OF MICHIGAN
COUNTY OF KENT
RECEIVED FOR RECORD
1999 MAR 24 AM 8:03

11195

Register of Deeds Stamp & File Number

4. Lot No. _____, Recorded Plat _____

5. Private Claims _____

I, Kirk Breitels, in a field survey on Jan. 18, 19 99 do hereby state that under requirements of P.A. 74, Michigan P.A. of 1970, the corner points mentioned in lines 1 and 2 above were in conformance with regulations and rules therefore as required in the current manual of survey instructions of the United States Department of the Interior, Bureau of Land Management or by a decree of a Court of Law and /or that the corner points mentioned in lines 3, 4 and 5 above were in conformance with the rules of the Michigan Board of Land Surveyors or by a Decree of a Court of Law; established, re-established, monumented, recovered, found as expressed below:

NOTE: Not more than 2 corners, all in the same town and range, may be recorded on this certificate.

A	B	C	D	E	F	G	H	I	J	K	L	M
1												
2	6		5		4		3		2		1	
3												
4	7		8		9		10		11		12	
5												
6	18		17		16		15		14		13	
7												
8	19		20		21		22		23		24	
9												
10	30		29		28		27		26		25	
11												
12	31		32		33		34		35		36	
13												

A. Description of original monument and accessories and/or subsequent restoration:

L-5	1837	GLO	Whitcomb	Set Post
	1965	Kent Co. Wits		1" Iron
	1979	LCRC #1247	Wickham	1" Iron
	1983	LCRC #3438	Bueche	Set Kent County Monument
	1985	LCRC #4194	Brintnall	Kent County Monument
	1991	LCRC #6033	Byl	Kent County Monument

P.A. 345 1990 KENT COUNTY
PEER APPROVED 2/25/99
CHAIRMAN [Signature]

The position of this corner was previously approved by the Kent County Remonumentation Peer Group, monumented by John C. Bueche on 5-17-85 and was recorded per LCRC #4194.

B. Description of corner evidence found and/or method applied in restoring or reestablishing corner:

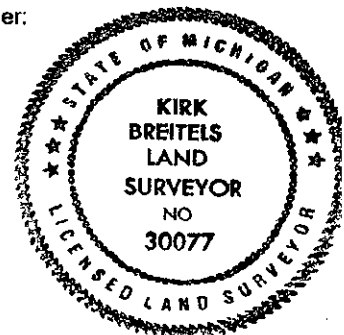
L-5 Found Kent County Monument (Harrison) per witnesses from above LCRC as set by John C. Bueche in place of the 1" Iron over a Boat Spike inside a 1" Iron he found. All check with Kent Co. Wits. and LCRC #1247.

LCRC #3438		LCRC #4194		LCRC #6033	
12" Pine	S70°W 92.55'	ENE 133.86' 18" Poplar		15" Pine	S70°W 92.48'
30" Oak	N70°W 99.24'	ESE 56.33' 6" Willow		30" Oak	N70°W 99.82'
Dbl 30" Oak	S75°W 118.19'	WSW 118.20' Tw. 24" Oak		Dbl. 30" Oak	S75°W 118.12'
14" Poplar	N80°E 133.88'	WNW 99.25' 20" Oak		14" Poplar	N80°E 133.77'
C/L blacktop E-W is N. 1'				8" Willow	S60°E 56.09'

The selected location is accepted by me and is generally accepted by professional surveyors as the best available evidence of the position of the original corner.

C. Description of monument for corner and accessories established to perpetuate locating the position of the corner:

L-5 Standard Kent County Monument			
Nail & KC Remon. tag N. side 18" Pine	S70°W	92.36'	
Nail & KC Remon. tag S. side 30" Oak	N70°W	99.82'	
Nail & KC Remon. tag N. side dbl. 30" Oak	S75°W	118.12'	
Nail & KC Remon. tag S. side 16" Poplar	N80°E	133.81'	
Nail & KC Remon. tag N. side 10" Willow	S60°E	56.17'	



Signed by [Signature]

Date 2/25/99

Surveyor's Michigan License No. 30077