

SURVEY & RECORDATION

MAY 28 2000

57.00
32.00

SECTION

KENT COUNTY REMONUMENTATION

LAND CORNER RECORDATION CERTIFICATE
Filing Requirement of Act 74, Mich. P.A. 1970

REG. OF DEEDS

[Signature]

STATE OF MICHIGAN
COUNTY OF KENT
RECEIVED FOR RECORD
1999 NOV -4 AM 8:37

For corners in

KENT COUNTY
(County)

Located in: Corner Code #
Tyrone Twp.
T10N R 12W L-10
T R
T R
T R
S T R
S T R
S T R
S T R

- 1. Public Land Survey
- 2. Property Controlling in Section
- 3. Miscellaneous Property in Sec.

11509

Register of Deeds Stamp & File Number

- 4. Lot No. , Recorded Plat
- 5. Private Claims

I, Kirk Breitels, in a field survey on Sept. 17, 1999 do hereby state that under requirements of P.A. 74, Michigan P.A. of 1970, the corner points mentioned in lines 1 and 2 above were in conformance with regulations and rules therefore as required in the current manual of survey instructions of the United States Department of the Interior, Bureau of Land Management or by a decree of a Court of Law and/or that the corner points mentioned in lines 3, 4 and 5 above were in conformance with the rules of the Michigan Board of Land Surveyors or by a Decree of a Court of Law; established, re-established, monumented, recovered, found as expressed below:

NOTE: Not more than 2 corners, all in the same town and range, may be recorded on this certificate.

	A	B	C	D	E	F	G	H	I	J	K	L	M
1													
2	6		5		4		3		2		1		
3													
4	7		8		9		10		11		12		
5													
6	18		17		16		15		14		13		
7													
8	19		20		21		22		23		24		
9													
10	30		29		28		27		26		25		
11													
12	31		32		33		34		35		36		
13													

A. Description of original monument and accessories and/or subsequent restoration:

- L-10 1837 GLO Williams & Works Kent Co. Wits Not Set No information No information
- 1985 LCRC #4311 Bissell Set Concrete Monument at intersection of 1/4 lines South 48.03' to spike in 10" Tri. Cherry S56°W 16.15' to spike in 4" Maple North 19.24' to spike in 6" Oak N34°E 17.15' to spike in 6" Oak East 105' ± to Center trail road

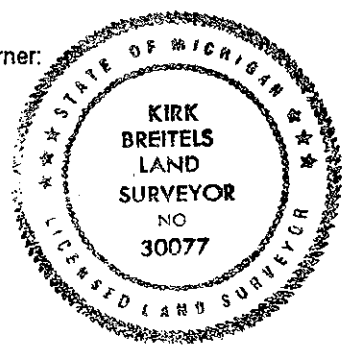
P.A. 345 1990 KENT COUNTY
PEER APPROVED 9/23/99
CHAIRMAN *[Signature]*

B. Description of corner evidence found and/or method applied in restoring or reestablishing corner:

- L-10 Found DNR Concrete Monument per LCRC #4311 witnesses.
Said DNR Concrete Monument is 0.3' W. & 0.3' N. of intersection of 1/4 lines.
The DNR Concrete Monument is accepted by me and is generally accepted by professional surveyors as the best available evidence of the position of the corner.

C. Description of monument for corner and accessories established to perpetuate locating the position of the corner:

- L-10 DNR Concrete Monument
Spike & DNR tag E. side 6" Oak N00°E 19.22'
Spike & DNR tag E. side 4" Oak N34°E 17.12'
Nail & KC Remon. tag NW side 8" Maple S56°W 16.20'
Nail & KC Remon. tag E. side Tri. 14" Cherry S00°E 48.03'
Nail & KC Remon. tag NE side 12" Poplar S30°E 21.66'



Signed by *[Signature]*
Surveyor's Michigan License No. 30077

Date 10/20/99