

28 2000

KENT COUNTY REMONUMENTATION

LAND CORNER RECORDATION CERTIFICATE Filing Requirement of Act 74, Mich. P.A. 1970

57.00
52.00

SECTION

For corners in

KENT COUNTY
(County)

Located In:

Corner Code #

1. Public Land Survey

T 10NR 12W M-7 Tyrone
T R Common
~~T 10NR 11W A-7 Spohn~~

2. Property Controlling in Section

S T R _____
S T R _____

3. Miscellaneous Property in Sec.

S T R _____
S T R _____

4. Lot No. _____, Recorded Plat _____
5. Private Claims _____

REG. OF DEEDS

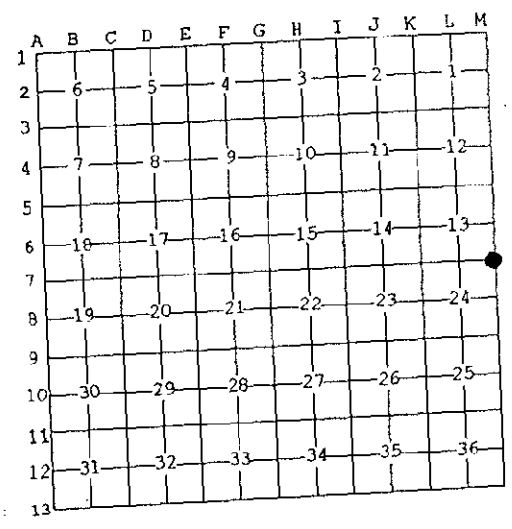
1999 NOV -4 AM 8:37
STATE OF MICHIGAN
COUNTY OF KENT
RECEIVED FOR RECORD

11511

Register of Deeds Stamp & File Number

I, Kirk Breitels, in a field survey on Sept. 23, 19 99 do hereby state that under requirements of P.A. 74, Michigan P.A. of 1970, the corner points mentioned in lines 1 and 2 above were in conformance with regulations and rules therefore as required in the current manual of survey instructions of the United States Department of the Interior, Bureau of Land Management or by a decree of a Court of Law and for that the corner points mentioned in lines 3, 4 and 5 above were in conformance with the rules of the Michigan Board of Land Surveyors or by a Decree of a Court of Law; established, re-established, monumented, recovered, found as expressed below:

NOTE: Not more than 2 corners, all in the same town and range, may be recorded on this certificate.



A. Description of original monument and accessories and/or subsequent restoration:

M-7 1837	GLO	Whitcomb	Set Post
	Kent Co. Wits		Leaded Stone
1981	LCRC #1621	Hackbardt	Leaded Stone
1983	LCRC #3246	Byl	Set Kent County Monument
1991	LCRC #6043	Byl	Kent County Monument

P.A. 345 1990 KENT COUNTY
PEER APPROVED 9/23/99
CHAIRMAN Harry Kube

The position of this corner was previously approved by the Kent County Remonumentation Peer Group, monumented by William R. Byl on 2-22-83 and was recorded per LCRC #3246.

B. Description of corner evidence found and/or method applied in restoring or reestablishing corner:

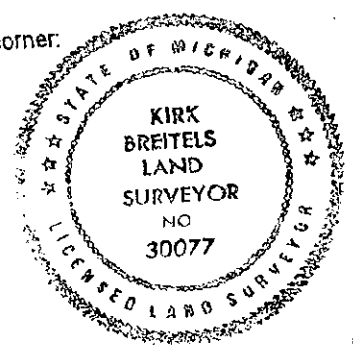
M-7 Found Kent County Monument (Harrison) per witnesses from above LCRC as set by William R. Byl, grouted to the top of the Leaded Stone he found. Said Leaded Stone checks with Kent Co. Wits. and LCRC #1621.

LCRC #3246	Nail & Remon. tag 18" Maple N50°W 46.80'
	Nail & Remon. tag 24" Oak S90°W 58.52'
	Nail & Remon. tag 24" Oak S55°W 89.36'
	Nail & Remon. tag 30" Oak N60°E 56.15'
LCRC #6043	Nail & Remon. tag 24" Maple N50°W 46.80'
	Nail & Remon. tag 30" Oak S90°W 58.48'
	Nail & Remon. tag 30" Oak S55°W 89.41'
	Nail & Remon. tag 36" Oak N60°E 56.18'

The selected location is accepted by me and is generally accepted by professional surveyors as the best available evidence of the position of the original corner.

C. Description of monument for corner and accessories established to perpetuate locating the position of the corner:

M-7 Standard Kent County Monument	
Nail & KC Remon. tag S. side 24" Maple	N50°W 46.80'
Nail & KC Remon. tag N. side 34" Oak	S55°W 89.28'
Nail & KC Remon. tag N. side 40" Oak	N60°E 56.18'
Nail & KC Remon. tag W. side 18" Oak	S20°W 84.20'
In C/L roads N-S-E ±	



Signed by Kirk Breitels
Surveyor's Michigan License No. 30077

Date 10/28/99