

SURVEY & REMONUMENTATION

\$7.00
\$2.00

MAR 08 1999

KENT COUNTY REMONUMENTATION

LAND CORNER RECORDATION CERTIFICATE
Filing Requirement of Act 74, Mich. P.A. 1970

STATE OF MICHIGAN
COUNTY OF KENT
RECEIVED FOR RECORD
98 MAR -5 AM 8:31
REG. OF DEEDS
Lucy Hand

For corners in SECTION

KENT COUNTY
(County)

Located In: Corner Code #

- 1. Public Land Survey ~~T 9N R 12W~~ M-1 Sparta
T R common with
~~T 9N R 11W~~ A-1 Algoma
T 10N R 12W M-13 Tyrone
- 2. Property Controlling in Section S ~~T 10N R 11W~~ A-13 Solon
S T R
- 3. Miscellaneous S T R
Property in Sec. S T R

10495

Register of Deeds Stamp & File Number

- 4. Lot No. _____, Recorded Plat _____
- 5. Private Claims _____

I, Kirk Breitels, in a field survey on Jan. 5, 1998 do hereby state that under requirements of P.A. 74, Michigan P.A. of 1970, the corner points mentioned in lines 1 and 2 above were in conformance with regulations and rules therefore as required in the current manual of survey instructions of the United States Department of the Interior, Bureau of Land Management or by a decree of a Court of Law and/or that the corner points mentioned in lines 3, 4 and 5 above were in conformance with the rules of the Michigan Board of Land Surveyors or by a Decree of a Court of Law, established, re-established, monumented, recovered, found as expressed below:

NOTE: Not more than 2 corners, all in the same town and range, may be recorded on this certificate.

A	B	C	D	E	F	G	H	I	J	K	L	M
1												
2	6		5		4		3		2		1	
3												
4	7		8		9		10		11		12	
5												
6	18		17		16		15		14		13	
7												
8	19		20		21		22		23		24	
9												
10	30		29		28		27		26		25	
11												
12	31		32		33		34		35		36	
13												

A. Description of original monument and accessories and/or subsequent restoration:

- M-1 1837 GLO Brookfield Set Post
- 1939 Kent Co. Wits Concrete Monument
- 1949 Williams & Works Concrete Monument
- 1992 LCRC #6611 Bueche Set Kent County Monument

P.A. 345 1990 KENT COUNTY
PEER APPROVED 2/19/98
CHAIRMAN *Harry Bueche*

The position of this corner was previously approved by the Kent County Remonumentation Peer Group, monumented by John C. Bueche on 10-12-92 and was recorded per LCRC#6611.

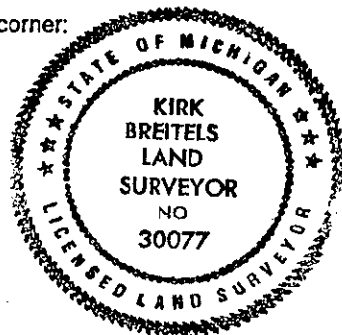
B. Description of corner evidence found and/or method applied in restoring or reestablishing corner:

- M-1 Found Kent County Monument (Harrison) per witnesses from above LCRC as set by John C. Bueche in place of the Concrete Monument he found. Concrete Monument checks with Kent Co. Wits. and Williams & Works information. LCRC #6611
- Nail & Remon. tag SW side 10" Oak N45°W 7.89'
- Nail & Remon. tag W. side 18" Oak N35°E 26.69'
- Nail & Remon. tag SW side 16" Oak S40°E 32.25'
- Nail & Remon. tag SW side 18" Oak S30°E 44.01'

The selected location is accepted by me and is generally accepted by professional surveyors as the best available evidence of the position of the original corner.

C. Description of monument for corner and accessories established to perpetuate locating the position of the corner:

- M-1 Standard Kent County Monument
- Nail & KC Remon. tag SW side 12" Oak N45°W 7.88'
- Nail & KC Remon. tag W. side 20" Oak N35°E 26.67'
- Nail & KC Remon. tag SW side 18" Oak S40°E 31.97'
- Nail & KC Remon. tag SW side 20" Oak S30°E 43.83'



Signed by *Kirk Breitels*
Surveyor's Michigan License No. 30077

Date 2/19/98