

7/20/99

OFFICE & REGISTRATION  
MAY 2 4 2000

KENT COUNTY REMONUMENTATION

LAND CORNER RECORDATION CERTIFICATE  
Filing Requirement of Act 74, Mich. P.A. 1970

Seg 2

1995 DEC 30 AM 9:20  
PROPERTY OF KENT COUNTY  
RECEIVED FOR RECORD

SECTION

For corners in

KENT COUNTY  
(County)

Located In:

Corner Code #

Tyrone Twp.  
F-10

1. Public Land Survey

T 10N R 12W  
T R  
T R  
T R

2. Property Controlling in Section

S T R  
S T R  
S T R  
S T R

3. Miscellaneous Property in Sec.

4. Lot No. \_\_\_\_\_, Recorded Plat \_\_\_\_\_  
5. Private Claims \_\_\_\_\_

REG. OF DEEDS

11681

Register of Deeds Stamp & File Number

I, Kirk Breitels, in a field survey on Nov. 23, 19 99 do hereby state that under requirements of P.A. 74, Michigan P.A. of 1970, the corner points mentioned in lines 1 and 2 above were in conformance with regulations and rules therefore as required in the current manual of survey instructions of the United States Department of the Interior, Bureau of Land Management or by a decree of a Court of Law and for that the corner points mentioned in lines 3, 4 and 5 above were in conformance with the rules of the Michigan Board of Land Surveyors or by a Decree of a Court of Law; established, re-established, monumented, recovered, found as expressed below:

	A	B	C	D	E	F	G	H	I	J	K	L	M
1													
2	6		5		4		3		2		1		
3													
4	7		8		9		10		11		12		
5													
6	18		17		16		15		14		13		
7													
8	19		20		21		22		23		24		
9													
10	30		29		28		27		26		25		
11													
12	31		32		33		34		35		36		
13													

NOTE: Not more than 2 corners, all in the same town and range, may be recorded on this certificate.

A. Description of original monument and accessories and/or subsequent restoration:

- F-10 Kent County Monument, LCRC #8747
  - Nail & KC Remon. tag E. side cluster 10" Maple N05°W 53.11'
  - Nail & KC Remon. tag S. side P. Pole S80°E 38.87'
  - Nail & KC Remon. tag SW side Twin 12" Elm S40°E 81.38'
  - Nail & KC Remon. tag SE side 15" Cherry S30°W 103.06'
  - Remains of N-S fence is 6' West ±
  - E-W power lines are 8' South ±

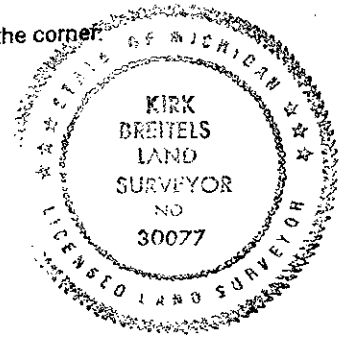
P.A. 345 1990 KENT COUNTY  
PEER APPROVED 10/26/95  
CHAIRMAN [Signature]

B. Description of corner evidence found and/or method applied in restoring or reestablishing corner:

- F-10 Found BROKEN Kent County Monument
  - Fd. Nail & KC Remon. E. side cluster 10" Maple N05°W 53.14'
  - Fd. Nail & KC Remon. S. side P. Pole S80°E 38.85'
  - Fd. Nail & KC Remon. SW side Twin 12" Elm S40°E 81.40'
  - E-W power lines are 8' South ±

C. Description of monument for corner and accessories established to perpetuate locating the position of the corner:

- F-10 Removed and Replaced Standard Kent County Monument
  - Nail & KC Remon. tag E. side cluster 10" Maple N05°W 53.14'
  - Nail & KC Remon. tag S. side P. Pole S80°E 38.85'
  - Nail & KC Remon. tag SW side Twin 12" Elm S40°E 81.40'
  - Nail & KC Remon. tag SE side 18" Cherry S30°W 113.11'
  - E-W power lines are 8' South ±
  - Corner is at East edge of field drive and West edge of corn field
  - C/L field drive to East is 12' North ±



Signed by [Signature]  
Surveyor's Michigan License No. 30077

Date 12/28/99