

NOV 23 1999

SECTION

LAND CORNER RECORDATION CERTIFICATE
Filing Requirement of Act 74, Mich. P.A. 1970

REGISTER'S OFFICE }
County of Keweenaw } SS
Received for Record, the 12th
day of November A.D. 1996
at 9:20 o'clock A.M., and Recorded
in Liber 1 of LCR
on page 147
Manly J. Bergquist
Register of Deeds

For corners in
Keweenaw

(County)

Located In:

Corner Code #

- 1. Public Land Survey

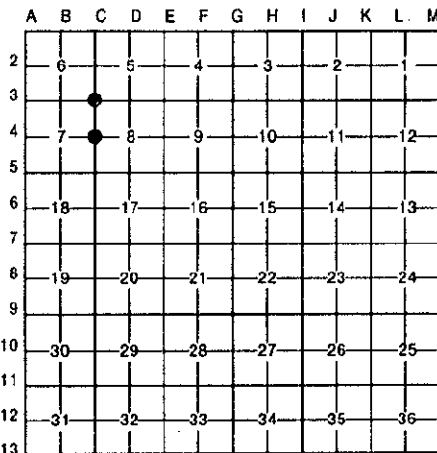
T	57N	R	30W	C3
T	57N	R	30W	C4
T		R		
T		R		
- 2. Property Controlling in Section

S		T	R	
S		T	R	
- 3. Miscellaneous Property in Sec.

S		T	R	
S		T	R	

Register of Deeds Stamp & File Number

- 4. Lot No. _____, Recorded Plat _____
- 5. Private Claims _____



I, Steven C. Hein, in a field survey on June 28, 1996, 19_____, do hereby certify that under requirements of P.A. 74, Michigan P.A. of 1970, the corner points mentioned in lines 1 and 2 above were in conformance with regulations and rules therefore as required in the current manual of survey instructions of the United States Department of the Interior, Bureau of Land Management or by a decree of a Court of Law and/or that the corner points mentioned in lines 3, 4 and 5 above were in conformance with the rules of the Michigan Board of Land Surveyors or by a Decree of a Court of Law; established, re-established, monumented, re-monumented, recovered, found as expressed below:

NOTE: Not more than 4 corners, all in the same town and range, may be recorded on this certificate.

A. Description of original monument and accessories and/or subsequent restoration:

- (C-3) From Original Notes: 80.00 Set post corner of Sections 5, 6, 7 & 8; Sugar 12 N4W 27; Yellow Birch 14 S31E 5: No evidence of original corner or accessories.
- (C-4) From Original Notes: 40.00 Set qr. Section post; Lynn 10 S74E 24; Sugar 18 N87W 33: No evidence of original corner or accessories.

B. Description of corner evidence found and/or method applied in restoring or reestablishing corner:

- (C-3) Found 7/8" pin next to root of 32" Y. Birch, witnesses as recorded in L.C.R. Liber 1, Page 94: 12" H. Maple N60E 17.88'; 4" H. Maple S26W 9.04'; 8" H. Maple N66W 12.16'
- (C-4) Found 1 1/4" pipe as recorded in L.C.R. Liber 1, Page 94: Witnesses: 12" H. Maple North 11.90'; 10" H. Maple N84E 4.24'; 5" H. Maple S10E 14.49'; 9" Basswood N74W 26.72'

Ratified by Peer Group
In accordance with P.A. 345
Co. Rep. James M. Hubert
Date 10/15/96

C. Description of monument for corner and accessories established to perpetuate locating the position of the corner:

- | | |
|--|--|
| (C-3) Accepted location of 7/8" pin,
Replaced pin with 4" Remon. Brass Cap
stamped for corner
Witnesses:
13" H. Maple N60E 17.88'
4" H. Maple S26W 9.04'
8" H. Maple N66W 12.16'
(new) 32" Y. Birch S25E 3.13'
Note: New wit. has tag #32336 | (C-4) Accepted location of 1 1/4" pipe,
Replaced pipe with 4" Remon. Brass Cap
stamped for corner
Renewed Witnesses:
14" H. Maple North 11.86'(tag #32336)
11" H. Maple N84E 4.24'(tag #32336)
6" H. Maple S10E 14.49'(tag #32336)
10" Basswood N74W 26.66'(old nail) |
|--|--|



Signed by Steven C. Hein Date SEPTEMBER 13, 1996
Surveyor's Michigan License No. 32336