

SURVEY & REMONUMENTATION

APR 28 1995

COMMISSION

LAND CORNER RECORDATION CERTIFICATE
Filing Requirement of Act 74, Mich. P.A. 1970

For corners in

Keweenaw
 (County)

Located In:

Corner Code #

- 1. Public Land Survey

T	<u>57N</u>	R	<u>32W</u>
T	<u>57N</u>	R	<u>32W</u>
T		R	
T		R	
- 2. Property Controlling in Section

S		T		R	
S		T		R	
- 3. Miscellaneous Property in Sec.

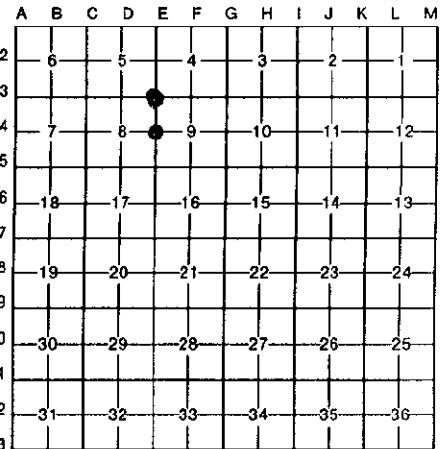
S		T		R	
S		T		R	

E-4 ✓
E-3

REGISTER'S OFFICE }
 County of Keweenaw } SS
 Received for Record, the 15th
 day of December A.D. 1994
 at 3:00 o'clock P.M., and Recorded
 in Liber 1 of LCR
 on page 125
Monica V. Bergquist
 Register of Deeds

Register of Deeds Stamp & File Number

- 4. Lot No. _____, Recorded Plat _____
- 5. Private Claims _____



I, John I. Haataja, in a field survey on November 8, 19 94
do hereby certify that under requirements of P.A. 74, Michigan P.A. of 1970, the corner points mentioned in lines 1 and 2 above were in conformance with regulations and rules therefore as required in the current manual of survey instructions of the United States Department of the Interior, Bureau of Land Management or by a decree of a Court of Law and/or that the corner points mentioned in lines 3, 4 and 5 above were in conformance with the rules of the Michigan Board of Land Surveyors or by a Decree of a Court of Law; established, re-established, monumented, re-monumented, recovered, found as expressed below:

NOTE: Not more than 4 corners, all in the same town and range, may be recorded on this certificate.

A. Description of original monument and accessories and/or subsequent restoration:

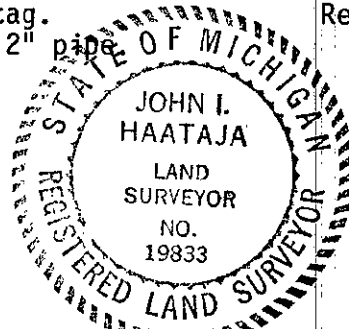
E-4 1/4 Corner between Sec. 8 & 9.
 Orig. Notes: Wood post
 Cedar 12" S 70° W 5 lks.
 Cedar 16" N 12° E 15 lks.

E-3 Sec. Corner 4,5,8 & 9. Orig. Notes:
 Wood Post.
 Sugar Maple 14" N 50° E 11 lks.
 Sugar Maple 16" S 40° W 21 lks.
 Old Calumet & Hecla Mining Company records indicate there is an iron pipe marking corner.

B. Description of corner evidence found and/or method applied in restoring or reestablishing corner:

E-4 1/4 Corner between Sec. 8 & 9.
 Found 2" pipe and squared wood post with old Forest Service Location tag. Also Calumet & Hecla Location tag. Restored corner at location of 2" pipe

E-3 Sec. Corner 4,5,8 & 9.
 No trace of iron pipe only old squared maple post and State Location tag. Restored corner at squared maple post.



Ratified by Peer Group
 In accordance with P.A. 345
 Co. Rep. *James M. Hahle*
 Date 11/16/94

C. Description of monument for corner and accessories established to perpetuate locating the position of the corner:

E-4 1/4 Corner between Sec. 8 & 9.
 Set 1" iron pipe with brass cap at location of 2" pipe which is accepted as a careful and faithful perpetuation of the position of the original corner.
 4" Cedar N 46° E 7.20'
 3" Cedar S 84° E 7.78'
 6" Cedar S 38° W 4.61'
 8" W. Spruce N 10° W 14.84'

E-3 Sec. Corner 4,5,8 & 9.
 Set 1" iron pipe with brass cap and is accepted as the best available evidence of the position of the original corner.
 6" H. Maple N 15° E 1.47'
 6" B. Ash S 61° E 17.31'
 4" H. Maple S 18° W 13.19'
 6" H. Maple N 80° W 25.03'

Signed by *John I. Haataja*
 Surveyor's Michigan License No. 19833

Date November 22, 1994