

JAN 05 2000

SECTION

LAND CORNER RECORDATION CERTIFICATE
Filing Requirement of Act 74, Mich. P.A. 1970

For corners in

Keweenaw

(County)

Located In:

Corner Code #

1. Public Land Survey

T 57 R 33

K-9

T 57 R 33

K-8

T R

T R

2. Property Controlling
In Section

S T R

S T R

3. Miscellaneous
Property in Sec.

S T R

S T R

REGISTER'S OFFICE

County of Keweenaw

SS

Received for Record, the

13th

day of December

A.D. 19 99

at 1:00 o'clock

P

M., and Recorded

in Liber 1

of

LCR

on page

213

Julie Larson, Deputy
Register of Deeds

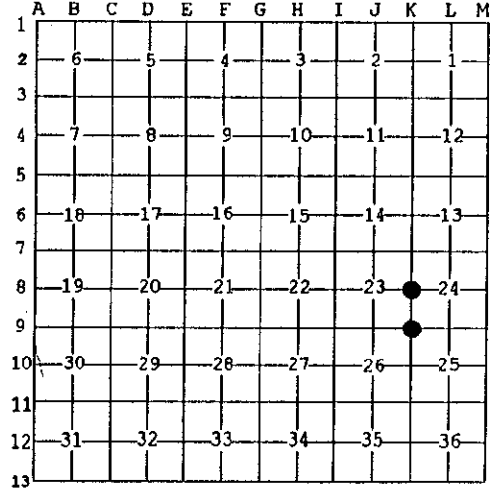
Register of Deeds Stamp & File Number

4. Lot No. _____, Recorded Plat _____

5. Private Claims _____

I, James M. Pardini, in a field survey on 5/5, 19 99 do hereby state that under requirements of P.A. 74, Michigan P.A. of 1970, the corner points mentioned in lines 1 and 2 above were in conformance with regulations and rules therefore as required in the current manual of survey instructions of the United States Department of the Interior, Bureau of Land Management or by a decree of a Court of Law and /or that the corner points mentioned in lines 3, 4 and 5 above were in conformance with the rules of the Michigan Board of Land Surveyors or by a Decree of a Court of Law; established, re-established, monumented, recovered, found as expressed below:

NOTE: Not more than 2 corners, all in the same town and range, may be recorded on this certificate.



A. Description of original monument and accessories and/or subsequent restoration:

(K-9) SW corner section 24 T57N-R33W
Samuel W. Hill marked section corner on 8"
Sugar in 1846. U.S. Bearing Trees:
18" Fir N40°E 6 lks
18" Yellow Birch S60°W 52 lks

(K-8) West 1/4 corner section 24 T57N-R33W
3" diameter Spruce post for quarter section corner set by Samuel W. Hill in 1846.
U.S. Bearing Trees: 12" Hemlock W 23 lks
8" Hemlock S40°E 10 lks

B. Description of corner evidence found and/or method applied in restoring or reestablishing corner:

(K-9) Re-established section corner by double proportionate measure. Between the NE corner 14-57-33 and SE corner 26-57-33 North and South and the NE corner 27-57-33 and SE corner 24-57-33 East and West.

(K-8) Re-established 1/4 corner by single proportionate measure between section corners North and South.

Ratified by Peer Group
In accordance with P.A. 345
Co. Rep. James M. Pardini
Date 12/7/99

C. Description of monument for corner and accessories established to perpetuate locating the position of the corner:

(K-9) Set 1"x36" iron pipe 24" in ground /w small rock mound /w 4" brass cap marked "Keweenaw Monumentation Point".

- 10" Spruce N86°E 11.72'
- 8" Sugar Maple S52°E 63.36'
- 8" Aspen S18°W 19.69'
- 8" White Pine N42°W 15.00'

(K-8) Set 1"x36" iron pipe 24" in ground /w 4" brass cap marked "Keweenaw Monumentation Point".
8" Yellow Birch N75°E 12.53'
7" Red Maple S50°E 17.80'
4" Red Maple S15°W 17.69'
6" Yellow Birch N55°W 24.04'

Signed by James M. Pardini
Surveyor's Michigan License No. 32340

Date 12/7/99

