

DEC 16 1998

LAND CORNER RECORDATION CERTIFICATE

Filing Requirement of Act 74, Mich. P.A. 1970

SECTION REGISTER'S OFFICE } SS  
County of Keweenaw }

For corners in Keweenaw  
(County)

Located In:

Corner Code #

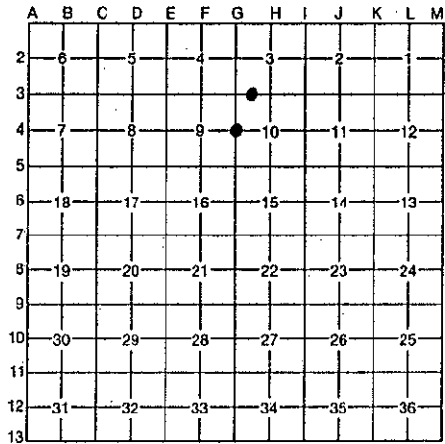
Received for Record, the 4<sup>th</sup>  
day of December A. D. 1998  
at 1:00 o'clock P. M., and Recorded  
in Liber 1 of LCR  
on page 183  
Marilyn Wergust  
Register of Deeds Stamp & File Number

- 1. Public Land Survey T 58N R 27W (G-4) ✓  
T 58N R 27W (G/H-3) MC-10
- 2. Property Controlling S \_\_\_\_\_ T \_\_\_\_\_ R \_\_\_\_\_  
in Section S \_\_\_\_\_ T \_\_\_\_\_ R \_\_\_\_\_
- 3. Miscellaneous S \_\_\_\_\_ T \_\_\_\_\_ R \_\_\_\_\_  
Property in Section S \_\_\_\_\_ T \_\_\_\_\_ R \_\_\_\_\_

- 4. Lot No. \_\_\_\_\_, Recorded Plat \_\_\_\_\_
- 5. Private Claims \_\_\_\_\_

Ronald S. Haataja in a field survey on September, 19 96  
do hereby certify that under requirements of P.A. 74, Michigan P.A. of 1970, the corner points mentioned in lines 1 and 2 above were in conformance with regulations and rules therefore as required in the current manual of survey instructions of the United States Department of the Interior, Bureau of Land Management or by a decree of a Court of Law and/or that the corner points mentioned in lines 3, 4 and 5 above were in conformance with the rules of the Michigan Board of Professional Surveyors or by a Decree of a Court of Law; established, re-established, monumented, re-monumented, recovered, found as expressed below:

NOTE: Not more than 4 corners, all in the same town and range, may be recorded on this certificate.



A. Description of original monument and accessories and/or subsequent restoration:

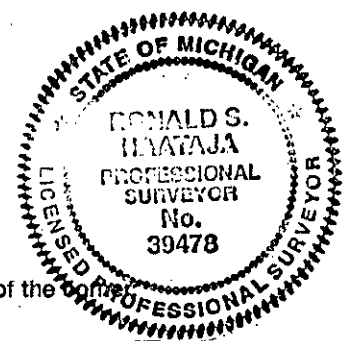
(G-4) W1/4 Corner Section 10, T58N-R27W  
40.00 Set Quarter Section Post  
References: W. Birch 5" S05°W 16 lks.  
Aspen 7" N23°E 16 lks.

Ratified by Peer Group  
In accordance with P.A. 345  
Co. Rep. James M. Hall  
Date 12/3/98

(G/H-3) Meander Corner between Sections 10 & 3, T58N-R27W  
13.50 Intersected Lake Superior. W. Birch 4" for Meander Corner on slope of conglomerate rock 4 feet high capped with about 6 feet of coarse gravel. Reference: W. Birch 5" N74°W 48 lks.  
Old Chips Larson map shows iron drill pin. (Nothing found. Apparently lost by erosion).

B. Description of corner evidence found and/or method applied in restoring or reestablishing corner:  
(G-4) W1/4 Corner Section 10, T58N-R27W  
Set 1-1/2" O.D. Pipe at found location of 4" wood post with C&H Tag.

(G/H-3) Meander Corner between Sections 10 & 3, T58N-R27W  
Set 1" Iron Pipe at margin of Lake Superior on bank on old blazed line from the NW Corner of Section 10.



C. Description of monument for corner and accessories established to perpetuate locating the position of the corner:  
(G-4) W1/4 Corner Section 10, T58N-R27W  
Witnesses: 12" Balsam S05°E 4.55', 15" Cedar N23°E 43.80',  
12" Balsam N65°W 10.00', 12" Balsam S62°E 26.80'.

(G/H-3) Meander Corner between Sections 10 & 3, T58N-R27W  
Witnesses: 10" W. Pine S63°E 20.24', 6" W. Pine S33°E 34.61',  
4" Spruce S80°W 32.96', 3" Poplar N28°W 24.20'.

Signed by Ronald S. Haataja Date October 28, 1998  
Surveyor's Michigan License No. 39478