

SURVEY & REMONUMENTATION

MAR 19 1997

COMMISSION

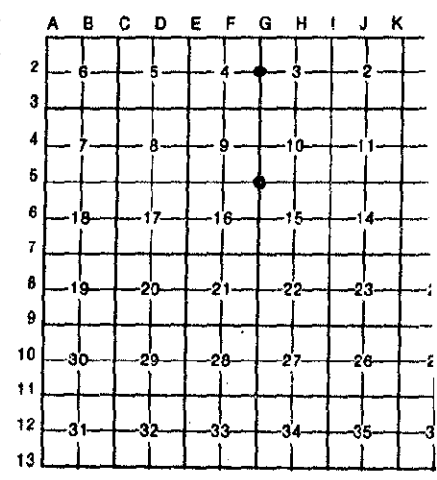
LAND CORNER RECORDATION CERTIFICATE Filing Requirement of Act 74, Mich. P.A. 1970

For corners in

<u>Keweenaw</u> <small>(County)</small>	Located In:	Corner Code #
1. Public Land Survey	T <u>58</u> R <u>29</u>	G-5
	T <u>58</u> R <u>29</u>	G-2 ✓
	T _____ R _____	
	T _____ R _____	
2. Property Controlling in Section	S _____ T _____ R _____	
	S _____ T _____ R _____	
3. Miscellaneous Property in Sec.	S _____ T _____ R _____	
	S _____ T _____ R _____	
4. Lot No. _____, Recorded Plat _____		
5. Private Claims _____		

REGISTER'S OFFICE
County of Keweenaw } SS
Received for Record, the 9th
day of December A.D. 1996
at 1:00 o'clock P.M., and Record
in Liber 1 of L.C.R.
on page 154
Roberta Rosenberger
Register of Deeds

Register of Deeds Stamp & File Number



I, John I. Haataja, in a field survey on November 7, 1996
do hereby certify that under requirements of P.A. 74, Michigan P.A. of 1970, the corner points mentioned
in lines 1 and 2 above were in conformance with regulations and rules therefore as required in the
current manual of survey instructions of the United States Department of the Interior, Bureau of Land
Management or by a decree of a Court of Law and/or that the corner points mentioned in lines 3, 4 and 5
above were in conformance with the rules of the Michigan Board of Land Surveyors or by a Decree of a
Court of Law; established, re-established, monumented, re-monumented, recovered, found as
expressed below:

NOTE: Not more than 4 corners, all in the same town and range, may be recorded on this certificate.

A. Description of original monument and accessories and/or subsequent restoration:

- | | |
|---|--|
| <p>G-5 S.E. corner Sec. 9
Wood Post
Cedar 10" S 41 W 34 lks.
Fir 14" N 38 E 29 lks.</p> | <p>G - 2 East 1/4 corner Sec. 4
Wood Post
Pine 8" S 20 E 16 lks.
Birch 6" N 28 W 10 lks.</p> |
|---|--|

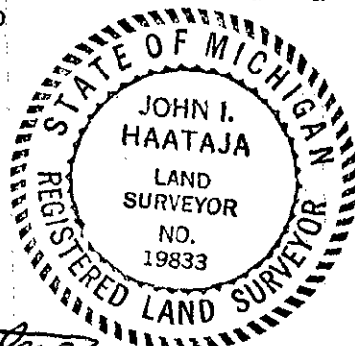
B. Description of corner evidence found and/or method applied in restoring or reestablishing corner:

- | | |
|--|---|
| <p>G-5 FND. 1-3/4" pipe for corner.
Accepted as previously recorded
in Liber 1 of L.C.R. on Page 48.</p> | <p>G - 2 FND. scribed Cedar B.T.
Cedar was scribed in 1904 by
Lewis & Nelson. It was re-
covered in 1954 by C&H
Surveyor Khine. Re-established
corner off of scribed Cedar B.T.
at base of sq. Cedar.</p> |
|--|---|

Ratified by Peer Group
In accordance with P.A. 345
Co. Rep. James M. Heald
Date 12/6/96

C. Description of monument for corner and accessories established to perpetuate locating the position of the corner:

- | | |
|---|---|
| <p>G - 5 S.E. corner Sec. 9
1-3/4" pipe with brass cap
12" Y. Birch S 8 W 4.8'
8" Y. Birch N 51 E 9.4'
8" Maple N 68 W 19.97'
12" Maple N 23 W 25.14'</p> | <p>G - 2 East 1/4 corner Sec. 4
Set 1" pipe with brass cap.
6" Cedar N 3 E 10.12'
14" Cedar N 61 E 7.59'
12" Spruce S 19 E 3.91'
10" Spruce S 73 W 13.46'</p> |
|---|---|



Signed by John I. Haataja Date 11/27/96
Surveyor's Michigan License No. 19833