

SURVEY & REMONUMENTATION

MAR 19 1997

COMMISSION

LAND CORNER RECORDATION CERTIFICATE
Filing Requirement of Act 74, Mich. P.A. 1970

For corners in

Keweenaw
(County)

Located In:

Corner Code #

- 1. Public Land Survey T 58 R 29
 T 58 R 29
 T R
 T R
2. Property Controlling S T R
 in Section S T R
3. Miscellaneous S T R
 Property in Sec. S T R

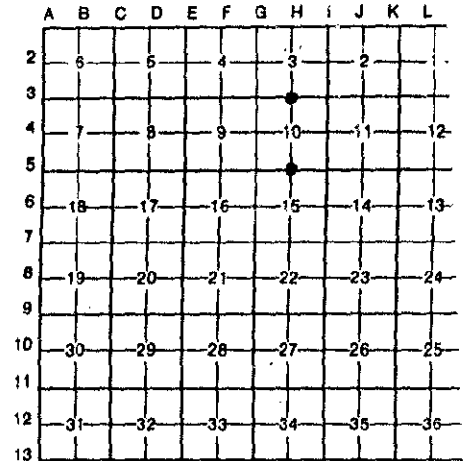
H-5 ✓
H-3

- 4. Lot No. _____, Recorded Plat _____
- 5. Private Claims _____

REGISTER'S OFFICE }
County of Keweenaw } SS
Received for Record, the 9th
day of December A.D. 1996
at 1:00 o'clock P.M., and Records
in Liber 1 of LCR
on page 155
Roberta Rosenberger, Deputy
Register of Deeds

Register of Deeds Stamp & File Number

I, John I. Haataja, in a field survey on September 17, 19 96
do hereby certify that under requirements of P.A. 74, Michigan P.A. of 1970, the corner points mentioned
in lines 1 and 2 above were in conformance with regulations and rules therefore as required in the
current manual of survey instructions of the United States Department of the Interior, Bureau of Land
Management or by a decree of a Court of Law and/or that the corner points mentioned in lines 3, 4 and 5
above were in conformance with the rules of the Michigan Board of Land Surveyors or by a Decree of a
Court of Law; established, re-established, monumented, re-monumented, recovered, found as
expressed below:



NOTE: Not more than 4 corners, all in the same town and range, may be recorded on this certificate.

A. Description of original monument and accessories and/or subsequent restoration:

H-5 South 1/4 corner Sec. 10
Wood Post
Sugar 12" S 18 E 15 lks.
Sugar 14" N 33 W 27 lks.

H-3 South 1/4 corner Sec. 3
Wood Post
W. Pine 18" S 10 E 21 lks.
Fir 10" N 17 W 28 lks.

B. Description of corner evidence found and/or method applied in restoring or reestablishing corner:

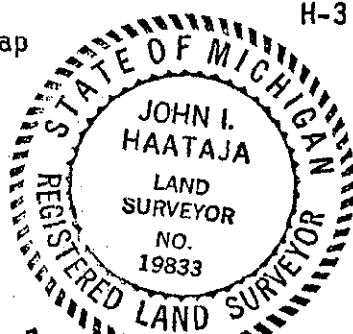
H-5 No evidence of any corner FND.
Re-established by single proportionate
measurement between S.E. & S.W.

H-3 No evidence original cor. FND.
Re-established corner by propor-
tional measurement from measure-
ment from known corners.

Ratified by Peer Group
In accordance with P.A. 345
Co. Rep. James M. Stahl
Date 12/6/96

C. Description of monument for corner and accessories established to perpetuate locating the position of the corner:

H-5 South 1/4 corner Sec. 10
Set 1 1/2" pipe with brass cap
16" Oak S 22 E 3.89'
16" Cedar N 65 E 35.89'
12" Maple N 65 W 18.00'
4" Maple N 23 E 18.05'



H-3 South 1/4 corner Sec. 3
Set 1" pipe with brass cap
12" Maple N 29 E 13.04'
8" Maple S 80 E 7.94'
12" Maple S 23 W 21.76'
8" Cedar S 77 W 25.79'

Surveyed by John I. Haataja
Surveyor's Michigan License No. 19833

Date 11/27/96