

**SURVEY & REMONUMENTATION**

MAR 19 1997

**COMMISSION**

**LAND CORNER RECORDATION CERTIFICATE**

Filing Requirement of Act 74, Mich. P.A. 1970

For corners in

Keweenaw

(County)

Located In:

Corner Code #

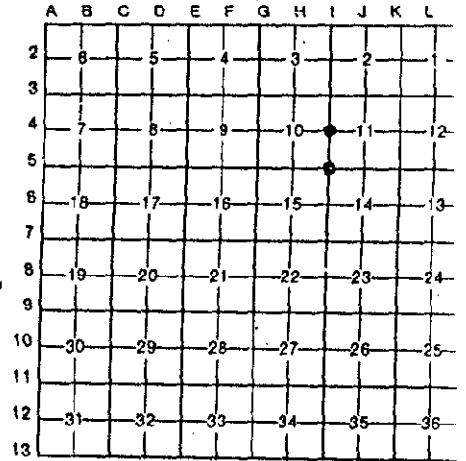
- 1. Public Land Survey      T 58 R 29  
    T 58 R 29  
    T \_\_\_\_\_ R \_\_\_\_\_  
    T \_\_\_\_\_ R \_\_\_\_\_
- 2. Property Controlling      S \_\_\_\_\_ T \_\_\_\_\_ R \_\_\_\_\_  
    in Section                    S \_\_\_\_\_ T \_\_\_\_\_ R \_\_\_\_\_
- 3. Miscellaneous            S \_\_\_\_\_ T \_\_\_\_\_ R \_\_\_\_\_  
    Property in Sec.            S \_\_\_\_\_ T \_\_\_\_\_ R \_\_\_\_\_

I-4  
I-5 ✓  
 \_\_\_\_\_  
 \_\_\_\_\_  
 \_\_\_\_\_  
 \_\_\_\_\_

- 4. Lot No. \_\_\_\_\_, Recorded Plat \_\_\_\_\_
- 5. Private Claims \_\_\_\_\_

REGISTER'S OFFICE }  
 County of Keweenaw } SS  
 Received for Record, the 9th  
 day of December A.D. 1996  
 at 1:00 o'clock P.M., and Recorded  
 in Liber 1 of L.C.R.  
 on page 156  
Roberta Rosenberger Dean  
 Register of Deed.

Register of Deeds Stamp & File Number



I, John I. Haataja, in a field survey on September 5, 19 96  
 do hereby certify that under requirements of P.A. 74, Michigan P.A. of 1970, the corner points mentioned  
 in lines 1 and 2 above were in conformance with regulations and rules therefore as required in the  
 current manual of survey instructions of the United States Department of the Interior, Bureau of Land  
 Management or by a decree of a Court of Law and/or that the corner points mentioned in lines 3, 4 and 5  
 above were in conformance with the rules of the Michigan Board of Land Surveyors or by a Decree of a  
 Court of Law; established, re-established, monumented, re-monumented, recovered, found as  
 expressed below:

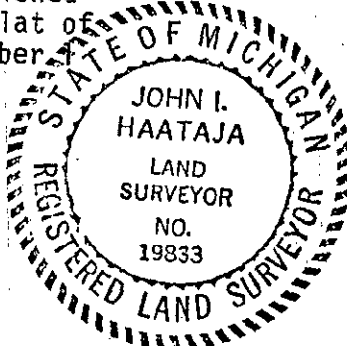
**NOTE: Not more than 4 corners, all in the same town and range, may be recorded on this certificate.**

A. Description of original monument and accessories and/or subsequent restoration:

- I-4 East 1/4 corner Section 10  
 Wood Post  
 Corner set 20 lks. North of Bay of Lake  
 Cedar 14" N 20 E 14 lks.  
 Cedar 6" N 10 lks.
- I-5 S.E. corner Sec. 10  
 Wood Post  
 Ironwood 8" S 40 E 64 lks.  
 Sugar 16" S 80 W 41 lks.

B. Description of corner evidence found and/or method applied in restoring or reestablishing corner:

- I-4 Orig. corner not found.  
 Corner location was re-established  
 during survey of Assessor's Plat of  
 Lake Medora as recorded in Liber  
 of L.C.R. Page 48.
- I-5 Found 1-3/4" pipe in place.  
 As recorded in Liber 1 of L.C.R.  
 Page 46.



Ratified by Peer Group  
 In accordance with P.A. 345  
 Co. Rep. James M. Lehtinen  
 Date 12/6/96

Description of monument for corner and accessories established to perpetuate locating the position of the corner:

- I-4 East 1/4 corner Sec. 10  
 Because 1/4 corner would be 2'± into  
 Bay, a Wit. corner was set on meander  
 line of plat and 27.47' N. of 1/4 cor.  
 location W.C. 1" pipe with brass cap  
 flush.  
 Ref. for W.C. Conc. Mon. N 42 W 104.75'  
    Conc. Mon. S 42 E 14.70'  
    S.E. cor. cabin N 24 E 17.33'  
    10" Maple N 84 W 33.79'
- I-5 S.E. corner Sec. 10  
 1-3/4" pipe with brass cap  
 14" Maple N 40 W 20.48'  
 12" Maple S 53 W 26.51'  
 14" Maple S 11 E 14.09'  
 10" Oak N 73 E 22.26'

Surveyed by John I. Haataja Date 11/27/96  
 Surveyor's Michigan License No. 19833