

REMONUMENTATION

JAN 21 1998

SECTION

LAND CORNER RECORDATION CERTIFICATE
Filing Requirement of Act 74, Mich. P.A. 1970

For corners in

Keweenaw
(County)

Located In:

Corner Code #

- 1. Public Land Survey T 58N R 29W I-11 MC 14
2. Property Controlling in Section S T R
3. Miscellaneous Property in Sec. S T R

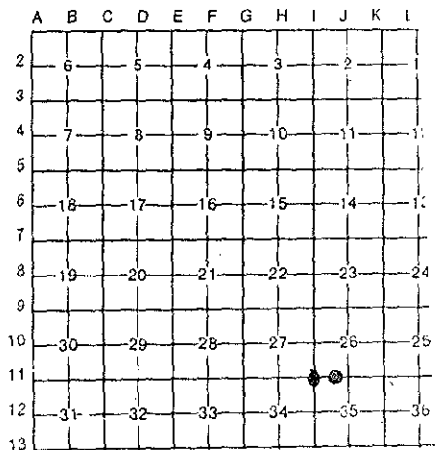
REGISTER'S OFFICE
County of Keweenaw } SS
Received for Record, the 30th
day of December A.D. 19 97
at 10:00 o'clock A.M. and Recorded
in Liber 1 of LCR
on page 175
Julie Carlson, Deputy
Register of Deeds

Register of Deeds Stamp & File Number

- 4. Lot No. , Recorded Plat
5. Private Claims

I, John Haataja, in a field survey on 11/13, 19 97, do hereby certify that under requirements of P.A. 74, Michigan P.A. of 1970, the corner points mentioned in lines 1 and 2 above were in conformance with regulations and rules therefore as required in the current manual of survey instructions of the United States Department of the Interior, Bureau of Land Management or by a decree of a Court of Law and/or that the corner points mentioned in lines 3, 4 and 5 above were in conformance with the rules of the Michigan Board of Land Surveyors, or by a Decree of a Court of Law; established, re-established, monumented, re-monumented, recovered, found as expressed below:

NOTE: Not more than 4 corners, all in the same town and range, may be recorded on this certificate.



- A. Description of original monument and accessories and/or subsequent restoration:
I-11 Wood post set in 1847
Cedar 10" S70°E 16LKS
Cedar 12' N55°W 23 LKS
C&H surveyor W. Kline placed an iron pin at this corner on October 6, 1952.
MC 14 Wood post set at 6' above watermark in 1847.
Y. Pine 12" S70°W 70LKS
Fir 6" North 21 LKS

- B. Description of corner evidence found and/or method applied in restoring or reestablishing corner:
I-11 Found iron pin knocked over. Reestablished corner at record distance from pin at 1/16 corner to the East.
MC 14 No evidence of corner found. Set MC on Section line between Section 26 & 35 at high watermark.

Ratified by Peer Group
In accordance with P.A. 345
Co. Rep. [Signature]
Date 12/15/97

- C. Description of monument for corner and accessories established to perpetuate locating the position of the corner:
I-11 Set 1" pin with brass cap
4" Balsam N19°W 21.10'
6" W. Birch N85°E 18.31'
5" Balsam S47°E 10.48'
14" Cedar S19°W 48.62'
MC 14 Set 1" pipe with brass cap
12" Spruce S75°W 44.90'
15" Spruce N76°W 9.23'
10" Balsam N42°E 17.80'
12" Spruce N84°E 45.84'



Signed by [Signature]
Surveyor's Michigan License No. 19833

Date 12/30/1997