

CURRENT REF

JAN 05 2000

SECTION

LAND CORNER RECORDATION CERTIFICATE
Filing Requirement of Act 74, Mich. P.A. 1970

For corners in
Keweenaw
(County)

Located In: Corner Code #

1. Public Land Survey T59 R 28 B-11
T59 R 28 C-11 ✓
T R
T R
T R

2. Property Controlling in Section S T R
S T R
S T R
S T R

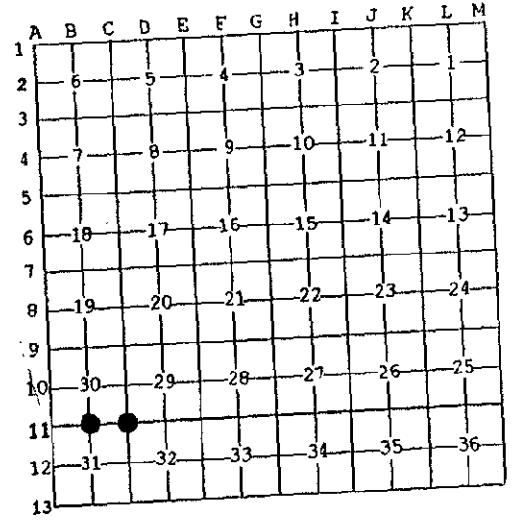
3. Miscellaneous Property in Sec. S T R
S T R

4. Lot No. _____, Recorded Plat _____
5. Private Claims _____

REGISTER'S OFFICE }
County of Keweenaw } SS
Received for Record, the 13th
day of December A.D. 19 99
at 1:00 o'clock P.M., and Recorded
in Liber 1 of LCR
on page 208
James Carlson, Deputy
Register of Deeds

Register of Deeds Stamp & File Number

I, James M. Pardini, in a field survey on 9/21, 19 99 do hereby state that under requirements of P.A. 74, Michigan P.A. of 1970, the corner points mentioned in lines 1 and 2 above were in conformance with regulations and rules therefore as required in the current manual of survey instructions of the United States Department of the Interior, Bureau of Land Management or by a decree of a Court of Law and/or that the corner points mentioned in lines 3, 4 and 5 above were in conformance with the rules of the Michigan Board of Land Surveyors or by a Decree of a Court of Law; established, re-established, monumented, recovered, found as expressed below:



NOTE: Not more than 2 corners, all in the same town and range, may be recorded on this certificate.

A. Description of original monument and accessories and/or subsequent restoration:
(B-11) N 1/4 corner section 31 T59N-R28W. Quarter section post set by William Ives DS, in 1845. U.S. Bearing Trees:
6" Fir S18°E 14 lks
3" Aspen N55°W 23 lks

(C-11) NE corner section 31 T59N-R28W. Section corner post set by William Ives DS in 1845. U.S. Bearing Trees:
13" Yellow Birch N50°W 44 lks
10" White Pine S45°W 36 lks

B. Description of corner evidence found and/or method applied in restoring or reestablishing corner:
(B-11) Found and accepted 3/4" iron pipe set by proportionate measure by Robert W. Crampton and witnessed by same in 1999.
(C-11) Calumet and Hecla Mining Co. records indicate pole found for section corner /w "old Yellow Pine stump N50°W 28', stump rotted away and White Pine stump S45°W 23.7' /w blazes and part of "B" of old BT mark. Kline and Gillies set iron pipe for section corner in 1949. Found and accepted iron pipe no evidence of U.S. BTs.

Ratified by Peer Group
In accordance with P.A. 345
Co. Rep. James M. Pardini
Date 12/7/99

C. Description of monument for corner and accessories established to perpetuate locating the position of the corner:
(B-11) Replaced 3/4" iron pipe /w 1"x30" iron pipe set in concrete /w 18" projecting above ground /w 1'x3' mound of stone and 4" brass cap marked Keweenaw Co. Remonumentation Point.
4" Balsam N20°E 17.02'
7" Maple N75°E 2.75'
20" Spruce S35°E 8.88'
5" Spruce N80°W 14.70'

(C-11) Replaced 1 1/2" iron pipe /w 1"x30" iron pipe 16" in ground /w small brass cap marked Keweenaw Co. Remonumentation Point.
10" Twin Red Pine S16°E 6.76'
11" White Pine N68°E 40.81'
18" White Pine N24°E 41.95'

Signed by James M. Pardini
Surveyor's Michigan License No. 32340

