

**SURVEY &
REMONUMENTATION**

JUL 28 1997

COMMISSION

LIBER 2 PAGE 126

LAND CORNER RECORDATION CERTIFICATE
Filing Requirement of Act 74, Mich. P.A. 1970

For corners in Ross Twp.

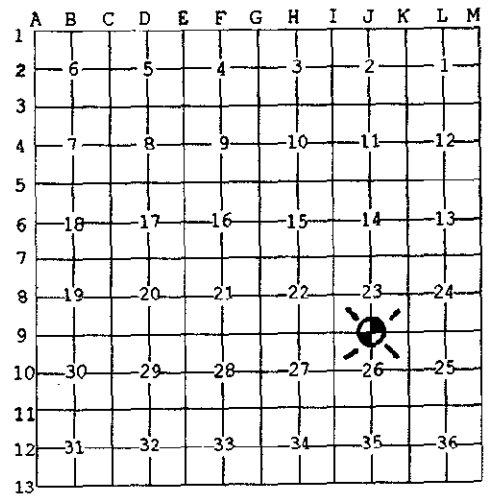
<u>Kalamazoo</u> (County)	Located In:	Corner Code #
1. Public Land Survey	T1S R9W	J-09
	T___ R___	_____
	T___ R___	_____
	T___ R___	_____
2. Property Controlling in Section	S___ T___ R___	_____
	S___ T___ R___	_____
3. Miscellaneous Property in Sec.	S___ T___ R___	_____
	S___ T___ R___	_____

STATE OF MICHIGAN
COUNTY OF KALAMAZOO
RECEIVED FOR RECORD
'97 APR 7 AM 9 21
Clerk - Register
Register of Deeds Stamp & File Number

4. Lot No. _____, Recorded Plat _____
5. Private Claims _____

I, Robert E. Snell, in a field survey on July 9, 1996 do hereby state that under requirements of P.A. 74, Michigan P.A. of 1970, the corner points mentioned in lines 1 and 2 above were in conformance with regulations and rules therefore as required in the current manual of survey instructions of the United States Department of the Interior, Bureau of Land Management or by a decree of a Court of Law and /or that the corner points mentioned in lines 3, 4 and 5 above were in conformance with the rules of the Michigan Board of Land Surveyors or by a Decree of a Court of Law; established, re-established, monumented, recovered, found as expressed below.

NOTE: Not more than 2 corners, all in the same town and range, may be recorded on this certificate.



- A. Description of original monument and accessories and/or subsequent restoration:
- 1826: United States Government Surveyors; set 1/4 Section post.
Aspen 8" N. 10° E. 333 lks.
 - 1883: F. Hodgman, County Surveyor; (7) "Found old stake at intersection of fences. No bearing trees. Bored 3 ft., put stone and brick in the bottom and 1 ft. earthen post over".
Wh. Oak 4" N. 06° E. 43 lks.
Hickory 4" N. 86½° W. 80 lks.

- B. Description of corner evidence found and/or method applied in restoring or reestablishing corner:
- 1975: Wilkins & Wheaton Engr. Co., Robert E. Snell, RLS #9734; L.C.R.C. L-1, P-567, found tile.
3" Pear N. 40° W. 22.9'
4" Pear S. 40° W. 22.6'
5" Pear S. 87° W. 10.7'
4" Pear S. 20° W. 41.75'
 - 1996: Found tile from traverse points of 1975 survey.

RATIFIED
BY KALAMAZOO COUNTY
REMONUMENTATION
PEER GROUP
2-27-1997

- C. Description of monument for corner and accessories established to perpetuate locating the position of the corner:
- J-09: South 1/4 post, Section 23, T. 1 S., R. 9 W., ratified by the Kalamazoo County Remonumentation Program Peer Group on February 27, 1997 and is accepted as a careful and faithful perpetuation of the position of the original corner. Found a 3" round tile with "x" on top as set in a remonumentation survey in 1883 by F. Hodgman, County Surveyor. Placed remonumentation sleeve over tile.
Top of Irrigation Well N. 40° E. 88.10'
PK Nail in 6" Apple S. 80° E. 16.89'
PK Nail in 10" Apple S. 80° W. 7.40'
Center line Two track drive North 16.05'

Signed by Robert E. Snell Date 3-14-97
Surveyor's Michigan License No. 9734