

SURVEY &
REMONUMENTATION

MAY 28 1997

OTIS PARSONS

LAND CORNER RECORDATION CERTIFICATE
Filing Requirement of Act 74, Mich. P.A. 1970

For corners in Alamo Twp.

Kalamazoo (County)	Located In:	Corner Code #
1. Public Land Survey	T1S R 12W	K-07
	T R	
	T R	
	T R	
	T R	
2. Property Controlling in Section	S T R	
	S T R	
3. Miscellaneous Property in Sec.	S T R	
	S T R	

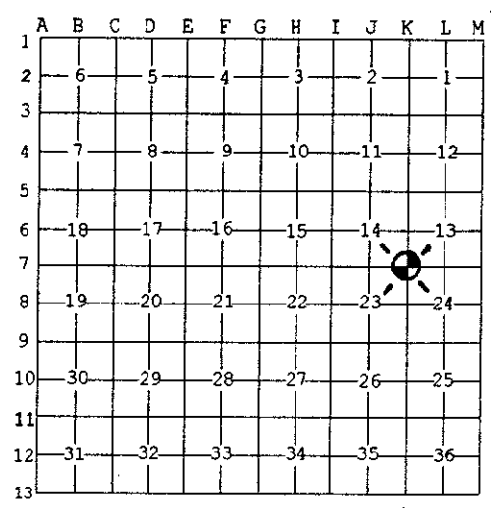
STATE OF MICHIGAN
COUNTY OF KALAMAZOO
RECEIVED FOR RECORD
96 NOV 15 PM 1 59
CLERK-REGISTER
James G. ...

LIDER 2PAGE 084

Register of Deeds Stamp & File Number

4. Lot No. _____, Recorded Plat _____
5. Private Claims _____

I, Robert E. Snell, in a field survey on Sept. 23, 1996 do hereby state that under requirements of P.A. 74, Michigan P.A. of 1970, the corner points mentioned in lines 1 and 2 above were in conformance with regulations and rules therefore as required in the current manual of survey instructions of the United States Department of the Interior, Bureau of Land Management or by a decree of a Court of Law and /or that the corner points mentioned in lines 3, 4 and 5 above were in conformance with the rules of the Michigan Board of Land Surveyors or by a Decree of a Court of Law; established, re-established, monumented, recovered, found as expressed below:



NOTE: Not more than 2 corners, all in the same town and range, may be recorded on this certificate.

** rotted wood (same mea.) below wood (3 1/2' below surface) found a 8"x8"x12" stone with brick on 2 sides (mea. 3.21' N. & 5.46' E.)

A. Description of original monument and accessories and/or subsequent restoration:

1829: United States Government Surveyors; set post, corner to Sections 13, 14, 23 & 24.
W. Oak 15" S. 79 1/2° W. 72 lks.
W. Oak 14" S. 71° E. 75 lks.

1904: E. Strong, County Surveyor; in a survey that he established the 1/8 corner between the Southeast corner and East 1/4 post of Section 13, he notes "found stone by stone 2' below surface, set I think by Otis Parsons, (Mr. P. lived near here and he did careful and accurate work but buried his unmarked stones to low.) This is a warning to us!"

B. Description of corner evidence found and/or method applied in restoring or reestablishing corner:

- 1960: D. Hooth, M.S.H.D. Surveyor; found 1/2" steel rod.
42" Oak N. 65° W. 69.65', T.P. N. 05° W. 56.51', 11" Box Elder S. 45° E. 47.0'
- 1978: Wilkins & Wheaton Engr. Co.; used same witnesses as above.
- 1992: John Hunt, R.L.S. #23513; L.C.R.C. L-1, P-970, 3/8" iron, 2.5' South of center line of road and in line with brush row to North, 33' Southerly and 36' Easterly found iron rod #28413.
S. 80° W. 38.90' PK East Face 14" Dia. Tree, N. 54.27' PK West Face 11" Dia. Tree
N. 70° E. 61.32' PK South Face 11" Dia. Tree
- 1996: Found 3/8" iron at surface, offset iron 3' to North & 5' to East. Below 3/8" iron found 1/2" x 18" iron (mea. 3.19' N. & 5.42' E.) below 1/2" iron found a piece of **

C. Description of monument for corner and accessories established to perpetuate locating the position of the corner:

K-07: Southwest corner Section 13, T. 1 S., R. 12 W., ratified by the Kalamazoo County Remonumentation Program Peer Group on October 17, 1996 and is accepted as a careful and faithful perpetuation of the position of the original corner. Found stone (8"x8"x12") with brick on 2 sides believed to have been set by Otis Parsons previous to 1904. Placed 20" Harrison Monument in monument box.

Exist. Nail/Flag in East Side	16" Elm	S. 62° W.	38.85'
Exist. Nail/Flag in West Side	14" Sassafras	N. 08° E.	35.64'
Exist. Nail/Flag in West Side	13" Oak	N. 50° E.	62.28'
Exist. Nail/Flag in West Side	6" Clump of Box Elder	S. 34° E.	33.47'

Signed by Robert E. Snell
Surveyor's Michigan License No. 9734

Date 11-14-96

RATIFIED
BY KALAMAZOO COUNTY
REMONUMENTATION
PEER GROUP