

LAND CORNER RECORDATION CERTIFICATE
Filing Requirement of Act 74, Mich. P.A. 1970

For corners in

Kalamazoo
(County)

Located In:

Corner Code #

Charleston Section 17

- | | | |
|------------------------------------|---------------------------|------------|
| 1. Public Land Survey | T <u>2</u> S R <u>9</u> W | <u>E-5</u> |
| | T _____ R _____ | _____ |
| | T _____ R _____ | _____ |
| | T _____ R _____ | _____ |
| 2. Property Controlling in Section | S _____ T _____ R _____ | _____ |
| | S _____ T _____ R _____ | _____ |
| 3. Miscellaneous Property in Sec. | S _____ T _____ R _____ | _____ |
| | S _____ T _____ R _____ | _____ |

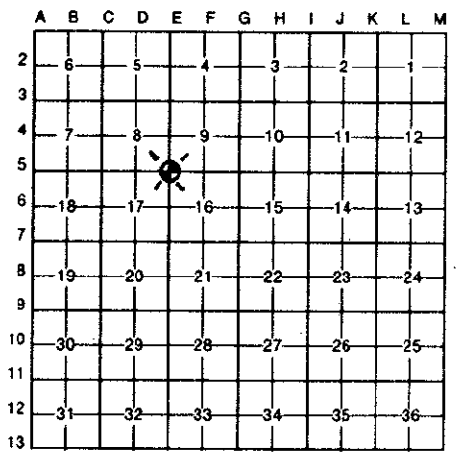
STATE OF MICHIGAN
 COUNTY OF KALAMAZOO
 RECEIVED FOR RECORD
 1994 MAR 15 PM 1 37
 CLERK - REGISTER

LIBER 1 PG 1114
 Register of Deeds Stamp & File Number

4. Lot No. _____, Recorded Plat _____
 5. Private Claims _____

I, Robert E. Snell, in a field survey on January 10, 19 94, do hereby certify that under requirements of P.A. 74, Michigan P.A. of 1970, the corner points mentioned in lines 1 and 2 above were in conformance with regulations and rules therefore as required in the current manual of survey instructions of the United States Department of the Interior, Bureau of Land Management or by a decree of a Court of Law and/or that the corner points mentioned in lines 3, 4 and 5 above were in conformance with the rules of the Michigan Board of Land Surveyors or by a Decree of a Court of Law; established, re-established, monumented, re-monumented, recovered, found as expressed below:

NOTE: Not more than 4 corners, all in the same town and range, may be recorded on this certificate.



- A. Description of original monument and accessories and/or subsequent restoration:
 Original corner established by U.S. Government Survey of 1826. Set Post.
 Aspen 14" North 43°-E 6.8 Lks (4.49')
 Elm 15" South 74½°-E 134 Lks (88.44')
 1883-F. Hodgeman County Surveyor-found stump of U.S. bearing tree standing.
 Ran North 74½°-W, 134 Lks (88.44') from it and set three-foot earthen post.
 Burr Oak 20" South 77°-E 87 Lks (57.42')
 Burr Oak 8" South 20°+E 7½ Lks (4.79')

- B. Description of corner evidence found and/or method applied in restoring or reestablishing corner:
 Found solid clay tile with "Mushroom" head 6" below surface.
 27" Burr Oak South 55°-E 54.7'± is laying down
 28" Burr Oak South 50°-E 5.4' is still standing

R.E.S.
RATIFIED
BY KALAMAZOO COUNTY
REMONUMENTATION
PEER GROUP
 1-20-94

- C. Description of monument for corner and accessories established to perpetuate locating the position of the corner:
 E-5 Northeast corner Section 17, T. 2 S., R. 9 W., ratified by Kalamazoo Remonumentation Program Peer Group on January 20, 1994. Found solid clay tile with "Mushroom" head as called for in 1883 remonumentation survey by F. Hodgeman and is accepted as a careful and faithful perpetuation of the original corners position. Placed remonumentaiton sleeve on top of "Mushroom" head of tile.
 PK Nail in NE side 18" Wh. Ash N 25°-W 39.12'
 PK Nail in SW side 8" Wh. Ash S 50°-W 29.88'
 PK Nail in W side 20" Oak N 35°-E 87.17'
 PK Nail in S side 24" Wh. Ash East 37.43'

Signed by Robert E. Snell Date 3-15-94
 Surveyor's Michigan License No. 9734