

MAY 28 1997

COMMISSION

LAND CORNER RECORDATION CERTIFICATE  
Filing Requirement of Act 74, Mich. P.A. 1970

CLERK - REGISTER  
*Jessie Thompson*

STATE OF MICHIGAN  
COUNTY OF KALAMAZOO  
RECEIVED FOR RECORD  
96 AUG 26 PM 4 00

LIBER 2 PAGE 048

Register of Deeds Stamp & File Number

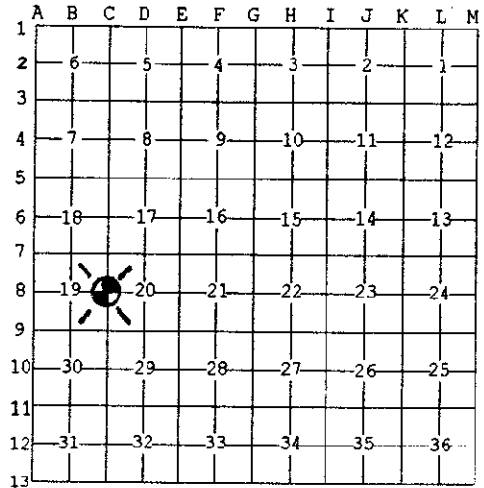
For corners in

Kalamazoo	Located In:	Corner Code #
(County)		
Kalamazoo		
1. Public Land Survey	T 2S R 11W	C-08
	T R	
	T R	
	T R	
2. Property Controlling in Section	S T R	
	S T R	
3. Miscellaneous Property in Sec.	S T R	
	S T R	

4. Lot No. \_\_\_\_\_, Recorded Plat \_\_\_\_\_  
5. Private Claims \_\_\_\_\_

I, Robert E. Snell, in a field survey on Feb 19, 1996 do hereby state that under requirements of P.A. 74, Michigan P.A. of 1970, the corner points mentioned in lines 1 and 2 above were in conformance with regulations and rules therefore as required in the current manual of survey instructions of the United States Department of the Interior, Bureau of Land Management or by a decree of a Court of Law and /or that the corner points mentioned in lines 3, 4 and 5 above were in conformance with the rules of the Michigan Board of Land Surveyors or by a Decree of a Court of Law; established, re-established, monumented, recovered, found as expressed below:

NOTE: Not more than 2 corners, all in the same town and range, may be recorded on this certificate.



A. Description of original monument and accessories and/or subsequent restoration:

1827: United States Government surveyors; set 1/4 section post  
Wh. Oak 20" N 14° E 13 lks.  
Hickory 6" West 18 lks.

1885: F. Hodgman, County Surveyor; found stake hole on East side of fence post at intersection of fences North, South and West. Set post.  
Hickory 6" S 45° W 5 1/2 lks.

B. Description of corner evidence found and/or method applied in restoring or reestablishing corner:

1949: Wilkins and Wheaton Engr. Co.; found brass cap 9.65 South of NW corner of lot 209 in West Morland Park.

1995: A. McMachen RLS #16935; LCRC L-1, P-1299. Found state brass cap.

1996: Found 4" brass cap (MSHD) 1.5' East of North and South fence.

RATIFIED  
BY KALAMAZOO COUNTY  
REMONUMENTATION  
PEER GROUP

C. Description of monument for corner and accessories established to perpetuate locating the position of the corner: 5-2-1996

C-08: East 1/4 post Section: 19, T 2 S, R. 11 W; ratified by the Kalamazoo County Remonumentation Program Peer Group on May 2, 1996 and is accepted as a careful and faithful perpetuation of the position of the original corner. Found 4" brass cap (MSHD) 1.5' East of North and South fence.

PK nail in West side 14" Maple	N 5° W	14.91'
PK nail in West side 24" Maple	S 10° W	23.76'
Northeast corner house #1003 Dobbin Dr.	N 75° W	71.13'
Southeast corner house #1003 Dobbin Dr.	S 55° W	79.40'

Signed by *Robert E. Snell*  
Surveyor's Michigan License No. 9734

Date 8-22-1996