

NOV 25 1998

SECTION

LAND CORNER RECORDATION CERTIFICATE
 Filing Requirement of Act 74, Mich. P.A. 1970

For corners in Kalamazoo Twp.

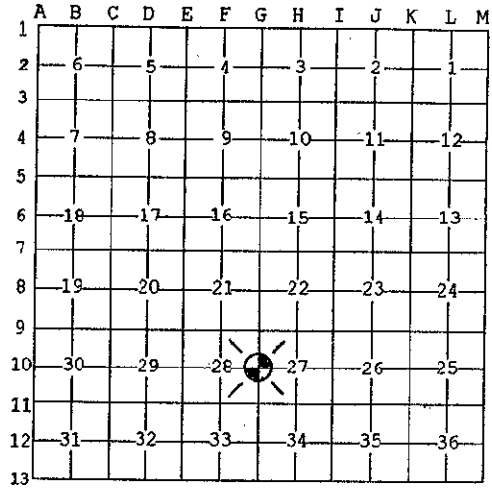
<u>Kalamazoo</u> <small>(County)</small>	Located In:	Corner Code #
1. Public Land Survey	T2S R11W	G-10
	T___ R___	_____
	T___ R___	_____
	T___ R___	_____
2. Property Controlling in Section	S___ T___ R___	_____
	S___ T___ R___	_____
3. Miscellaneous Property in Sec.	S___ T___ R___	_____
	S___ T___ R___	_____

STATE OF MICHIGAN
 COUNTY OF KALAMAZOO
 RECEIVED FOR RECORD
 '98 OCT 22 AM 11 37
 CLERK - REGISTER
 LIBER PAGE 348
 Register of Deeds Stamp & File Number

4. Lot No. _____, Recorded Plat _____
 5. Private Claims _____

I, Robert E. Snell, in a field survey on Aug. 6, 1998 do hereby state that under requirements of P.A. 74, Michigan P.A. of 1970, the corner points mentioned in lines 1 and 2 above were in conformance with regulations and rules therefore as required in the current manual of survey instructions of the United States Department of the Interior, Bureau of Land Management or by a decree of a Court of Law and /or that the corner points mentioned in lines 3, 4 and 5 above were in conformance with the rules of the Michigan Board of Land Surveyors or by a Decree of a Court of Law; established, re-established, monumented, recovered, found as expressed below:

NOTE: Not more than 2 corners, all in the same town and range, may be recorded on this certificate.



- A. Description of original monument and accessories and/or subsequent restoration:
- 1829: United States Government Surveyors; set 1/4 Section post.
 - Bl. Oak 18" S. 36° W. 23 lks.
 - W. Oak 18" N. 85° E. 31 lks.
 - 1880: F. Hodgman, County Surveyor; "Found cobble stone and brick and stump of one witness tree. Set post. 24"x6"x6", six inches below surface."
 - Red Oak 8" S. 37 3/4° W. 47 lks.

- B. Description of corner evidence found and/or method applied in restoring or reestablishing corner:
- 1972: A. McMachen, RLS #16935; found tile in monument box.
 - 14" Maple N. 45° W. 44.00'
 - 14" Maple N. 45° E. 55.60'
 - 14" Maple S. 45° E. 49.9'
 - 1998: Found 6"x6" marble monument, 2' below surface of road in monument box.

RATIFIED
 BY KALAMAZOO COUNTY
 REMONUMENTATION
 PEER GROUP

- C. Description of monument for corner and accessories established to perpetuate locating the position of the corner:
- G-10: West 1/4 post, Section 27, T. 2 S., R. 11 W., ratified by the Kalamazoo County Remonumentation Program Peer Group on August 20, 1998 and is accepted as a careful and faithful perpetuation of the original corner. Found 6"x6" marble monument with hole in center as placed by F. Hodgman in 1880 Remonumentation survey. Placed 20" Harrison monument in monument box prior to final coat of bituminous pavement on S. Westnedge Avenue reconstruction.
 - PK Nail in South Side Power Pole S. 60° W. 42.35'
 - PK Nail in South Side Power Pole N. 28° W. 43.13'
 - PK Nail in North Side Power Pole S. 44° E. 42.39'
 - PK Nail in North Side Power Pole N. 50° E. 36.34'

Signed by Robert E. Snell
 Surveyor's Michigan License No. 9734

Date 10-22-98