

SURVEY & REMONUMENTATION

1
2
SEP 14 1998

SECTION
Oshtemo Twp.

LAND CORNER RECORDATION CERTIFICATE
Filing Requirement of Act 74, Mich. P.A. 1970

For corners in Kalamazoo
(County)

Located In:

Corner Code #

1. Public Land Survey	T	2S	R	12W.	E-4
	T		R		
	T		R		
	T		R		
2. Property Controlling in Section	S		T	R	
	S		T	R	
3. Miscellaneous Property in Section	S		T	R	
	S		T	R	

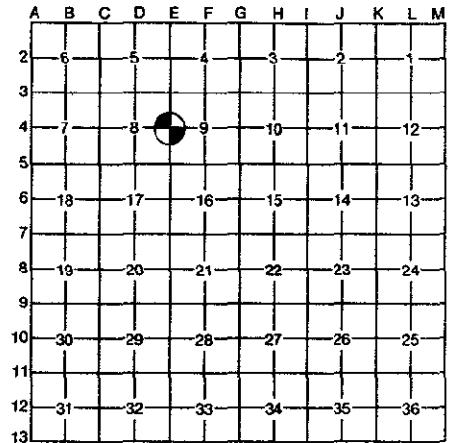
LIBER
CLERK - REGISTER

2 PAGE 292
98 MAR 26 PM 3 27
STATE OF MICHIGAN
COUNTY OF KALAMAZOO
RECEIVED FOR RECORD

Register of Deeds Stamp & File Number

4. Lot No. _____, Recorded Plat _____
5. Private Claims _____

I, Allen H. McMachen, in a field survey on January 22, 1998, do hereby certify that under requirements of P.A. 74, Michigan P.A. of 1970, the corner points mentioned in lines 1 and 2 above were in conformance with regulations and rules therefore as required in the current manual of survey instructions of the United States Department of the Interior, Bureau of Land Management or by a decree of a Court of Law and/or that the corner points mentioned in lines 3, 4 and 5 above were in conformance with the rules of the Michigan Board of Professional Surveyors or by a Decree of a Court of Law; established, re-established, monumented, re-monumented, recovered, found as expressed below:



NOTE: Not more than 4 corners, all in the same town and range, may be recorded on this certificate.

A. Description of original monument and accessories and/or subsequent restoration:

- 1830 - George W. Harrison, D.S., Set 1/4 Section post, Wh. Oak 7" S. 8 1/2° W. 53 lks., B. Oak 8" N. 27 1/2° E. 64 lks..
- 1873 - Ed Strong, C.S., "Found B. Oak (U.S.) N.E. and ring of 4 stones."

B. Description of corner evidence found and/or method applied in restoring or reestablishing corner:

Found 1" diameter pipe angled along side of pointed stone. Top of pipe was directly over point of stone.
Found ring of smaller stones around pointed stone. Top of pointed stone is 2' below grade.

RATIFIED
BY KALAMAZOO COUNTY
REMONUMENTATION
PEER GROUP
2-19-1998

C. Description of monument for corner and accessories established to perpetuate locating the position of the corner:

Found pointed stone is accepted as the best available evidence of the position of the original corner. Left corner stone in place and planted 2' of Harrison Monument over point of stone, Accessories:

- Nail in East side 20" Oak N. 05° E. 12.70'
- Nail in Northerly side 20" Oak N. 80° E. 17.62'
- Nail in East side 15" Oak S. 10° E. 27.45'
- Nail in Southerly side 23" Oak N. 05° W. 2.30'



Signed by

Allen H. McMachen

Date

2/24/98

Surveyor's Michigan License No.

16935