



LC-000015  
Page: 1 of 1  
07/30/1999 03:36P  
Bk-2 Pg-468

LAND CORNER RECORDATION CERTIFICATE  
Filing Requirement of Act 74, Mich. P.A. 1970

For corners in Oshtemo Twp.

SURVEY &  
REMONUMENTATION

FEB 08 2000

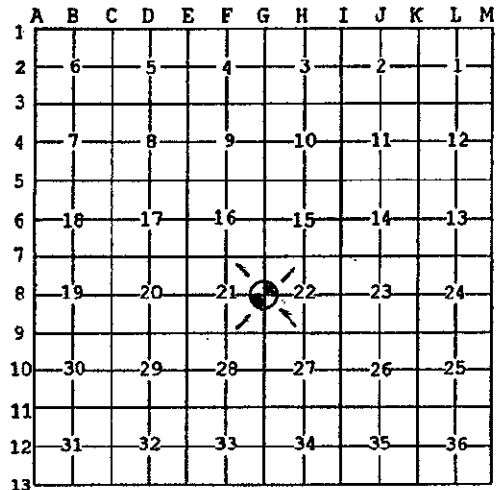
SECTION

Register of Deeds Stamp & File Number

<u>Kalamazoo</u> (County)	Located in:	Corner Code #
1. Public Land Survey	T 2 S R 12 W	G-08
	T R	
	T R	
	T R	
2. Property Controlling in Section	S T R	
	S T R	
3. Miscellaneous Property in Sec.	S T R	
	S T R	
4. Lot No. _____, Recorded Plat _____		
5. Private Claims		

I, Robert E. Snell, in a field survey on June 6, 1999 do hereby state that under requirements of P.A. 74, Michigan P.A. of 1970, the corner points mentioned in lines 1 and 2 above were in conformance with regulations and rules therefore as required in the current manual of survey instructions of the United States Department of the Interior, Bureau of Land Management or by a decree of a Court of Law and/or that the corner points mentioned in lines 3, 4 and 5 above were in conformance with the rules of the Michigan Board of Land Surveyors or by a Decree of a Court of Law; established, re-established, monumented, recovered, found as expressed below:

NOTE: Not more than 2 corners, all in the same town and range, may be recorded on this certificate.



A. Description of original monument and accessories and/or subsequent restoration:

- 1829: United States Government Surveyors, G. Harrison; set 1/4 Section post. Hickory 5" S. 80° W. 60 lks. White Oak 6" N. 28° E. 89 lks.
- 1864: F. Stimson, County Surveyor; stake, White Oak 16" N. 3 1/4° E. 61 1/2 lks., post of board fence 2 rods South.
- 1882: E. Strong, County Surveyor; found stake, set stone.
- 1891: E. Strong, County Surveyor; set new stone. Marked Yellow Oak 18" N. 29 1/4° E. 42 1/2 lks.

B. Description of corner evidence found and/or method applied in restoring or reestablishing corner:

- 1905: E. Strong County Surveyor; shows East 1/4 post - no description.
- 1966: Wilkins & Wheaton Engr. Co.; found stone placed R.R. spike - no witnesses.
- 1988: J. Hunt, RLS #23513; LCRC L-1, P-888, R.R. spike in monument box 0.5' North of center line road, North 57.8' PK Nail in East face of Pole, N. 40° W. 36.32' PK Nail in East face of 20" Oak, S. 65° W. 64.3' PK Nail in North face of 20" Hickory
- 1999: Found stone (7" x 7" x 10") pyramid shaped stone with drill mark 2 ft. below surface of road with R.R. spike in monument box and PK Nail above. PK Nail 0.14' South & 0.02' East of position of stone, R.R. spike 0.15' South of stone.

C. Description of monument for corner and accessories established to perpetuate locating the position of the corner:

G-08: East 1/4 post, Section 21, T. 2 S., R. 12 W., ratified by the Kalamazoo County Remonumentation Program Peer Group on July 15, 1999 and is accepted as the best available evidence of the position of the original corner. Found 7" x 7" x 10" stone 2 ft. below surface of road and R.R. spike in monument box and PK above. Stone was set by E. Strong, County Surveyor, in 1891 survey. Placed 20" Harrison monument over stone in monument box.

PK Nail in East side	15" Sassafras	N. 18° E.	36.32'
PK Nail in South side	Fence Post	N. 50° E.	50.22'
PK Nail in East side	12" Maple	S. 08° E.	25.22'
PK Nail in East side (over Nail/Tab)	24" Oak	N. 40° W.	36.23'

Signed by Robert E. Snell  
Surveyor's Michigan License No. 9734

Date 7-30-99

RATIFIED  
BY KALAMAZOO COUNTY  
REMONUMENTATION  
PEER GROUP  
7-15-1999