



LC-000079
Page: 1 of 1
12/17/1999 02:03P
Bk-2 Pg-532

LAND CORNER RECORDATION CERTIFICATE
Filing Requirement of Act 74, Mich. P.A. 1970

For corners in Oshtemo Twp.

Form with fields: Kalamazoo (County), Located in: T 2 S R 12 W, Corner Code #: K-08. Includes sections for Public Land Survey, Property Controlling in Section, Miscellaneous Property in Sec., Lot No., and Recorded Plat.

SURVEY & REMONUMENTATION

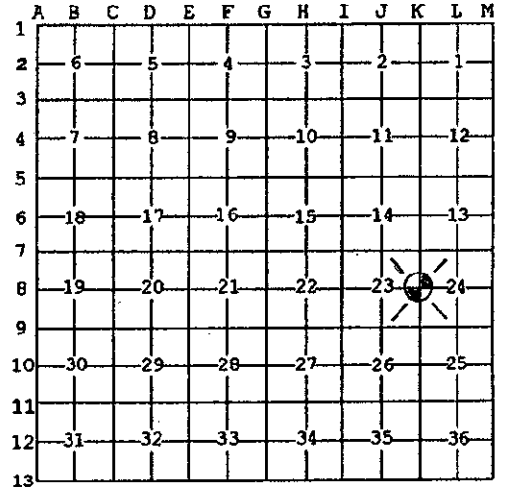
FEB 08 2000

SECTION

Register of Deeds Stamp & File Number

I, Robert E. Snell, in a field survey on May 12, 1999 do hereby state that under requirements of P.A. 74, Michigan P.A. of 1970, the corner points mentioned in lines 1 and 2 above were in conformance with regulations and rules therefore as required in the current manual of survey instructions of the United States Department of the Interior, Bureau of Land Management or by a decree of a Court of Law and/or that the corner points mentioned in lines 3, 4 and 5 above were in conformance with the rules of the Michigan Board of Land Surveyors or by a Decree of a Court of Law; established, re-established, monumented, recovered, found as expressed below:

NOTE: Not more than 2 corners, all in the same town and range, may be recorded on this certificate.



A. Description of original monument and accessories and/or subsequent restoration:

- 1829: United States Government Surveyor's, G. Harrison; set 1/4 Section post. White Oak 22" N. 61° W. 224 lks. White Oak 4" S. 35° W. 257 lks.
1873: E. Strong, County Survey; W. Oak 12" S. 41 1/2° e. 59 lks. And stone. 1 U.S. standing.

B. Description of corner evidence found and/or method applied in restoring or reestablishing corner:

- 1977: R. Lester, RLS #18998; LCRC L-1, P-758, found 3/4" bar. S. 70° W. 77.70' Found Nail/Tag in North Side 40" Oak. S. 15° W. 39.00' Set Nail & Tag in East Side 12" Oak. North 39.89' Set Nail & Tag in West Side Twin 20" Oak.
1980: A. McMachen, RLS #16935; L-1, P-853, iron rod. 36" Oak S. 65° W. 76.99'. 24" Oak S. 65° E. 82.80'. Fence Corner N. 10° E. 27.16'.
1989: T. Chettleburgh, RLS #16036; bolt, Concrete Monument N. 04° E. 32.93' - Twin 20" Oak N. 12° E. 40.10' - 41" Oak S. 60° E. 83.90' - 16" Oak S. 24° W. 39.18' - 50" Oak S. 64° W. 76.87' - 13" W. Cherry N. 66° W. 76.43' - Center line 28' Bit. Pavement South 3.5'.
1999: Found bolt at surface 2 irons below bolt and large green stone. Stone 3' deep and 4.0' North of traveled center line "KL" Avenue. Surface marker is 1± East of stone.

C. Description of monument for corner and accessories established to perpetuate locating the position of the corner:

- K-08: East 1/4 post, Section 23, T. 2 S., R. 12 W., ratified by the Kalamazoo County Remonumentation Program Peer Group on September 9, 1999 and is accepted as a careful and faithful perpetuation of the position of the original corner. Found large stone set by E. Strong, County Surveyor, in 1873 survey, verified by one U.S. Witness. Stone removed during sewer construction. Placed 30" Harrison monument in monument box after road reconstruction.
PK Nail in North Side 18" Oak S. 22° W. 38.17'
PK Nail in West Side 30" Double Oak N. 22° E. 40.12'
PK Nail in North Side 51" Oak S. 50° W. 76.88'
Old Nail in North Side 42" Oak S. 64° E. 83.20'

Signed by Robert E. Snell Date 12/16/99
Surveyor's Michigan License No. 9734

RATIFIED BY KALAMAZOO COUNTY REMONUMENTATION PEER GROUP 9/9/99