

**SURVEY & REMONUMENTATION**

FEB 26 1998

LIBER 2 PAGE 243

1- SECTION  
2-

**LAND CORNER RECORDATION CERTIFICATE**  
Filing Requirement of Act 74, Mich. P.A. 1970

For corners in Climax Township

<u>Kalamazoo</u> (County)	Located In:	Corner Code #
1. Public Land Survey	T 3S R 9W	C-05
	T R	
	T R	
	T R	
2. Property Controlling in Section	S T R	
	S T R	
3. Miscellaneous Property in Sec.	S T R	
	S T R	

STATE OF MICHIGAN  
COUNTY OF KALAMAZOO  
RECEIVED FOR RECORD  
97 DEC 17 AM 9 30  
Clerk - Register  
*Janice Johnson*

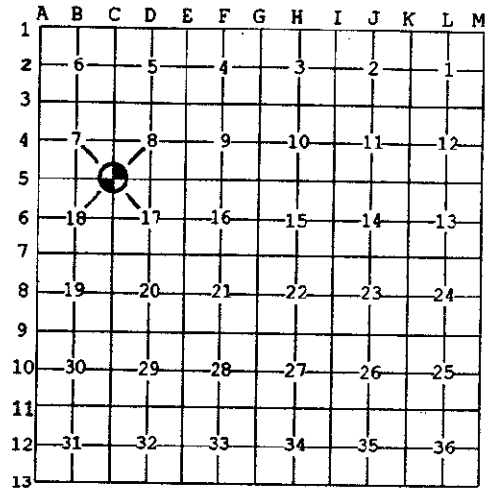
Register of Deeds Stamp & File Number

4. Lot No. \_\_\_\_\_, Recorded Plat \_\_\_\_\_  
5. Private Claims \_\_\_\_\_

I, Robert E. Snell, in a field survey on August 13, 1997 do hereby state that under requirements of P.A. 74, Michigan P.A. of 1970, the corner points mentioned in lines 1 and 2 above were in conformance with regulations and rules therefore as required in the current manual of survey instructions of the United States Department of the Interior, Bureau of Land Management or by a decree of a Court of Law and/or that the corner points mentioned in lines 3, 4 and 5 above were in conformance with the rules of the Michigan Board of Land Surveyors or by a Decree of a Court of Law, established, re-established, monumented, recovered, found as expressed below.

NOTE: Not more than 2 corners, all in the same town and range, may be recorded on this certificate.

**RATIFIED**  
**BY KALAMAZOO COUNTY**  
**REMONUMENTATION**  
**PEER GROUP**



A. Description of original monument and accessories and/or subsequent restoration.

1826: United States Government Surveyors: Set post, corner to Sections 7, 8, 17, and 18.  
White Oak 18", N. 10° E., 66 lks.  
White Oak 16", S. 13½° E., 45 lks.

1871: Samuel Hodgman, Deputy County Surveyor: Set stake for corner, Section 18 and 7.

1893: F. Hodgman, County Surveyor: "Found corner of resurvey set by me from stump of one U.S. Bearing Tree and original stake, bored 3' at corner, filled the bottom with broken brick and put 1 ft. earthen post over, four in. below surface of road, with stone around it. Noted Yellow Oak 12" dia. N.49°E., 84 lks., foundation wall N.E. corner of house, N.80°W., 126 lks.

B. Description of corner evidence found and/or method applied in restoring or reestablishing corner.

1984: Wilkins & Wheaton Engineering Co.; Found pieces of broken brick in a column from 2'-2½' below surface. No stone or tile found. Noted N.E. corner of house foundation in disrepair about 83' (+) (126 lks.) from pieces of brick. Placed 3/4" x 20" tapered iron in monument box.

Apple 18"	N. 40° E.	65.95'
Oak 10"	N. 53° E.	56.70'
Telephone Pole	S. 15° E.	54.00'

1997: Found 3/4" tapered iron in monument box with pieces of brick around. Monument box was 4" below road surface.

C. Description of monument for corner and accessories established to perpetuate locating the position of the corner:

C-05: Southeast corner, Section 7, T. 3 S., R. 9 W., ratified by the Kalamazoo County Remonumentation Program Peer Group on September 18, 1997, and is accepted as a careful and faithful perpetuation of the position of the original corner. Found 3/4" x 20" tapered iron with brick around. Brick being evidence of corner set in 1883 by F. Hodgman, County Surveyor. Placed 20" Harrison monument in place of iron with monument box over.

P.K. nail in West side	Wooden Fence Corner	N. 40° E.	56.43'
P.K. nail in South side	22" Oak	N. 64° E.	56.60'
Exist nail/tab in East side	Sawed off Telephone Pole	S. 28° E.	54.05'
Exist nail/tab in North side,	11" Triple Maple	N. 58° W.	38.35'

Signed by *Robert E. Snell*  
Surveyor's Michigan License No. 9734

Date 12-16-97