

**SURVEY &  
REMONUMENTATION**

SEP 14 1998

**LAND CORNER RECORDATION CERTIFICATE**  
Filing Requirement of Act 74, Mich. P.A. 1970

SECTION  
For corners in Climax Twp.

Kalamazoo (County)	Located In:	Corner Code #
1. Public Land Survey	T 3S R 9W	K-11
	T ___ R ___	_____
	T ___ R ___	_____
	T ___ R ___	_____
2. Property Controlling in Section	S ___ T ___ R ___	_____
	S ___ T ___ R ___	_____
3. Miscellaneous Property in Sec.	S ___ T ___ R ___	_____
	S ___ T ___ R ___	_____

Filed for Record in  
KALAMAZOO COUNTY, MI  
TIMOTHY A SNOW  
On 05-08-1998 At 11:12:34 am.  
LAND CORNER 9.00  
OR Liber 2 Page 303 - 303

Instrument Liber Page  
0 OR 2 303

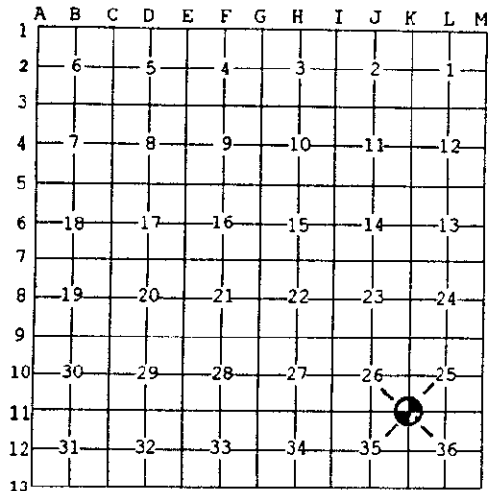
Register of Deeds Stamp & File Number

4. Lot No. \_\_\_\_\_, Recorded Plat \_\_\_\_\_  
5. Private Claims \_\_\_\_\_

I, Robert E. Snell, in a field survey on Feb. 5, 1998 do hereby state that under requirements of P.A. 74, Michigan P.A. of 1970, the corner points mentioned in lines 1 and 2 above were in conformance with regulations and rules therefore as required in the current manual of survey instructions of the United States Department of the Interior, Bureau of Land Management or by a decree of a Court of Law and/or that the corner points mentioned in lines 3, 4 and 5 above were in conformance with the rules of the Michigan Board of Land Surveyors or by a Decree of a Court of Law; established, re-established, monumented, recovered, found as expressed below:

NOTE: Not more than 2 corners, all in the same town and range, may be recorded on this certificate.

**RATIFIED**  
**BY KALAMAZOO COUNTY**  
**REMONUMENTATION**  
**PEER GROUP** 2-14-1998



**A. Description of original monument and accessories and/or subsequent restoration:**

- 1826: United States Government Surveyors; set post, corner to Sections 25, 26, 35 & 36. Beech 10" S. 69° E. 28 lks. Sugar 13" N. 79° W. 21½ lks.
- 1869: F. Hodgman, County Surveyor; "Section corner lost. Established on a right line between the quarter post East and West of it at proportional distance from each set a large stone with stake under for corner. From which the NW. corner of schoolhouse bears S. 48°-45' E. 110 lks, Apple 6" N. 43°-25' W. 97 lks."
- 1883: F. Hodgman, County Surveyor; "Found stone and witness trees of former survey, good. Planted a 3 foot column of 1 ft. brick with 2' earthen post over and stones around, 2" below surface of road corrected bearings, NW cor. of schoolhouse S. 43° E., Apple 6" N. 48½° W.

**B. Description of corner evidence found and/or method applied in restoring or reestablishing corner:**

- 1977: Wilkins & Wheaton Engr. Co.; found tile.
  - 36" Maple S. 05° W. 39.0'
  - 18" Walnut N. 50° E. 81.0'
  - 40" Maple N. 30° W. 107.5'
- 1998: Found 3" round tile in bituminous paving, leaning to East. Dug to where tile was broken off (8"-9") below top. Bottom of tile was wedged between 3 large stones. Placed remonumentation sleeve over broken tile and set it in concrete in monument box. Noted: NW corner of House (old School House) S. 40° E. 73.40' (Hodgman 110 lks. = 72.60') 36"+ Maple S. 05° W. 39' and 40" Maple N. 30° W. 107.5'.

**C. Description of monument for corner and accessories established to perpetuate locating the position of the corner:**

K-11: Northeast corner, Section 35, T. 3 S., R. 9 W., ratified by the Kalamazoo County Remonumentation Program Peer Group on February 19, 1998 and is accepted as a careful and faithful perpetuation of the position of the original corner. Found 3" round tile in bituminous pavement. Set remonumentation sleeve over tile with monument box over, set in concrete.

PK Nail in East Side	24" Walnut	N. 58° E.	80.68'
PK Nail in West Side	7" Maple	S. 08° E.	67.26'
PK Nail in East Side	8" Walnut	S. 54° W.	40.80'
PK Nail in South Side	14" Wild Cherry	N. 38° W.	66.27'

Signed by Robert E. Snell  
Surveyor's Michigan License No. 9734

Date 4-30-98