

FEB 18 1994

LIBER

1 PL 1077

COMMISSION

LAND CORNER RECORDATION CERTIFICATE
Filing Requirement of Act 74, Mich. P.A. 1970

For corners in PAVILION TWP.

KALAMAZOO
(County)

Located In:

Corner Code #

- 1. Public Land Survey T 3S R 10W E-5
- T _____ R _____
- T _____ R _____
- T _____ R _____
- 2. Property Controlling S _____ T _____ R _____
- in Section S _____ T _____ R _____
- 3. Miscellaneous S _____ T _____ R _____
- Property in Sec. S _____ T _____ R _____

4. Lot No. _____, Recorded Plat _____

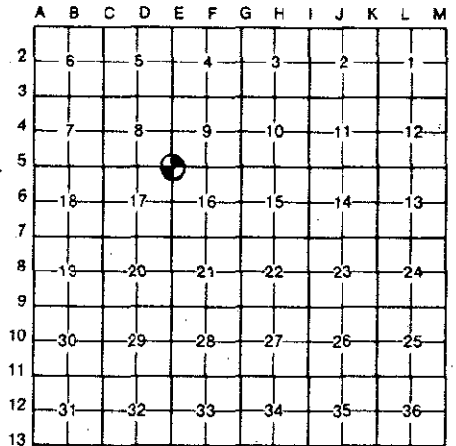
5. Private Claims _____

STATE OF MICHIGAN
COUNTY OF KALAMAZOO
RECEIVED FOR RECORD
94 JUN 20 PM 3 09
CLERK-REGISTER

Register of Deeds Stamp & File Number

I, Allen H. McMachen a field survey on December 4, 19 93, do hereby certify that under requirements of P.A. 74, Michigan P.A. of 1970, the corner points mentioned in lines 1 and 2 above were in conformance with regulations and rules therefore as required in the current manual of survey instructions of the United States Department of the Interior, Bureau of Land Management or by a decree of a Court of Law and/or that the corner points mentioned in lines 3, 4 and 5 above were in conformance with the rules of the Michigan Board of Land Surveyors or by a Decree of a Court of Law; established, re-established, monumented, re-monumented, recovered, found as expressed below:

NOTE: Not more than 4 corners, all in the same town and range, may be recorded on this certificate.



A. Description of original monument and accessories and/or subsequent restoration:

1888 - F. Hodgeman C.S. placed Clay Tile post during official Township Remonumentation.

B. Description of corner evidence found and/or method applied in restoring or reestablishing corner:

Found Clay Tile 2' deep.

RATIFIED
BY KALAMAZOO COUNTY
REMONUMENTATION
PEER GROUP
12-16-93



C. Description of monument for corner and accessories established to perpetuate locating the position of the corner:

Found Clay Tile is accepted as a careful and faithful perpetuation of the original corner. Placed Harrison Monument over existing Tile, accessories:

- Nail on West face 12" Oak N. 24 deg. W. 58.65'
- Nail on North face 12" Oak WEST 35.62'
- Nail on East face 6" Cherry S. 60 deg. W. 9.47'
- PK Nail on East face Railroad Tie fence post NORTH 2.15'

Signed by Allen H. McMachen

Date 1/19/94

Surveyor's Michigan License No. 16935