

**SURVEY & REMONUMENTATION**

FEB 26 1998

LIBER 2 PAGE 261

7,  
2- SECTION  
Pavilion Twp.  
For corners in Kalamazoo  
(County)

**LAND CORNER RECORDATION CERTIFICATE**  
Filing Requirement of Act 74, Mich. P.A. 1970

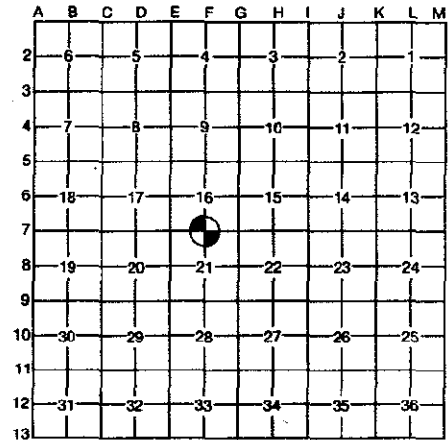
Located In: Corner Code #

1. Public Land Survey	T	3S.	R	10W.	F-7
	T		R		
	T		R		
	T		R		
2. Property Controlling in Section	S		T	R	
	S		T	R	
3. Miscellaneous Property in Section	S		T	R	
	S		T	R	

STATE OF MICHIGAN  
COUNTY OF KALAMAZOO  
RECEIVED FOR RECORD  
'97 DEC 22 PM 3 49  
Clerk - Register  
*Janice L. Johnson*

Register of Deeds Stamp & File Number

4. Lot No. \_\_\_\_\_, Recorded Plat \_\_\_\_\_  
5. Private Claims \_\_\_\_\_



I, Allen H. McMachen, in a field survey on November 11, 1997, do hereby certify that under requirements of P.A. 74, Michigan P.A. of 1970, the corner points mentioned in lines 1 and 2 above were in conformance with regulations and rules therefore as required in the current manual of survey instructions of the United States Department of the Interior, Bureau of Land Management or by a decree of a Court of Law and/or that the corner points mentioned in lines 3, 4 and 5 above were in conformance with the rules of the Michigan Board of Professional Surveyors or by a Decree of a Court of Law; established, re-established, monumented, re-monumented, recovered, found as expressed below:

**NOTE: Not more than 4 corners, all in the same town and range, may be recorded on this certificate.**

**A. Description of original monument and accessories and/or subsequent restoration:**

1827 - Robert Clark, Jr., D.S.  
Set quarter Section post, Wh. Oak 16" S. 47½° E. 103 lks., Wh. Oak 24" N. 82° W. 49 lks.  
1874 - F. Hodgman, Surveyor, "Set stone 24" long from one standing witness.

1888 - F. Hodgman, C.S.  
"Found stone 2' long set S. 82° E. 49 lks. from stump of bearing tree. Set post." "Apple 3" N. 27° W. 79 lks.."

**B. Description of corner evidence found and/or method applied in restoring or reestablishing corner:**

Found iron rod in monument box. Removed iron and box and found clay tile directly under surface iron position.

**RATIFIED BY KALAMAZOO COUNTY REMONUMENTATION PEER GROUP**  
12-13-1997  
*R. G.*

**C. Description of monument for corner and accessories established to perpetuate locating the position of the corner:**

Found clay tile is accepted a careful and faithful perpetuation of the position of the original corner. Placed Standard Sleeve over found clay tile with monument box over, Accessories:

Nail in Northeast side of P. Pole S. 25° E. 67.7'  
Nail in Southeast side 30" Maple S. 35° W. 73.0'  
Iron rod placed N. 45° W. 21.2'  
Iron rod placed N. 55° E. 63.3'



Signed by *Allen H. McMachen*  
Surveyor's Michigan License No. 16935

Date 12/22/97