

LAND CORNER RECORDATION CERTIFICATE
Filing Requirement of Act 74, Mich. P.A. 1970

STATE OF MICHIGAN
 COUNTY OF KALAMAZOO
 RECEIVED FOR RECORD

'95 AUG 31 AM 11 25

Jeanne Jaeger
 CLERK-REGISTER

LIBER 1 ■ 1346

Register of Deeds Stamp & File Number

For corners in KALAMAZOO Located In: _____ Corner Code # _____
 (County)

PAVILION TWP.

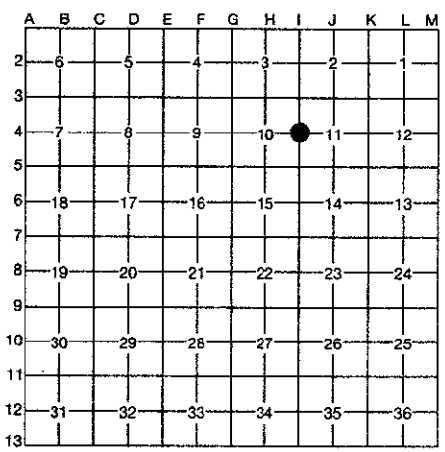
1. Public Land Survey T 3 R 10 I4
 T _____ R _____
 T _____ R _____
 T _____ R _____

2. Property Controlling S _____ T _____ R _____
 in Section S _____ T _____ R _____

3. Miscellaneous S _____ T _____ R _____
 Property in Section S _____ T _____ R _____

4. Lot No. _____, Recorded Plat _____

5. Private Claims _____



I, GARY D. HAHN, in a field survey on JANUARY 17, 19 95, do hereby certify that under requirements of P.A. 74, Michigan P.A. of 1970, the corner points mentioned in lines 1 and 2 above were in conformance with regulations and rules therefore as required in the current manual of survey instructions of the United States Department of the Interior, Bureau of Land Management or by a decree of a Court of Law and/or that the corner points mentioned in lines 3, 4 and 5 above were in conformance with the rules of the Michigan Board of Professional Surveyors or by a Decree of a Court of Law; established, re-established, monumented, re-monumented, recovered, found as expressed below:

NOTE: Not more than 4 corners, all in the same town and range, may be recorded on this certificate.

A. Description of original monument and accessories and/or subsequent restoration:

1827 Quarter section corner established by U.S. Deputy Surveyor Robert Clark, Jr.
 Accessories: Y. Oak 12 in N82°W 1154 lks.
 Y. Oak 18 in N70°E 1183 lks.

Date ? KCRC notes show Hodgman either found or set the location of this corner in a creek bottom by bisecting the NW. and SW. corners of section 11.

B. Description of corner evidence found and/or method applied in restoring or reestablishing corner:

Original corner and accessories not recovered.

Found nothing at above described bisection. Bisection falls in center of a county drain that was dredged in the 1940's.

Set a 1/2" dia. 24' long rebar and cap (LLS 38116) in center of county drain at the bisection of the line between the NW. and SW. corners of Section 11.

RATIFIED
BY KALAMAZOO COUNTY
REMONUMENTATION
PEER GROUP
 6-15-95

C. Description of monument for corner and accessories established to perpetuate locating the position of the corner:
 I4, West quarter corner of Section 11, T3S, R10W, Ratified by Kalamazoo County Remonumentation Peer Group on June 15, 1995. Location of the 1/2" dia. rebar is accepted as a careful and faithful reestablishment of the position of the original corner. Removed rebar and set a 30" Harrison Monument in it's place.

- Set P.K. nail in 10" Walnut S37°E 23.90'
- Set P.K. nail in 17" Walnut S65°W 17.03'
- Set P.K. nail in 24" Elm N58°E 19.21'
- Set P.K. nail in 20" Elm N26°W 33.28'



Signed by *Gary D. Hahn*

Date 8-29-95

Surveyor's Michigan License No. 38116