

AUG 06 1996

COMMISSION

LIBER

2 PAGE 039

LAND CORNER RECORDATION CERTIFICATE
Filing Requirement of Act 74, Mich. P.A. 1970

For corners in City of Portage
Kalamazoo
(County)

Located In:

Corner Code #

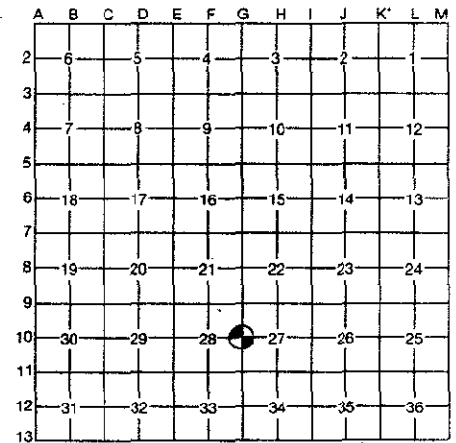
1. Public Land Survey	T	<u>3S.</u>	R	<u>11W.</u>	<u>G-10</u>
	T		R		
	T		R		
	T		R		
2. Property Controlling in Section	S		T	R	
	S		T	R	
3. Miscellaneous	S		T	R	
Property in Section	S		T	R	

STATE OF MICHIGAN
COUNTY OF KALAMAZOO
RECEIVED FOR RECORD
1996 AUG 1 PM 3 11
Clerk - Register
[Signature]

Register of Deeds Stamp & File Number

- 4. Lot No. _____, Recorded Plat _____
- 5. Private Claims _____
- 6. IWM Job No. 29152

I, Allen H. McMachen, in a field survey on May 29, 19 96, do hereby certify that under requirements of P.A. 74, Michigan P.A. of 1970, the corner points mentioned in lines 1 and 2 above were in conformance with regulations and rules therefore as required in the current manual of survey instructions of the United States Department of the Interior, Bureau of Land Management or by a decree of a Court of Law and/or that the corner points mentioned in lines 3, 4 and 5 above were in conformance with the rules of the Michigan Board of Professional Surveyors or by a Decree of a Court of Law; established, re-established, monumented, re-monumented, recovered, found as expressed below:



NOTE: Not more than 4 corners, all in the same town and range, may be recorded on this certificate.

A. Description of original monument and accessories and/or subsequent restoration:

- 1827 - Robert Clark, Jr., Dep. Surveyor
Set 1/4 Section post
W. Oak 8 S. 30° E. 30 lks.
W. Oak 9 N. 27° E. 51 lks.
- ±1970 - Sewer construction removed corner (±22' deep)

B. Description of corner evidence found and/or method applied in restoring or reestablishing corner:

Found 5/8" iron

RATIFIED
BY KALAMAZOO COUNTY
REMONUMENTATION
PEER GROUP
6-20-1996
[Signature]

C. Description of monument for corner and accessories established to perpetuate locating the position of the corner:

Found 5/8" iron rod was accepted as the best available evidence of the position of the original corner. Placed Harrison Monument in place of 5/8" iron with mon. box over, Accessories:

- "PK" Nail in 20" Hickory N. 30° E. 60.15'
- Concrete monument East 33.07'
- "PK" Nail in 15" Hickory S. 60° W. 31.46'
- Top center of Hydrant S. 25° W. 63.66'
- "PK" Nail & Tab in guy pole S. 89° W. 30.05'



Signed by *[Signature]*
Surveyor's Michigan License No. 16935

Date 8/1/96