

APR 6 1 1996

COMMISSION

LAND CORNER RECORDATION CERTIFICATE
Filing Requirement of Act 74, Mich. P.A. 1970

STATE OF MICHIGAN
COUNTY OF KALAMAZOO
RECEIVED FOR RECORD

'95 DEC 8 AM 10 55

For corners in
KALAMAZOO
(County)

Located In:

Corner Code #

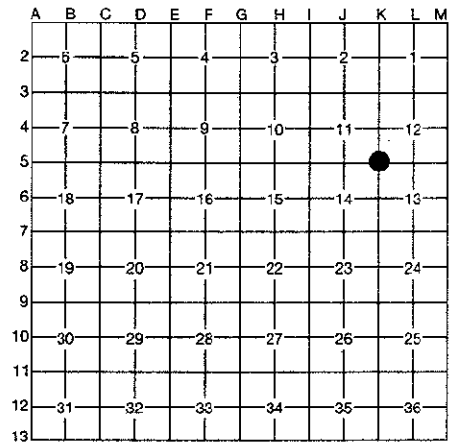
CITY OF PORTAGE

1. Public Land Survey	T	<u>3S</u>	R	<u>11W</u>	<u>K5</u>	
	T	_____	R	_____	_____	
	T	_____	R	_____	_____	
	T	_____	R	_____	_____	
2. Property Controlling in Section	S	_____	T	_____	R	_____
	S	_____	T	_____	R	_____
3. Miscellaneous Property in Section	S	_____	T	_____	R	_____
	S	_____	T	_____	R	_____

James D. Young
CLERK-REGISTER

LIBER **1 1403**
Register of Deeds Stamp & File Number

- 4. Lot No. _____, Recorded Plat _____
- 5. Private Claims _____



I, Gary D. Hahn, in a field survey on July 24, 1995, do hereby certify that under requirements of P.A. 74, Michigan P.A. of 1970, the corner points mentioned in lines 1 and 2 above were in conformance with regulations and rules therefore as required in the current manual of survey instructions of the United States Department of the Interior, Bureau of Land Management or by a decree of a Court of Law and/or that the corner points mentioned in lines 3, 4 and 5 above were in conformance with the rules of the Michigan Board of Professional Surveyors or by a Decree of a Court of Law; established, re-established, monumented, re-monumented, recovered, found as expressed below:

NOTE: Not more than 4 corners, all in the same town and range, may be recorded on this certificate.

A. Description of original monument and accessories and/or subsequent restoration:

- 1827 Corner post established by U.S. Deputy Surveyor Robert Clark, Jr.
Accessories: W. Oak 18" S62W 24½k. W. Oak 10" N33E 381k.
- 1888 E. Strong Dep. Co. Sur. Field notes (V1, P423) give distance between S¼ post sec. 11 & SE. Cor. sec. 11 as 40.18ch. (2651.88')
- 1960 Wilkins & Wheaton Eng., Co. Survey for UpjohnCo. gives chained distance of 2651.68' between S¼ post and SE. Cor. sec. 11.
- 1964 Wilkins & Wheaton Eng., Co. "Map showing location & elevations of monuments at the Upjohn Co." This map shows that monuments in the area are "brass cap set in a 5' column of concrete & encased in a monument box for preservation." This map does not show the S¼ post of sec. 11 but is evidence that fnd. mon. was set by Wilkins & Wheaton.

B. Description of corner evidence found and/or method applied in restoring or reestablishing corner:

Original monument and accessories not recovered.
Found 0.25' dia. brass cap on concrete base in monument box. Cap was stamped:
0+00
26+51.57 E
BM 870.12

Cap was set on a 1/2" rebar in the center of a 1/5' dia. x 4.5' long concrete base.
Measured distance between brass cap and S¼ post sec. 11 = 2651.51'

Found no other corner evidence beneath or around concrete monument.

RATIFIED
BY KALAMAZOO COUNTY
REMONUMENTATION
PEER GROUP

C. Description of monument for corner and accessories established to perpetuate locating the position of the corner: 9-21-95

K5, Southeast corner section 11, T3S, R11W, Ratified by Kalamazoo County Remonumentation Peer Group on September 21, 1995. The location of the brass cap is accepted as the best available evidence of the position of the corner. Removed brass cap and concrete base and replaced with a 30" Harrison Monument in a monument box.

- Set P.K. nail in P.P. S40°E 78.36'
- Top of fire hydrant N37°E 54.10'
- SW. Cor. of sanitary lift station fence enclosure N39°W 71.31'
- Center of concrete light pole S48°W 78.06'



Signed by *Gary D. Hahn*
Surveyor's Michigan License No. 38116

Date December 1, 1995