

SURVEY & REMONUMENTATION

APR 27 1995

COMMISSION

LIBER 1 PG 1159

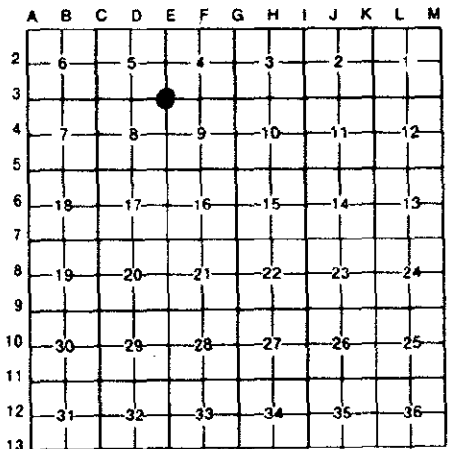
LAND CORNER RECORDATION CERTIFICATE
 Filing Requirement of Act 74, Mich. P.A. 1970

For corners in

<u>Kalamazoo</u> <small>(County)</small>	Located In:	Corner Code #
Texas Township		
1. Public Land Survey	T <u>3S</u> R <u>12W</u>	<u>E-3</u>
	T _____ R _____	_____
	T _____ R _____	_____
	T _____ R _____	_____
2. Property Controlling in Section	S _____ T _____ R _____	_____
	S _____ T _____ R _____	_____
3. Miscellaneous Property in Sec.	S _____ T _____ R _____	_____
	S _____ T _____ R _____	_____
4. Lot No. _____, Recorded Plat _____		
5. Private Claims _____		

STATE OF MICHIGAN
 COUNTY OF KALAMAZOO
 RECEIVED FOR RECORD
 94 JUL 6 PM 11 52
 CLERK - REGISTER
 Register of Deeds Stamp & File Number

I, Thomas W. Chettleburgh, in a field survey on March 22, 19 94, do hereby certify that under requirements of P.A. 74, Michigan P.A. of 1970, the corner points mentioned in lines 1 and 2 above were in conformance with regulations and rules therefore as required in the current manual of survey instructions of the United States Department of the Interior, Bureau of Land Management or by a decree of a Court of Law and/or that the corner points mentioned in lines 3, 4 and 5 above were in conformance with the rules of the Michigan Board of Land Surveyors or by a Decree of a Court of Law, established, re-established, monumented, re-monumented, recovered, found as expressed below:



NOTE: Not more than 4 corners, all in the same town and range, may be recorded on this certificate.

A. Description of original monument and accessories and/or subsequent restoration:
 Corner Post set by U.S. Government Deputy Surveyor Thom Whelpley, 1829.
 Accessories: S38 1/2°W W.Oak 9" .18, N76°E W.Oak 4" .53.
 MDOT 1962, 1" Pinch Pipe.
 Accessories: 28" Maple N14°W 82.45', Power Pole S68°30'W 91.4'.
 Rahilly 1982, Found 3/4" iron pipe in monument box, recorded LCRC Liber 1, Page 857
 D. Erickson 1992, Found 3/4" iron pipe in monument box, recorded LCRC Liber 1, Page 975

B. Description of corner evidence found and/or method applied in restoring or reestablishing corner:
 Original Corner Post & Accessories not recovered.
 Found 3/4" X 28" iron pipe in monument box, in centerline of roads N,E,S,W, checks corner location as described by MDOT and as described and recorded by Rahilly and D. Erickson.
 The 3/4" X 28" iron pipe was accepted as a careful and faithful perpetuation of the position of the original corner and was ratified by the Kalamazoo County Remonumentation Program Peer Group on April 21, 1994.
 Replaced 3/4" X 28" iron pipe with 20" Harrison Monument.

RATIFIED
BY KALAMAZOO COUNTY
REMONUMENTATION
PEER GROUP
 4-21-94

C. Description of monument for corner and accessories established to perpetuate locating the position of the corner:
 20" Harrison Monument in monument box.

Spike	NW side	6" Oak	N37°E	71.32'
Spike	SW side	27" Oak	S26°E	91.39'
Spike	NW side	Power Pole	S71°W	91.30'
Spike	NE side	30" Maple	N11°W	81.07'



Signed by Thomas W. Chettleburgh Date July 5, 1994
 Surveyor's Michigan License No. 16036