

LAND CORNER RECORDATION CERTIFICATE
Filing Requirement of Act 74, Mich. P.A. 1970

STATE OF MICHIGAN
COUNTY OF KALAMAZOO
RECEIVED FOR RECORD

'98 OCT 20 AM 11 25

Smith Johnson
CLERK - REGISTER

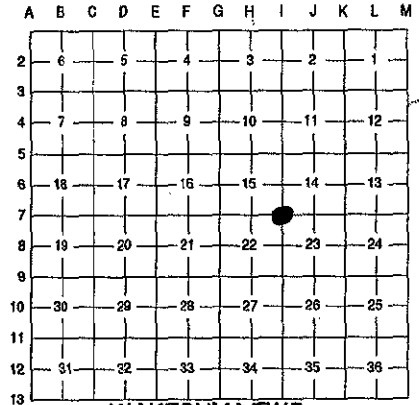
LIBER 2 PAGE 334

Register of Deeds Stamp & File Number

<u>KALAMAZOO</u> (County)	Located In:	Corner Code #
1. Public Land Survey	T 4S R 9W	I-7
	T R	
	T R	
	T R	
2. Property Controlling in Section	S T R	
	S T R	
3. Miscellaneous Property in Sec.	S T R	
	S T R	

4. Lot No. _____, Recorded Plat
5. Private Claims

I, WILLIAM K. CRANE, P.S., in a field survey on OCTOBER 1, 19 97 do hereby state that under requirements of P.A. 74, Michigan P.A. of 1970, the corner points mentioned in lines 1 and 2 above were in conformance with regulations and rules therefore as required in the current manual of survey instructions of the United States Department of the Interior, Bureau of Land Management or by a decree of a Court of Law and /or that the corner points mentioned in lines 3, 4 and 5 above were in conformance with the rules of the Michigan Board of Land Surveyors or by a Decree of a Court of Law; established, re-established, monumented, recovered, found as expressed below:



WAKESHMA TWP.

NOTE: Not more than 2 corners, all in the same town and range, may be recorded on this certificate.

A. Description of original monument and accessories and/or subsequent restoration:

G.L.O., MAY. 1826, R. CLARK Jr., D.S.:
8" SUGAR, N57°W, 14 LINKS
12" SUGAR, S.8°E, 22 LINKS

V.1:207, S. HODGEMAN (NO DATE):
"STONE BY NUTTING"

V.6:442, F. HODGEMAN (NO DATE OR SURVEYOR)
ST + S.45°W, 70-3/4 (S.50°W, 50 BY CHAIN)

B. Description of corner evidence found and/or method applied in restoring or reestablishing corner:

FOUND 1/2" PIPE IN MONUMENT BOX. REMOVED PIPE AND DUG APPROXIMATELY 2.5 FEET TO FIND LARGE STONE. RAISED STONE WITH HARRISON MARKER AND MONUMENT BOX.

**SURVEY &
REMONUMENTATION**

NOV 25 1998

SECTION

**RATIFIED
BY KALAMAZOO COUNTY
REMONUMENTATION
PEER GROUP**
3-19-1998
K.C.

C. Description of monument for corner and accessories established to perpetuate locating the position of the corner:

FOUND LARGE STONE IS ACCEPTED AS THE BEST AVAILABLE EVIDENCE OF THE POSITION OF THE ORIGINAL CORNER. RAISED STONE WITH HARRISON MARKER AND MONUMENT BOX.

2.5' SOUTH OF CENTERLINE OF EAST AND WEST ROAD
3' WEST OF CENTERLINE OF NORTH AND SOUTH ROAD
SET NAIL IN E. SIDE OF 36" MAPLE, N.14°W, 100.30'
SET NAIL IN E. SIDE OF 30" MAPLE, N.79°30'E, 164.72'
SET NAIL IN S.W. SIDE OF 36" MAPLE, S.38°E, 46.61'
SET NAIL IN E. SIDE OF 8" MAPLE, S.21°30'W, 79.37'

Signed by *William K. Crane*
William K. Crane, P.S.

Date 10/19/98

Surveyor's Michigan License No.: 29243

FORM APPROVED BY MICHIGAN STATE BOARD OF PROFESSIONAL SURVEYORS, JAN. 28, 1971

REVISED MAY 14, 1975
REVISED JAN., 1983
REVISED OCT., 1995

