

SURVEY & REMONUMENTATION

NOV 25 1998

SECTION

LAND CORNER RECORDATION CERTIFICATE
Filing Requirement of Act 74, Mich. P.A. 1970

For corners in Brady Twp.

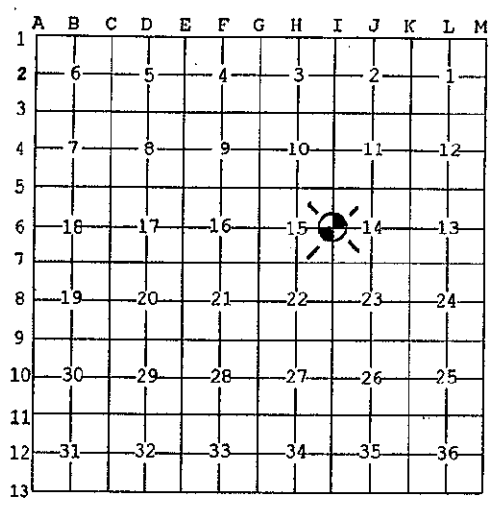
<u>Kalamazoo</u> (County)	Located In:	Corner Code #
1. Public Land Survey	T 4S R 10W	I-06
	T _____ R _____	_____
	T _____ R _____	_____
	T _____ R _____	_____
2. Property Controlling in Section	S _____ T _____ R _____	_____
	S _____ T _____ R _____	_____
3. Miscellaneous Property in Sec.	S _____ T _____ R _____	_____
	S _____ T _____ R _____	_____

LIBER PAGE 346
CLERK - REGISTER
98 OCT 22 AM 11 37
STATE OF MICHIGAN
COUNTY OF KALAMAZOO
RECEIVED FOR RECORD
Register of Deeds Stamp & File Number

4. Lot No. _____, Recorded Plat _____
5. Private Claims _____

I, Robert E. Snell, in a field survey on May 5, 1998 do hereby state that under requirements of P.A. 74, Michigan P.A. of 1970, the corner points mentioned in lines 1 and 2 above were in conformance with regulations and rules therefore as required in the current manual of survey instructions of the United States Department of the Interior, Bureau of Land Management or by a decree of a Court of Law and /or that the corner points mentioned in lines 3, 4 and 5 above were in conformance with the rules of the Michigan Board of Land Surveyors or by a Decree of a Court of Law; established, re-established, monumented, recovered, found as expressed below:

NOTE: Not more than 2 corners, all in the same town and range, may be recorded on this certificate.



A. Description of original monument and accessories and/or subsequent restoration:

1825: United States Government Surveyors; set 1/4 post.
Whitewood 18" S. 65° W. 29 lks.
Elm 10" N. 86° E. 20 lks.

RATIFIED
BY KALAMAZOO COUNTY
REMONUMENTATION
PEER GROUP
5-21-1998

B. Description of corner evidence found and/or method applied in restoring or reestablishing corner:

No Date: Wilkins & Wheaton Engr. Co.; witness notes call for post, no accessories.
1998: Found 1/2"x2' iron rod in monument box. Removed monument box and found large stone 2 ft. below surface. Stone 2 ft. long by 0.5' to 0.8' in diameter with 2" steel pipe 3 ft. long along west side of stone. 1/2"x2' iron rod was inside pipe.

C. Description of monument for corner and accessories established to perpetuate locating the position of the corner:

I-06: West 1/4 post, Section 14, T. 4 S., R. 10 W., ratified on May 21, 1998 by the Kalamazoo County Remonumentation Program Peer Group and is accepted as the best available evidence of the position of the original corner. Found 2 ft. long stone with 2 ft. iron in 3 ft. pipe along side in monument box. Stone was set by unknown surveyor. Placed 20" Harrison monument over stone in monument box.

Exist. Nail/Tab in North Side	Power Pole	N. 50° W.	26.50'
Exist. Nail/Tab in South Side	Power Pole	S. 70° E.	26.91'
PK Nail in West Side	14" Hickory	S. 20° E.	92.07'
PK Nail in North Side	6" Sassafras	S. 70° W.	30.24'

Signed by Robert E. Snell Date 10-22-98
Surveyor's Michigan License No. 9734