

1
2
AUG 22 1995

COMMISSION

STATE OF MICHIGAN
COUNTY OF KALAMAZOO
RECEIVED FOR RECORD

'95 FEB 9 PM 3 58

LAND CORNER RECORDATION CERTIFICATE

Filing Requirement of Act 74, Mich. P.A. 1970

For corners in SCHOOLCRAFT TWP.

KALAMAZOO

(County)

Located In:

Corner Code #

1. Public Land Survey	T	4	S	R	11	W	C-4
	T		R				
	T		R				
	T		R				
2. Property Controlling in Section	S		T		R		
	S		T		R		
3. Miscellaneous Property in Section	S		T		R		
	S		T		R		

Jennifer [Signature]

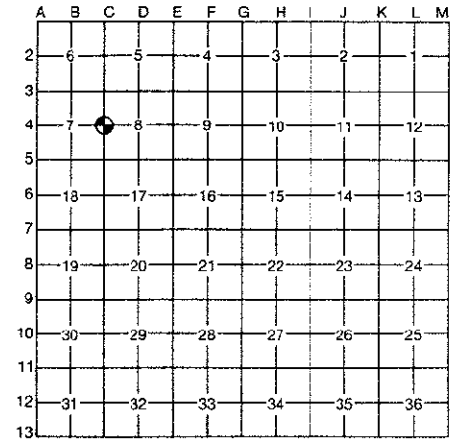
CLERK-REGISTER

LIBER 1 PC 1267

Register of Deeds Stamp & File Number

- 4. Lot No. _____, Recorded Plat _____
- 5. Private Claims _____

I, Allen H. McMachen a field surveyor on December 29, 19 94, do hereby certify that under requirements of P.A. 74, Michigan P.A. of 1970, the corner points mentioned in lines 1 and 2 above were in conformance with regulations and rules therefore as required in the current manual of survey instructions of the United States Department of the Interior, Bureau of Land Management or by a decree of a Court of Law and/or that the corner points mentioned in lines 3, 4 and 5 above were in conformance with the rules of the Michigan Board of Professional Surveyors or by a Decree of a Court of Law; established, re-established, monumented, re-monumented, recovered, found as expressed below:



NOTE: Not more than 4 corners, all in the same town and range, may be recorded on this certificate.

A. Description of original monument and accessories and/or subsequent restoration:

- 1826 - U.S. Government Surveyors set $\frac{1}{4}$ Section post in Prairie and raised mound.
- 1889 - F. Hodgeman, C.S., Lost, set post in line midway between section corners North & South
Elm 16" S. $8\frac{1}{2}^\circ$ W. 232 lks.
Maple 8" N. $26\frac{1}{2}^\circ$ W. 78 lks.

B. Description of corner evidence found and/or method applied in restoring or reestablishing corner:

Found Clay Tile 1.5' below surface.

RATIFIED
BY KALAMAZOO COUNTY
REMONUMENTATION
PEER GROUP
1/19/95
[Signature]

C. Description of monument for corner and accessories established to perpetuate locating the position of the corner:

Found Clay Tile is accepted as a careful and faithful perpetuation of the position of the original corner. Removed top section of Tile and placed Harrison monument over remaining bottom section of Tile and placed monument box over. Accessories:

- "PK" Nail in N. side of Utility Pole EAST 33.32'
- Nail & Tab in N. side 12" Oak S. 75° E. 32.90'
- Nail & Tab in E. side 14" Oak S. 15° W. 81.97'
- Nail & Tab in E. side 24" Oak S. 80° W. 35.33'

Signed by Allen H. McMachen
Surveyor's Michigan License No. 16935

Date 2/19/95

