

FEB 18 1994

LIBER

1 PG 1003

LAND CORNER RECORDATION CERTIFICATE
Filing Requirement of Act 74, Mich. P.A. 1970

COMMISSION

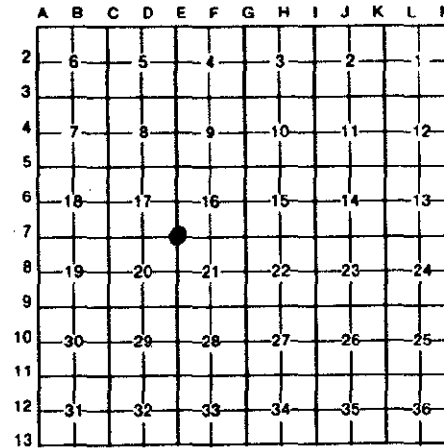
For corners in

Table with columns: Kalamazoo (County), Schoolcraft Township, Located In, Corner Code #. Includes entries for Public Land Survey and Property Controlling in Section.

STATE OF MICHIGAN COUNTY OF KALAMAZOO RECEIVED FOR RECORD 93 OCT 25 AM 9 38 Register of Deeds Stamp & File Number

- 4. Lot No. , Recorded Plat
5. Private Claims

I, John G. Kester, in a field survey on July 30, 1993, do hereby certify that under requirements of P.A. 74, Michigan P.A. of 1970, the corner points mentioned in lines 1 and 2 above were in conformance with regulations and rules therefore as required in the current manual of survey instructions of the United States Department of the Interior, Bureau of Land Management or by a decree of a Court of Law and/or that the corner points mentioned in lines 3, 4 and 5 above were in conformance with the rules of the Michigan Board of Land Surveyors or by a Decree of a Court of Law; established, re-established, monumented, re-monumented, recovered, found as expressed below:



NOTE: Not more than 4 corners, all in the same town and range, may be recorded on this certificate.

A. Description of original monument and accessories and/or subsequent restoration:

Corner Post established by U.S. Government Deputy Surveyor Robert Clark, 1826, Stake, Accessories: W. Oak 14 N27W 4.70, Hick 7 N54 1/2 W 1.89. Resurvey by F. Hodgeman, 1889, Found Stone said by residents to have been kept in place of original Corner. Set Post (Solid Clay Tile with "X" on top), Accessories: Maple 4" S45W 79 1/2 Lks, Maple 3" N19 1/2 E 87 1/2 Lks.

B. Description of corner evidence found and/or method applied in restoring or reestablishing corner:

Original Corner not recovered. Found Monument Box over 5/8" iron above Solid Clay Tile (top broken off) called for in 1889 resurvey by F. Hodgeman. Accessories for 5/8" iron, 18" Walnut S 27 W 82.63', 26" Maple N 41 W 52.16'. All other accessories gone.

RATIFIED BY KALAMAZOO COUNTY REMONUMENTATION PEER GROUP 8-19-93

C. Description of monument for corner and accessories established to perpetuate locating the position of the corner:

E-7, Section Corner 16, 17, 20 & 21, T4S - R11W, Ratified by Kalamazoo County Remonumentation Program Peer Group on August 19, 1993. Found Solid Clay Tile (top broken off) called for in 1889 resurvey and is accepted as a careful and faithful perpetuation of the position of the original Corner. Removed existing Monument Box and 5/8" iron. Placed 20" Harrison Monument above Tile and placed Monument Box over Corner.

- Set P.K. Nail in 36" Maple N 10 E 86.89'
Set P.K. Nail in 31" Maple N 40 W 52.62' (Existing)
Set P.K. Nail in 26" Walnut S 20 W 82.66" (Existing)
Set P.K. Nail in P.P. S 20 E 57.15'

Signed by [Signature] Date 10-20-93

Surveyor's Michigan License No. 16046
Kalamazoo County Road Commission